

TECHNICAL MANUAL

ORGANIZATIONAL, DIRECT SUPPORT, AND GENERAL SUPPORT  
MAINTENANCE REPAIR PARTS AND SPECIAL TOOLS LIST  
(INCLUDING DEPOT MAINTENANCE REPAIR PARTS AND SPECIAL TOOLS)  
FOR  
TEST SET, RADIO AN/GRM-114  
(NSN 6625-01-108-6206)



ORGANIZATIONAL, DIRECT SUPPORT, AND GENERAL SUPPORT  
 MAINTENANCE REPAIR PARTS AND SPECIAL TOOLS LIST  
 (INCLUDING DEPOT MAINTENANCE REPAIR PARTS AND SPECIAL TOOLS)  
 FOR  
 TEST SET, RADIO AN/GRM-114  
 (NSN 6625-01-108-6206)  
 Current as of 24 November 1982

**REPORTING ERRORS AND RECOMMENDING IMPROVEMENTS**

You can help improve this manual. If you find any mistakes or if you know of a way to improve the procedures, please let us know. Mail your letter, DA Form 2028 (Recommended Changes to Publication and Blank Forms), or DA Form 2028-2 located in the back of this manual direct to: Commander, US Army Communication-Electronics Command and Fort Monmouth, ATTN DRSEL-ME-MP, Fort Monmouth, NJ 07703.

In either case, a reply will be furnished direct to you.

Table of Contents

| SECTION |  | Page | Illus<br>Figure |
|---------|--|------|-----------------|
|         | I. Introduction . . . . .  | 1    |                 |
|         | II. Repair Parts List . . . . .  | 5    |                 |
|         | 00 Test Set, Radio AN/GRM-114 . . . . .                                  | 5    | 1               |
|         | 01 Mechanical Assembly Composite A1 . . . . .                            | 15   | 2               |
|         | 0101 Mechanical Assembly Front Panel A1A1 . . . . .                      | 21   | 3               |
|         | Mechanical Assembly Front Panel A1A1, Rear View . . . . .                | 23   | 4               |
|         | 010101 Wire Harness Assembly Front Panel A1A1A1 . . . . .                | 25   | 5               |
|         | 0102 Mechanical Assembly Upper Floor A1A3 . . . . .                      | 27   | 6               |
|         | 010202 Mechanical Assembly Het Amp 2 Prescaler A1A3A1 . . . . .          | 29   | 7               |
|         | 0107 Mechanical Assembly Rear Panel A1A8 . . . . .                       | 31   | 8               |
|         | Mechanical Assembly Rear Panel A1A8, Overall View . . . . .              | 35   | 9               |
|         | 010701 Mechanical Assembly Duty Cycle Regulator A1A8A1 . . . . .         | 37   | 10              |
|         | 0117 Mechanical Assembly Spetrum Analyzer A1A18 . . . . .                | 41   | 11              |
|         | 01170501 Mechanical Assembly Horizontal Sweep Switch A1A18A5A1 . . . . . | 43   | 12              |
|         | 01170503 Wire Harness Assembly Spectrum Analyzer . . . . .               | 45   | 13              |
|         | 0118 Mechanical Assembly First Mixer A1A19 . . . . .                     | 47   | 14              |
|         | 0123 Mechanical Assembly Lower Floor A1A24 . . . . .                     | 49   | 15              |
|         | 02 Case Assembly . . . . .   | 51   | 16              |
|         | 0201 Composite Assembly A2a1 . . . . .                                   | 53   | 17              |
| SECTION | III. Repair Parts List (Not applicable)                                  |      |                 |
|         | IV. National Stock Number and Part Number Index . . . . .                | 54   |                 |



## SECTION I

### INTRODUCTION

#### 1. Scope

This manual lists spares and repair parts; special tools; special test, measurement, and diagnostic equipment (TMDE), and other special support equipment required for performance of organizational, direct support, and general support maintenance of the AN/GRM-114. It authorizes the requisitioning and issue of spares and repair parts as indicated by the source and maintenance codes.

#### 2. General

This Repair Parts and Special Tools List is divided into the following sections:

*a. Section II. Repair Parts List.* A list of spares and repair parts authorized for use in the performance of maintenance. The list also includes parts which must be removed for replacement of the authorized parts. Parts list are composed of functional groups in numeric sequence, with the parts in each group listed in figure and item number sequence.

*b. Section III. Special Tools List.* Not applicable.

*c. Section IV. National Stock Number and Part Number Index.* A list, in National item identification number (NIIN) sequence, of all National stock numbers (NSN) appearing in the listings, followed by a list, in alphameric sequence, of all part numbers appearing in the listings. National stock numbers and part numbers are cross-referenced to each illustration figure and item number appearance.

#### 3. Explanation of Columns

*a. Illustration.* This column is divided as follows:

(1) *Figure number.* Indicates the figure number of the illustration on which the item is shown.

(2) *Item number.* The number used to identify item called out in the illustration.

*b. Source, Maintenance, and Recoverability (SMR) Codes.*

(1) *Source code.* Source codes indicate the manner of acquiring support items for maintenance, repair, or overhaul of end items. Source codes are entered in the first and second positions of the Uniform SMR Code format as follows:

| <i>Code</i> | <i>Definition</i>   |
|-------------|---|
| PA          | Item procured and stocked for anticipated or known usage. |
| PB          | Item procured and stocked for insurance purpose           |

| <i>Code</i> | <i>Definition</i>   |
|-------------|---|
|             | because essentiality dictates that a minimum quantity be available in the supply system.  |
| MH          | Item to be manufactured or fabricated at the general support maintenance level.   |
| MD          | Item to be manufactured or fabricated at the depot maintenance level.   |
| XA          | Item is not procured or stocked because the requirements for the item will result in the replacement of the next higher assembly. |
| XD-A        | support item that is not stocked. When required, item will be procured through normal supply channels.                            |

#### NOTE

Cannibalization or salvage may be used as a source of supply for any items source coded above except those coded XA and aircraft support items as restricted by AR 700-42.

(2) *Maintenance code.* Maintenance codes are assigned to indicate the levels of maintenance authorized to USE and REPAIR support items. The maintenance codes are entered in the third and fourth positions of the Uniform SMR Code format as follows:

(a) The maintenance code entered in the third position will indicate the lowest maintenance level authorized to remove, replace, and use the support item. The maintenance code entered in the third position will indicate one of the following levels of maintenance:

| <i>Code</i> | <i>Application/Explanation</i>   |
|-------------|--|
| H           | Support item is removed, replaced, used at the general support level.                                    |
| D           | Support items that are removed, replaced, used at depot, mobile depot, specialized repair activity only. |

(b) The maintenance code entered in the fourth position indicates whether the item is to be repaired and identifies the lowest maintenance level with the capability to perform complete repair (i.e., all authorized maintenance functions). This position will contain one of the following maintenance codes:

| <i>Code</i> | <i>Application/Exp!anation</i>  |
|-------------|---|
| H           | The lowest maintenance level capable of complete repair of the support item is the general support level. |
| D           | The lowest maintenance level capable of complete repair of the support item is the depot level.           |
| Z           | Nonreparable. No repair is authorized.  |

(3) *Recoverability code*. Recoverability codes are assigned to support items to indicate the disposition action on unserviceable items. The recoverability code is entered in the fifth position of the Uniform SMR Code format as follows:

| <i>Recoverability codes</i> | <i>Definition</i>   |
|-----------------------------|---|
| Z-Nonreparable item.        | When unserviceable, condemn and dispose at the level indicated in position 3.   |
| H-Reparable item.           | When uneconomically reparable, condemn and dispose at the general support level.  |
| D-Reparable item.           | When beyond lower level repair capability, return to depot. Condemnation and disposal not authorized below depot level. |

*c. National Stock Number*. Indicates the National stock number assigned to the item and will be used for requisitioning purposes.

*d. Federal Supply Code for Manufacturer (FSCM)*. The FSCM is a 5-digit numeric code listed in SB 708-41/42 which is used to identify the manufacturer, distributor, or Government agency, etc.

*e. Part Number*. Indicates the primary number used by the manufacturer (individual, company, firm, corporation, or Government activity), which controls the design and characteristics of the item by means of its engineering drawings, specifications, standards, and inspection requirements to identify an item or range of items.

**NOTE**

When a stock numbered item is requisitioned, the repair part received may have a different part number than the part being replaced.

*f. Description*. Indicates the Federal item name and, if required, a minimum description to identify the item.

*g. Unit of Measure (U/M)*. Indicates the standard of the basic quantity of the listed item as used in performing the actual maintenance function. This measure is expressed by a two-character alphabetical abbreviation (e.g., ea, in, pr, etc). When the unit of measure differs from the unit of issue, the lowest unit of issue that will satisfy the required units of measure will be requisitioned.

*h. Quantity Incorporated in Unit*. Indicates the quantity of the item used in the breakout shown on the illustration figure, which is prepared for a functional group, subfunctional group, or an assembly.

4. Special Information

*a.* Detailed manufacturing instructions for items

source coded to be manufactured or fabricated are found in TM 11-6625-3016-14.

*b.* The following publication pertains to the AN/GRM- 114 and its components:

TM 11-6625-3016-10-1, Test Set, Radio, AN/GRM-114 (To be published).

TM 11-6625-3016-14, Test Set, Radio, AN/GRM-114 (To be published).

TM 11-6625-3016-20-1, Test Set, Radio, AN/GRM-114 (To be published).

*c.* National stock numbers (NSN's) that are missing from P source coded items have been applied for and will be added to this TM by future change/revision when they are entered in the Army Master Data File (AMDF). Until the NSN's are established and published, submit exception requisitions to: commander, US Army Communications-Electronics Command and Fort Monmouth, ATTN: DRSEL-MM, Fort Monmouth, NJ 07703 for the part required to support your equipment.

5. How to Locate Repair Parts

*a.* When National stock number or part number is unknown.

(1) *First*. Using the table of contents, determine the functional group within which the item belongs. This is necessary since illustrations are prepared for functional groups and listings are divided into the same groups.

(2) *Second*. Find the illustration covering the functional group to which the item belongs.

(3) *Third*. Identify the item on the illustration and note the illustration figure and item number of the item.

(4) *Fourth*. Using the Repair Parts Listing, find the figure and item number noted on the illustration.

*b.* When National stock number or part number is known.

(1) *First*. Using the Index of National Stock Numbers and Part Numbers, find the pertinent National stock number or part number. This index is in NIIN sequence followed by a list of part numbers in alphanumeric sequence, cross-referenced to the illustration figure number and item number.

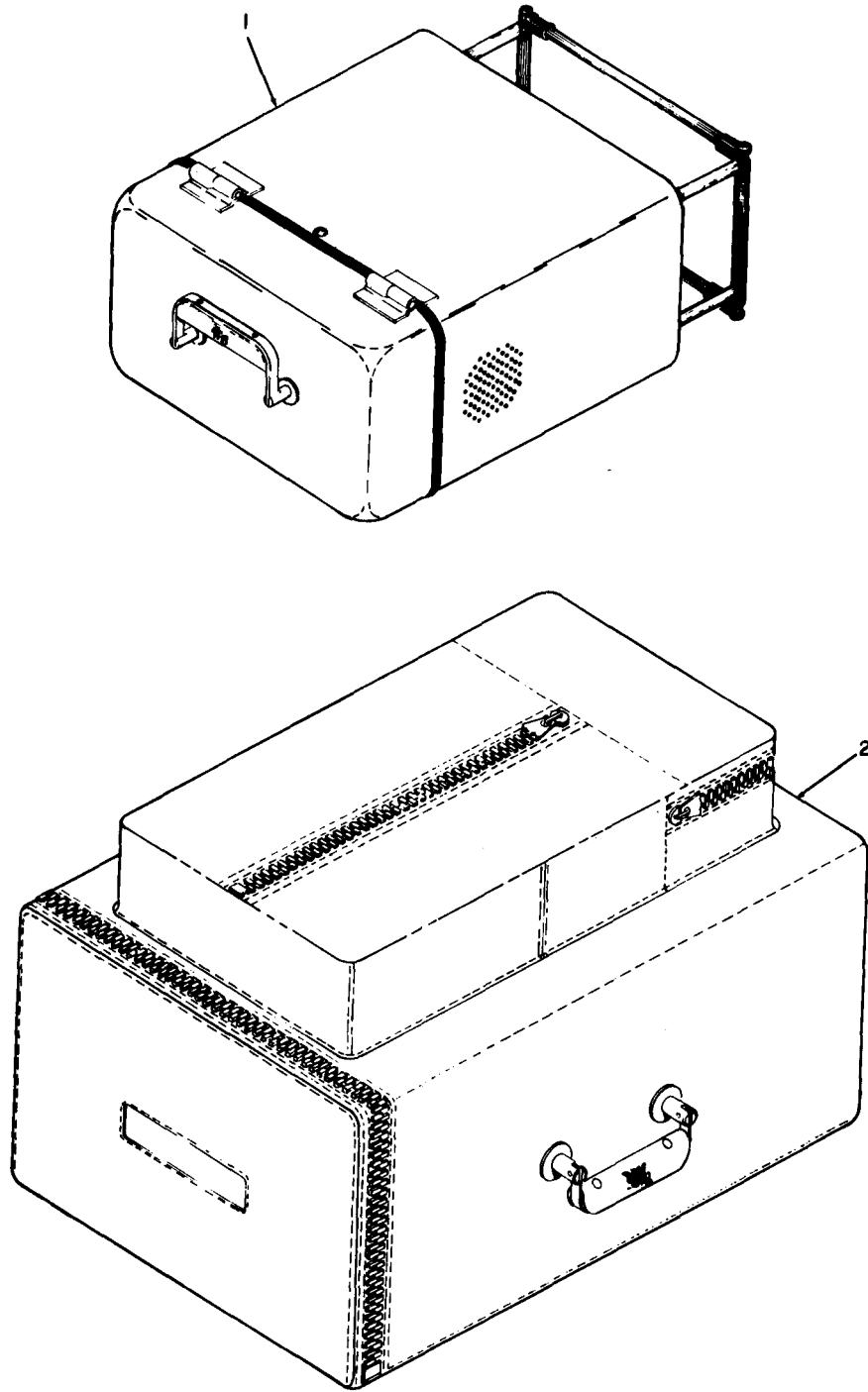
(2) *Second*. After finding the figure and item number, locate the figure and item number in the repair parts list.

6. Abbreviations

Not applicable.

**(Next printed page is 4)**





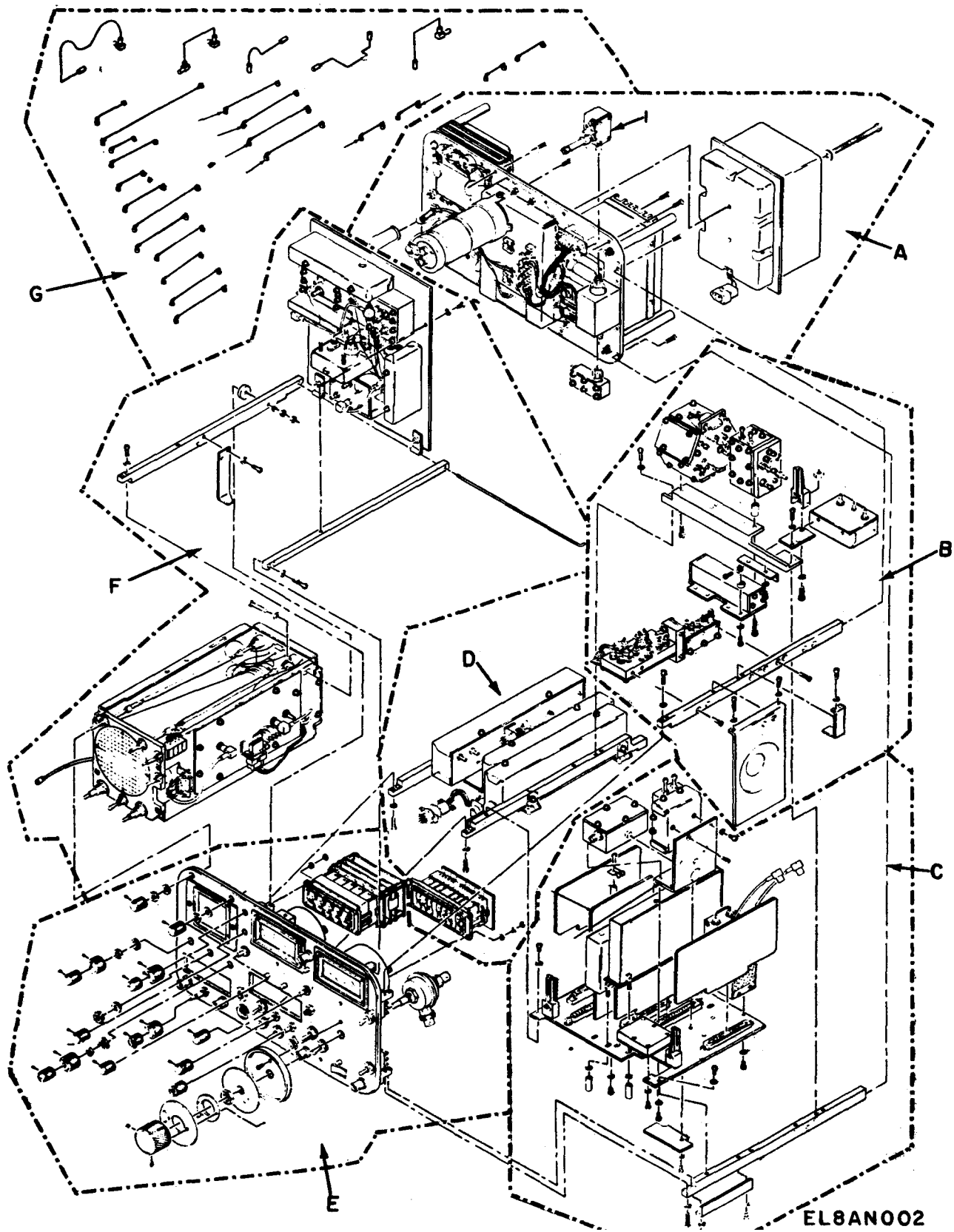
ELBAN001

Figure 1. Test Set, Radi o AN/GRM-114.



| SECTION II<br>(1)<br>ILLUSTRATION |                   | (2)         | (3)                         | TM11-6625-3016-24P<br>(4) (5) |                | (6)<br>DESCRIPTION                  | (7)            | (8)<br>QTY<br>INC<br>IN<br>UNIT |
|-----------------------------------|-------------------|-------------|-----------------------------|-------------------------------|----------------|-------------------------------------|----------------|---------------------------------|
| (A)<br>FIG<br>NO                  | (B)<br>ITEM<br>NO | SMR<br>CODE | NATIONAL<br>STOCK<br>NUMBER | FSCM                          | PART<br>NUMBER |                                     | USABLE ON CODE | U/M                             |
|                                   |                   |             |                             |                               |                | GROUP 00 TEST SET, RADIO AN/GRM-114 |                |                                 |
| 1                                 | 1                 | PAHDD       | 6625-01-131-3439            | 51190                         | 7019-2342-901  | CASE ASSEMBLY                       | EA             | 1                               |
| 1                                 | 2                 | XADDD       |                             | 51190                         | 7003-2364-101  | COMP ASSY                           | EA             | 1                               |

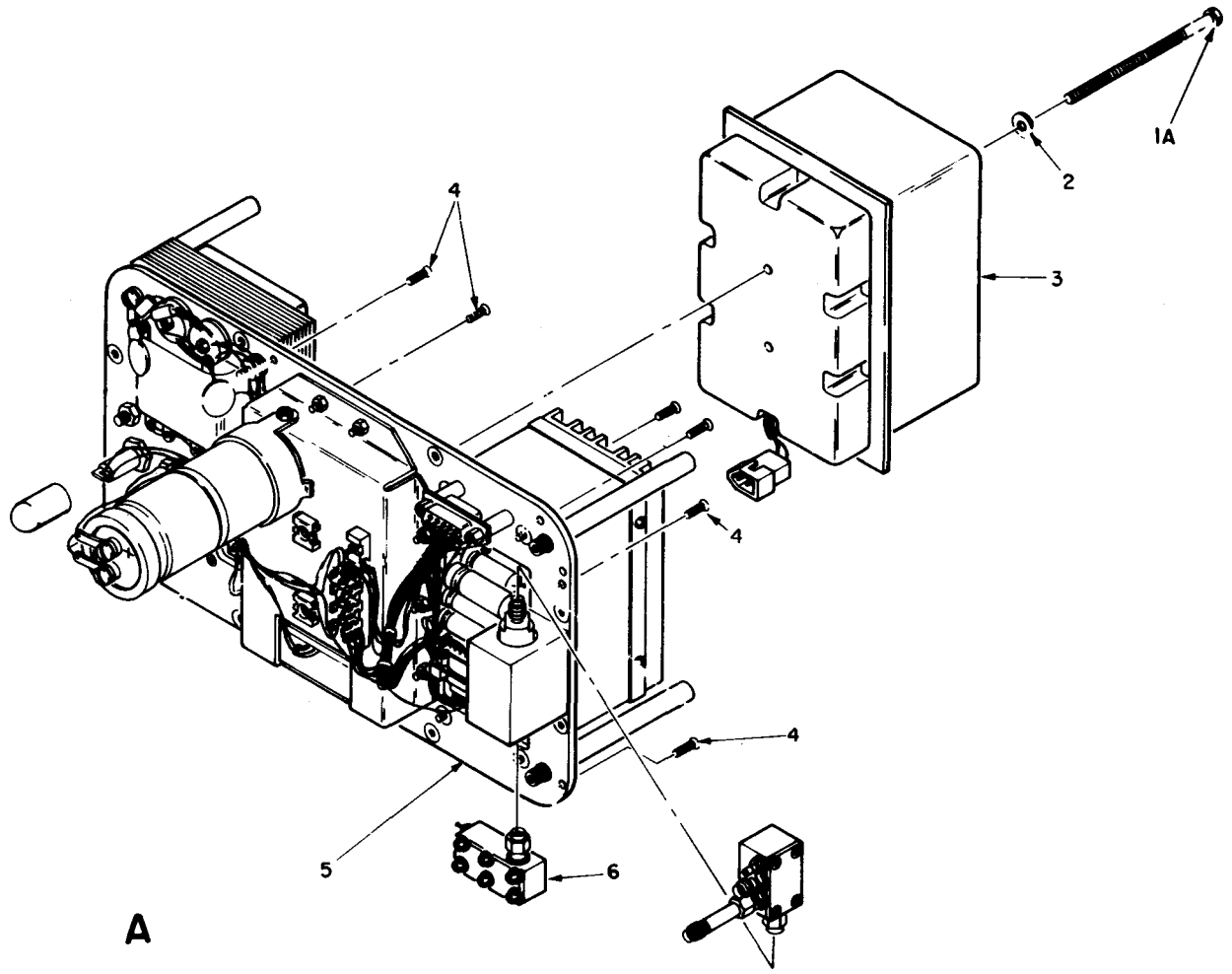




EL8AN002

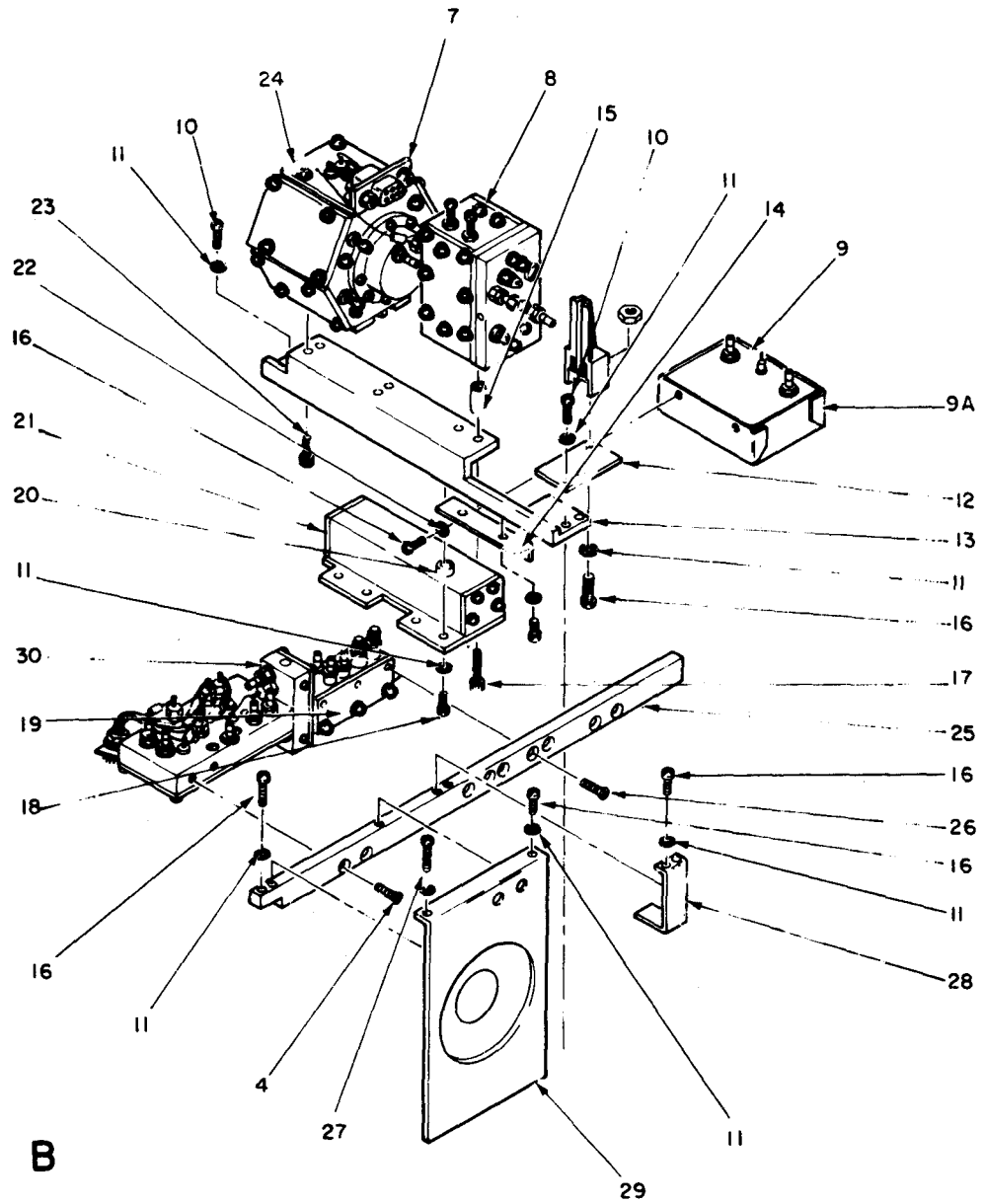
Figure 2. Mechanical Assembly Composite A1 (Sheet 1 of 8).

8



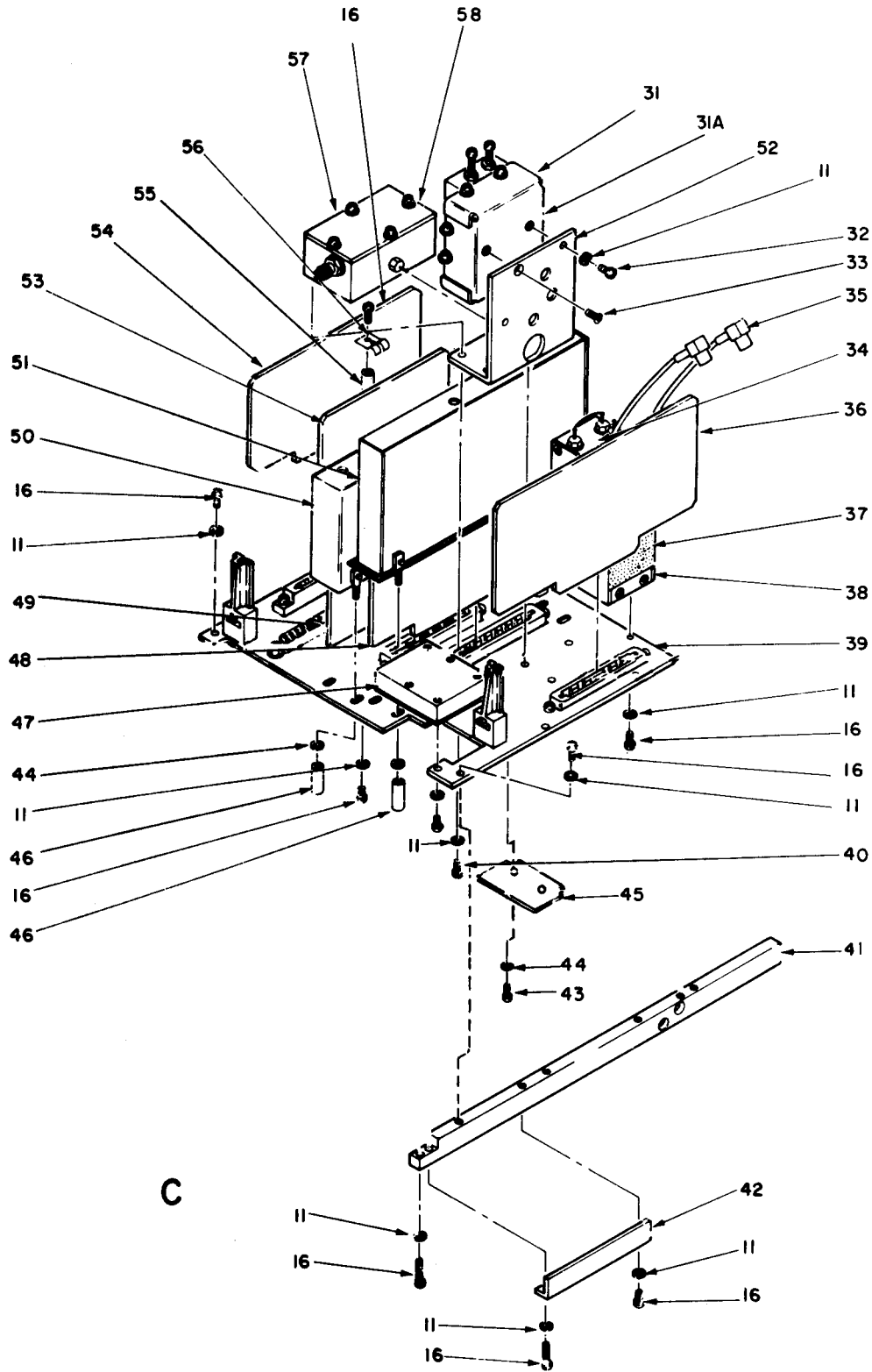
EL8AN023

Figure 2. Mechanical Assembly Composite A1 (Sheet 2 of 8).



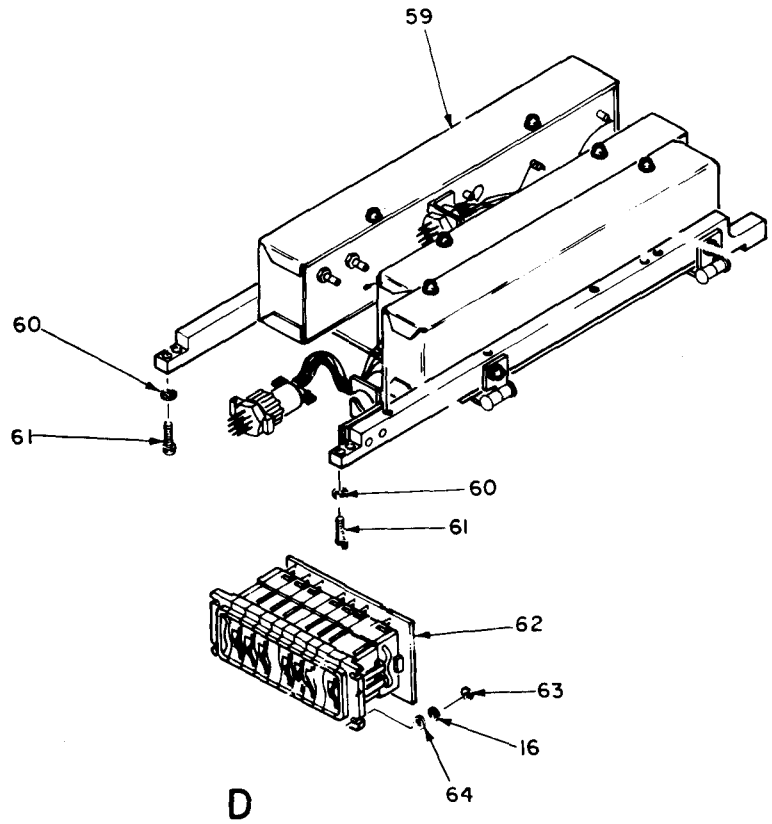
EL8ANO18

Figure 2. Mechanical Assembly Composite A1 (Sheet 3 of 8).



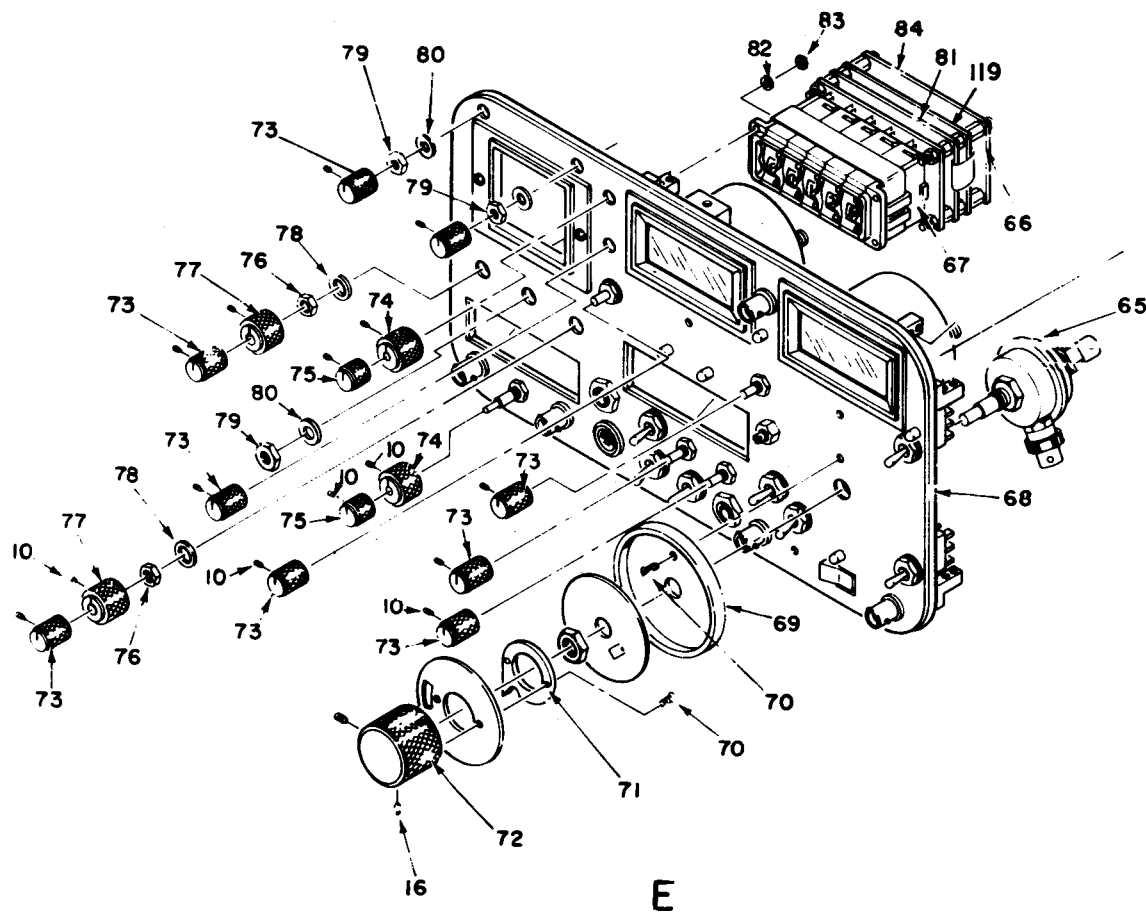
EL 8AN019

Figure 2. Mechanical Assembly Composite A1 (Sheet 4 of 8).



EL8AN020

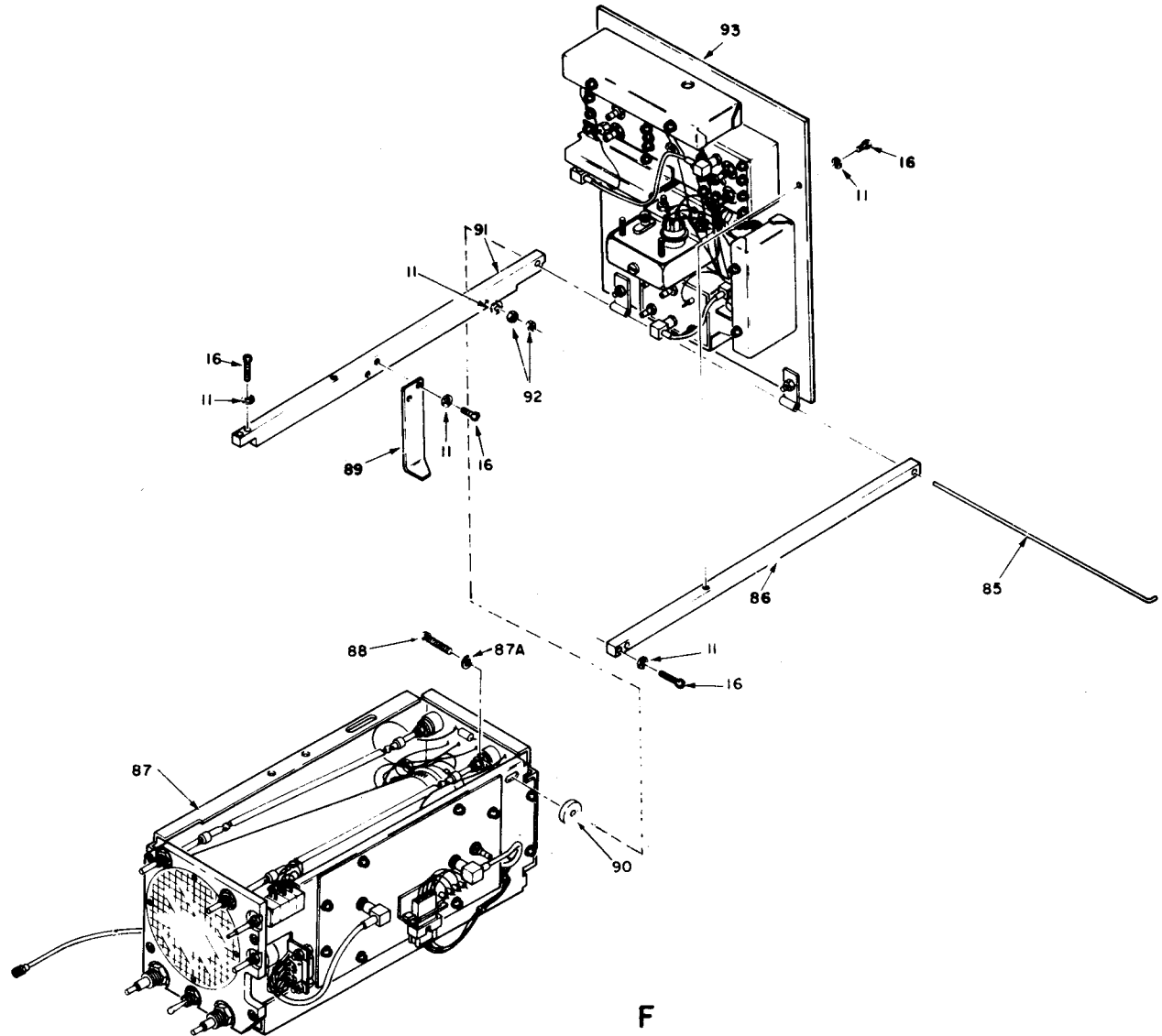
Figure 2. Mechanical Assembly Composite A1 (Sheet 5 of 8).



EL8AN021

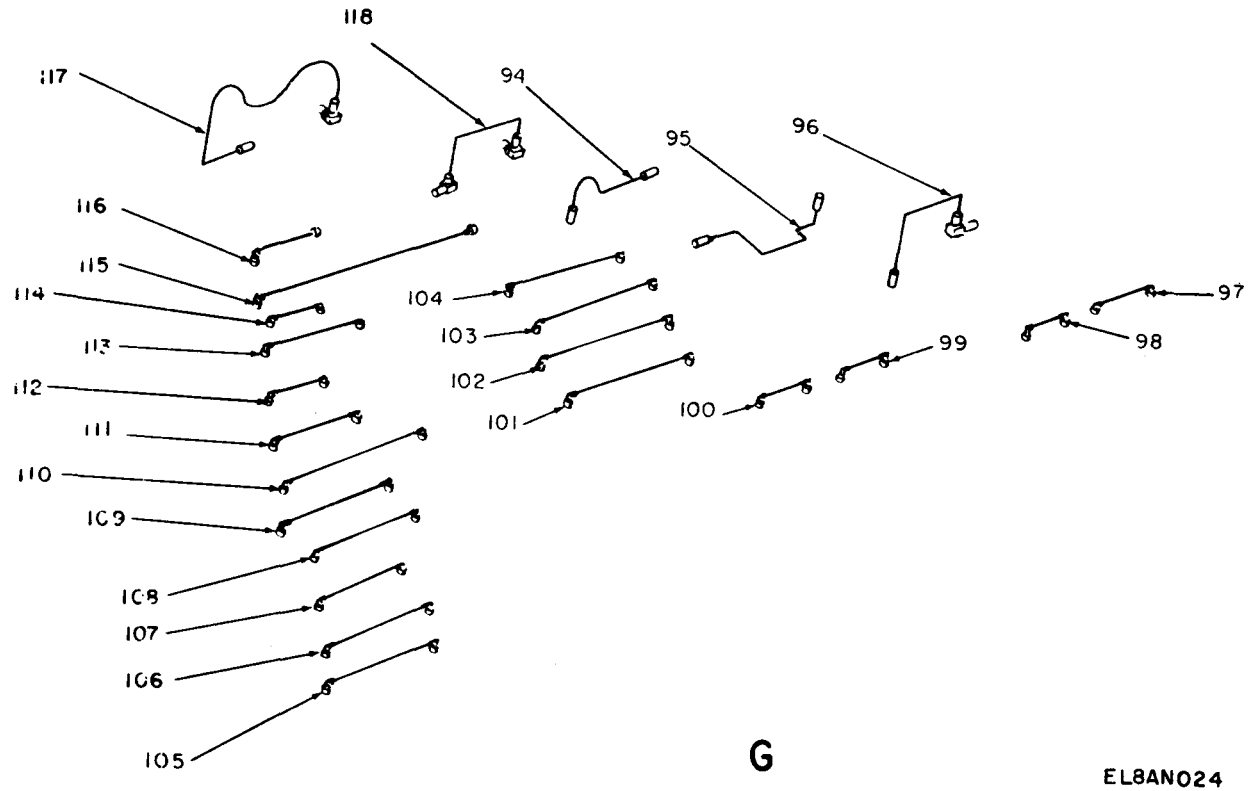
Figure 2. Mechanical Assembly Composite A1 (Sheet 6 of 8).





EL8AN022

Figure 2. Mechanical Assembly Composite A1 (Sheet 7 of 8)



1 4

Figure 2. Mechanical Assembly Composite A1 (Sheet 8 of 8).

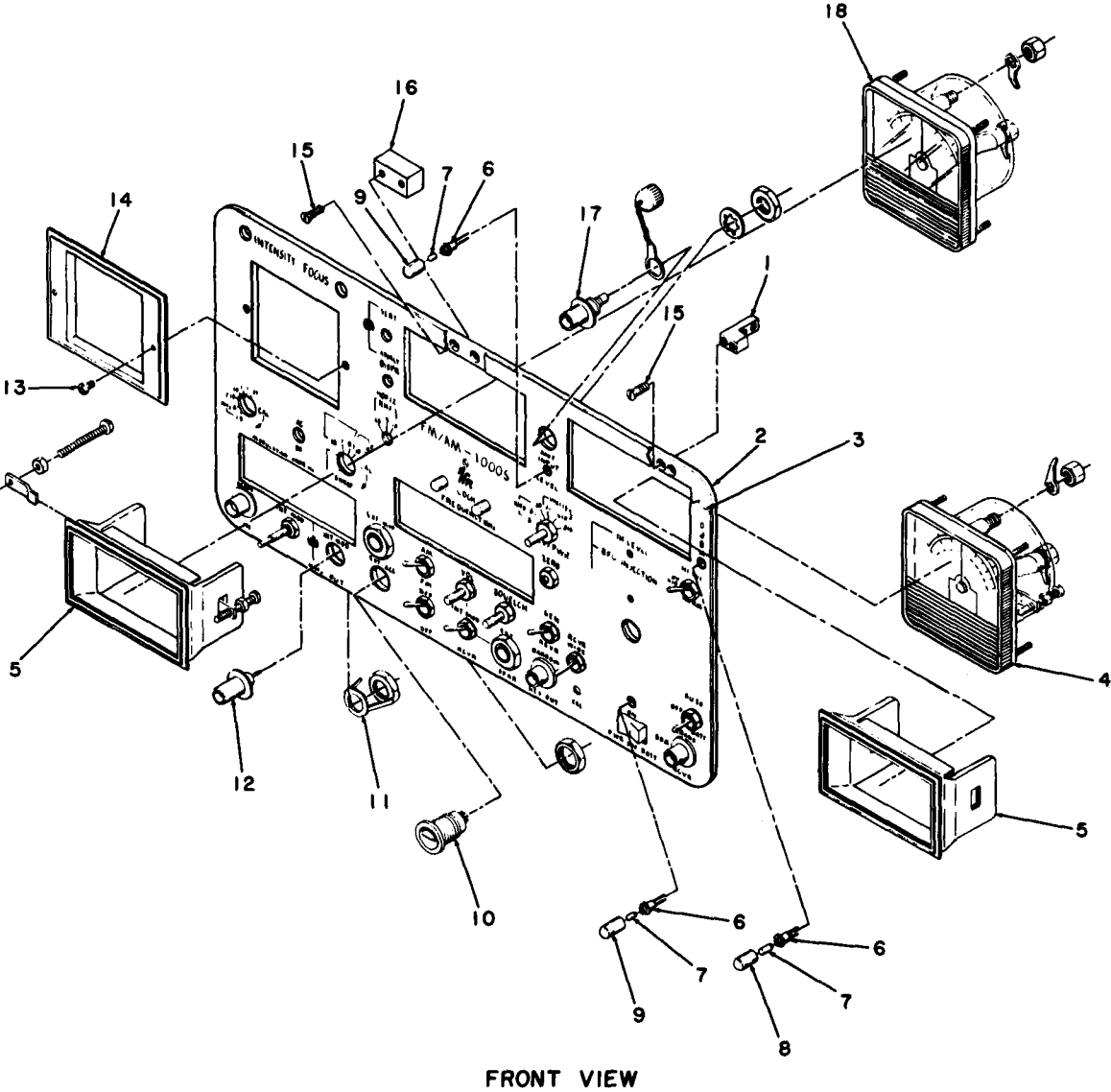
| SECTION II<br>(1)<br>ILLUSTRATION         |                   | (2)         | (3)                         | TM11-6625-3016-24P |                       | (6)                 | (7)            | (8)                      |
|---|-------------------|-------------|-----------------------------|--------------------|-----------------------|---------------------|----------------|--------------------------|
| (A)<br>FIG<br>NO                          | (B)<br>ITEM<br>NO | SMR<br>CODE | NATIONAL<br>STOCK<br>NUMBER | (4)<br>FSCM        | (5)<br>PART<br>NUMBER | DESCRIPTION         | USABLE ON CODE | QTY<br>INC<br>IN<br>UNIT |
| GROUP 01 MECHANICAL ASSEMBLY COMPOSITE A1 |                   |             |                             |                    |                       |                     |                |                          |
| 2   | 1                 | PAHZZ       | 6625-01-108-0966            | 51190              | 7005-2373-700         | POWER MONITOR       | EA             | 1                        |
| 2   | 1A                | PAHZZ       | 5305-00-054-6661            | 96906              | MS51957-37            | SCREW,MACHINE       | EA             | 2                        |
| 2   | 2                 | PAHZZ       | 5310-00-167-0752            | 88044              | AN960D10L             | WASHER,FLAT         | EA             | 2                        |
| 2   | 3                 | PAHZZ       |                             | 51190              | 7005-2338-001         | BATTERY,MOD         | EA             | 1                        |
| 2   | 4                 | PAHZZ       | 5305-00-763-6963            | 96906              | MS51957-28            | SCREW,MACHINE       | EA             | 7                        |
| 2   | 5                 | XAHHH       |                             | 51190              | 7005-2338-001         | MECH ASSY           | EA             | 1                        |
| 2   | 6                 | XDHZZ       |                             | 51190              | 7005-2374-000         | MECH ASSY           | EA             | 1                        |
| 2   | 7                 | PAHZZ       | 6625-01-108-0956            | 51190              | 7015-2309-700         | HEX BLOCK ASSY      | EA             | 1                        |
| 2   | 8                 | PAHZZ       | 6625-01-109-1677            | 51190              | 7013-2329-700         | SWITCH ASSEMBLY     | EA             | 1                        |
| 2   | 9                 | PAHZZ       | 6625-01-109-0697            | 51190              | 7018-2359-100         | FILTER ASSEMBLY     | EA             | 1                        |
| 2   | 9A                | XADZZ       |                             | 51190              | 7010-2330-300         | PRINTED CKT BD ASSY | EA             | 1                        |
| 2   | 10                | PAHZZ       | 5305-00-054-5644            | 96906              | MS51957-11            | SCREW,MACHINE       | EA             | 4                        |
| 2   | 11                | PAHZZ       | 5310-00-193-7577            | 96906              | MS35333-36            | WASHER,LOCK         | EA             | 4                        |
| 2   | 12                | PAHZZ       |                             | 51190              | 2506-2333-900         | PLATE,MOUNTING      | EA             | 1                        |
| 2   | 13                | XDHZZ       |                             | 51190              | 1400-2329-000         | BRACKET,MTG         | EA             | 1                        |
| 2   | 14                | MDHZZ       |                             | 51190              | 1400-2375-800         | BRACKET,MTG         | EA             | 1                        |
| 2   | 15                | XADZZ       |                             | 51190              | 2800-7600-116         | SPACER              | EA             | 2                        |
| 2   | 16                | PAHZZ       | 5305-00-054-5653            | 96906              | MS51957-19            | SCREW,MACHINE       | EA             | 2                        |
| 2   | 17                | XADZZ       |                             | 96906              | MS16995-12            | SCREW,MACH          | EA             | 2                        |
| 2   | 18                | PAHZZ       | 5305-00-054-5650            | 96906              | MS51957-16            | SCREW,MACHINE       | EA             | 4                        |
| 2   | 19                | PAHHH       | 6625-01-108-0953            | 51190              | 7005-2373-300         | FIRST MIXER ASSY    | EA             | 1                        |
| 2   | 20                | XADZZ       |                             | 51190              | 2800-2600-161         | SPACER              | EA             | 4                        |
| 2   | 21                | PAHZZ       |                             | 51190              | 7018-2340-200         | FILTER,BAND PASS    | EA             | 1                        |
| 2   | 22                | XADZZ       |                             | 96906              | MS35233-131           | WASHER,LOCK         | EA             | 2                        |
| 2   | 23                | PAHZZ       | 5305-00-959-0379            | 96906              | MS16995-10            | SCREW,CAP,SOCKET HE | EA             | 4                        |
| 2   | 24                | XADZZ       |                             | 51190              | 7010-2310-100         | PRINTED CKT BD ASSY | EA             | 1                        |
| 2   | 25                | XDHZZ       |                             | 51190              | 1404-2316-700         | RAIL,SPRT           | EA             | 1                        |
| 2   | 26                | PAHZZ       | 5305-00-768-0336            | 96906              | MS51959-17            | SCREW,MACHINE       | EA             | 3                        |
| 2   | 27                | PAHZZ       | 5305-00-054-5651            | 96906              | MS51957-17            | SCREW,MACHINE       | EA             | 1                        |
| 2   | 28                | PAHZZ       |                             | 51190              | 4503-2376-300         | RETAINER            | EA             | 1                        |
| 2   | 29                | PAHZZ       |                             | 51190              | 5950-2323-400         | SPEAKER ASSEMBLY    | EA             | 1                        |
| 2   | 30                | PAHZZ       |                             | 51190              | 7017-2346-200         | SECOND MIXER        | EA             | 1                        |
| 2   | 31                | PAHZZ       |                             | 51190              | 7048-2351-600         | MULTIPIER AMPLIFIER | EA             | 1                        |
| 2   | 31A               | XADZZ       |                             | 51190              | 7010-2351-300         | PRINTED CKT BD ASSY | EA             | 1                        |
| 2   | 32                | PAHZZ       | 5305-00-764-2966            | 96906              | MS51959-2             | SCREW,MACHINE       | EA             | 3                        |
| 2   | 33                | PAHZZ       | 5305-00-777-6039            | 96906              | MS51959-12            | SCREW,MACHINE       | EA             | 1                        |
| 2   | 34                | XADZZ       |                             | 51190              | 7010-2372-100         | PRINTED CKT BD ASSY | PA             | 1                        |
| 2   | 35                | XADZZ       |                             | 51190              | 6050-0021-410         | COAX ASSY           | EA             | 1                        |
| 2   | 36                | PAHZZ       | 6625-01-108-0959            | 51190              | 7010-2357-300         | AUDIO BD            | EA             | 1                        |

| SECTION II   |      | TM11-6625-3016-24P |                  |        |               |                     |      |   |
|--------------|------|--------------------|------------------|--------|---------------|---------------------|------|---|
| (1)          | (2)  | (3)                | (4)              | (5)    | (6)           | (7)                 | (8)  |   |
| ILLUSTRATION |      | NATIONAL           |                  |        | DESCRIPTION   | USABLE ON CODE      | QTY  |   |
| (A)          | (B)  | STOCK              | FSCM             | PART   |               |                     | INC  |   |
| FIG          | ITEM | NUMBER             |                  | NUMBER |               |                     | IN   |   |
| NO           | NO   |                    |                  |        |               |                     | UNIT |   |
|              |      | SMR                |                  |        |               |                     |      |   |
|              |      | CODE               |                  |        |               |                     |      |   |
| 2            | 37   | PAHZZ              | 6625-01-108-0952 | 51190  | 7005-2372-500 | HIGH LEVEL AMP ASSY | EA   | 1 |
| 2            | 38   | XADZZ              |                  | 51190  | 7010-2372-400 | PRINTED CKT BD ASSY | PA   | 1 |
| 2            | 39   | PAHZZ              |                  | 51190  | 7005-2363-701 | MOTHER BOARD        | EA   | 1 |
| 2            | 40   | PAHZZ              | 5305-00-054-5636 | 96906  | MS51957-2     | SCREW,MACHINE       | EA   | 4 |
| 2            | 41   | XDHZZ              |                  | 51190  | 1404-2316-500 | RAIL,SPRT           | EA   | 1 |
| 2            | 42   | XDHZZ              |                  | 51190  | 1400-2357-500 | RETAINER            | EA   | 1 |
| 2            | 43   | PADZZ              | 5305-00-054-5638 | 96906  | MS51957-4     | SCREW,MACHINE       | EA   | 2 |
| 2            | 44   | PADZZ              |                  | 96906  | MS35233-131   | WASHER,LOCK         | EA   | 2 |
| 2            | 45   | PAHZZ              |                  | 51190  | 7010-2373-100 | RELAY DRIVER        | EA   | 1 |
| 2            | 46   | PADZZ              |                  | 51190  | 2850-7617-400 | NUT SPACER          | EA   | 9 |
| 2            | 47   | PAHZZ              | 6625-01-108-0967 | 51190  | 7022-2360-200 | STATIC PROTECT ASSY | EA   | 1 |
| 2            | 48   | PADZH              | 6625-01-108-0961 | 51190  | 7010-2342-400 | LO FREQ PHA LOCK BD | EA   | 1 |
| 2            | 49   | PADZH              | 6625-01-108-0960 | 51190  | 7010-2349-300 | HI FREQ PHA LOCK BD | EA   | 1 |
| 2            | 50   | XAHZZ              |                  | 51190  | 1415-2348-500 | COVER               | EA   | 1 |
| 2            | 51   | XAHZZ              |                  | 51190  | 1415-2344-200 | COVER               | EA   | 1 |
| 2            | 52   | XADZZ              |                  | 51190  | 1400-2327-400 | BRACKET,MTG         | EA   | 1 |
| 2            | 53   | PAHZZ              | 6625-01-108-0958 | 51190  | 7010-2342-300 | VCO TUNER BD        | EA   | 1 |
| 2            | 54   | PAHZZ              | 6625-01-109-1670 | 51190  | 7010-2367-201 | POWER SUPPLY REG BD | EA   | 1 |
| 2            | 55   | XAHZZ              |                  | 51190  | 2813-7600-163 | SPACER              | EA   | 1 |
| 2            | 56   | XAHZZ              |                  | 51190  | 4503-2342-600 | RETAINER            | EA   | 1 |
| 2            | 57   | PAHZZ              | 6625-01-109-1673 | 51190  | 7014-2355-400 | AMPLIFIER           | EA   | 1 |
| 2            | 58   | XADZZ              |                  | 51190  | 7010-2354-900 | PRINTED CKT BD ASSY | EA   | 1 |
| 2            | 59   | PAHHH              | 6625-01-131-2623 | 51190  | 7005-2349-201 | LOWER FLOOR         | EA   | 1 |
| 2            | 60   | PAHZZ              | 5310-00-193-7577 | 96906  | MS35333-36    | WASHER,LOCK         | EA   | 4 |
| 2            | 61   | PAHZZ              | 5305-00-054-5651 | 96906  | MS51957-17    | SCREW,MACHINE       | EA   | 4 |
| 2            | 62   | PAHZZ              |                  | 51190  | 7013-2343-300 | FREQ SELECT SWITCH  | EA   | 1 |
| 2            | 63   | PAHZZ              | 5310-00-938-2013 | 96906  | MS35649-224   | NUT,PLAIN,HEXAGON   | EA   | 4 |
| 2            | 64   | PAHZZ              | 5310-00-167-0657 | 88044  | AN960-3       | WASHER,FLAT         | EA   | 4 |
| 2            | 65   | XDHZZ              |                  | 51190  | 6500-2353-400 | MINOR ASSY          | EA   | 1 |
| 2            | 66   | XADZZ              |                  | 51190  | 7010-2374-600 | PRINTED CKT BD ASSY | EA   | 1 |
| 2            | 67   | XADZZ              |                  | 18324  | NE5532N       | INTEGRATED CKT      | EA   | 1 |
| 2            | 68   | XAHHH              |                  | 51190  | 7005-2377-700 | MECH ASSY           | EA   | 1 |
| 2            | 69   | PAHZZ              |                  | 51190  | 2405-2302-700 | RING,DIAL           | EA   | 1 |
| 2            | 70   | PAHZZ              | 5305-00-727-8833 | 96906  | MS51959-3     | SCREW,MACHINE       | EA   | 1 |
| 2            | 71   | PAHZZ              |                  | 51190  | 2401-2347-600 | STOP,DIAL           | EA   | 1 |
| 2            | 72   | PAHZZ              |                  | 51190  | 2402-2347-700 | KNOB                | EA   | 1 |
| 2            | 73   | PAHZZ              |                  | 51190  | 2402-0921-900 | KNOB                | EA   | 9 |
| 2            | 74   | PAHZZ              |                  | 51190  | 2402-0940-000 | KNOB                | EA   | 2 |
| 2            | 75   | PAHZZ              |                  | 51190  | 2402-0018-300 | KNOB                | EA   | 2 |
| 2            | 76   | PAHZZ              | 5310-00-934-9765 | 96906  | MS35650-304   | NUT,PLAIN,HEXAGON   | EA   | 2 |

| SECTION II<br>(1)<br>ILLUSTRATION |                   | (2)         | (3)                         | TM11-6625-3016-24P |                       | (6)                  | (7)            | (8)  |
|-----------------------------------|-------------------|-------------|-----------------------------|--------------------|-----------------------|----------------------|----------------|------|
| (A)<br>FIG<br>NO                  | (B)<br>ITEM<br>NO | SMR<br>CODE | NATIONAL<br>STOCK<br>NUMBER | (4)<br>FSCM        | (5)<br>PART<br>NUMBER | DESCRIPTION          | USABLE ON CODE | U/M  |
| 2                                 | 77                | PAHZZ       |                             | 51190              | 2402-0922-000         | KNOB                 |                | EA 2 |
| 2                                 | 78                | PAHZZ       |                             | 51190              | 2840-7600-205         | WASHER               |                | EA 2 |
| 2                                 | 79                | PADZZ       | 5310-00-400-5503            | 96906              | MS35650-3254          | NUT,PLAIN,HEXAGON    |                | EA 1 |
| 2                                 | 80                | PADZZ       |                             | 51190              | 2840-7600-208         | WASHER               |                | EA 1 |
| 2                                 | 81                | XADZZ       |                             | 51190              | 7010-2375-200         | PRINTED CKT BD ASSY  |                | EA 1 |
| 2                                 | 82                | XAHZZ       |                             | 96906              | MS35233-131           | WASHER, LOCK         |                | EA 4 |
| 2                                 | 83                | XAHZZ       |                             | 96906              | MS35649-224           | NUT,PLAIN,HEXAGON    |                | EA 4 |
| 2                                 | 84                | PAHZZ       | 6625-01-108-0964            | 51190              | 7005-2375-300         | tone GENERATOR       |                | EA 1 |
| 2                                 | 85                | XDHZZ       |                             | 51190              | 2509-2317-100         | ROD, HINGE           |                | EA 1 |
| 2                                 | 86                | XDHZZ       |                             | 51190              | 1404-2316-400         | RAIL, SPRT           |                | EA 1 |
| 2                                 | 87                | XADDD       |                             | 51190              | 7029-2362-600         | MECH ASSY            |                | EA 1 |
| 2                                 | 87A               | PADZZ       | 5310-00-782-1349            | 96906              | MS15795-804           | WASHER, FLAT         |                | EA 1 |
| 2                                 | 88                | PADZZ       |                             | 51190              | 2807-7632-600         | SCREW, EXTERNALLY RE |                | EA 1 |
| 2                                 | 89                | XDDZZ       |                             | 51190              | 4503-2335-500         | RETAINER             |                | EA 1 |
| 2                                 | 90                | PADZZ       |                             | 51190              | 2840-7600-219         | WASHER               |                | EA 1 |
| 2                                 | 91                | XDDZZ       |                             | 51190              | 1404-2316-600         | RAIL, SPRT           |                | EA 1 |
| 2                                 | 92                | PADZZ       | 5310-00-934-9748            | 96906              | MS35649-244           | NUT,PLAIN,HEXAGON    |                | EA 2 |
| 2                                 | 93                | XAHHH       |                             | 51190              | 7006-2364-400         | MECH ASSY            |                | EA 1 |
| 2                                 | 94                | PBDZZ       |                             | 51190              | 6042-2375-600         | CABLE, RADIO FREQUEN |                | EA 1 |
| 2                                 | 95                | PBDZZ       |                             | 51190              | 6042-2375-700         | CABLE, RADIO FREQUEN |                | EA 1 |
| 2                                 | 96                | PBDZZ       |                             | 51190              | 6042-2375-500         | CABLE, RADIO FREQUEN |                | EA 1 |
| 2                                 | 97                | PBDZZ       |                             | 51190              | 6050-9900-100         | CABLE, RADIO FREQUEN |                | EA 1 |
| 2                                 | 98                | PBDZZ       |                             | 51190              | 6050-0320-720         | CABLE, RADIO FREQUEN |                | EA 1 |
| 2                                 | 99                | PBDZZ       |                             | 51190              | 6050-0320-620         | CABLE, RADIO FREQUEN |                | EA 1 |
| 2                                 | 100               | PBDZZ       |                             | 51190              | 6050-0060-745         | CABLE, RADIO FREQUEN |                | EA 1 |
| 2                                 | 101               | PBDZZ       |                             | 51190              | 6050-0052-325         | CABLE, RADIO FREQUEN |                | EA 1 |
| 2                                 | 102               | PBDZZ       |                             | 51190              | 6050-0050-925         | CABLE, RADIO FREQUEN |                | EA 1 |
| 2                                 | 103               | PBDZZ       |                             | 51190              | 6050-0042-220         | CABLE, RADIO FREQUEN |                | EA 1 |
| 2                                 | 104               | PBDZZ       |                             | 51190              | 6050-0042-120         | CABLE, RADIO FREQUEN |                | EA 3 |
| 2                                 | 105               | PBDZZ       |                             | 51190              | 6050-0042-020         | CABLE, RADIO FREQUEN |                | EA 2 |
| 2                                 | 106               | PBDZZ       |                             | 51190              | 6050-0041-970         | CABLE, RADIO FREQUEN |                | EA 1 |
| 2                                 | 107               | PBDZZ       |                             | 51190              | 6050-0041-820         | CABLE, RADIO FREQUEN |                | EA 2 |
| 2                                 | 108               | PBDZZ       |                             | 51190              | 6050-0041-720         | CABLE, RADIO FREQUEN |                | EA 2 |
| 2                                 | 109               | PBDZZ       |                             | 51190              | 6050-0041-620         | CABLE, RADIO FREQUEN |                | EA 1 |
| 2                                 | 110               | PBDZZ       |                             | 51190              | 6050-0041-320         | CABLE, RADIO FREQUEN |                | EA 3 |
| 2                                 | 111               | PBDZZ       |                             | 51190              | 6050-0041-220         | CABLE, RADIO FREQUEN |                | EA 1 |
| 2                                 | 112               | PBDZZ       |                             | 51190              | 6050-0040-870         | CABLE, RADIO FREQUEN |                | EA 1 |
| 2                                 | 113               | PADZZ       |                             | 51190              | 6050-0040-620         | CABLE, RADIO FREQUEN |                | EA 1 |
| 2                                 | 114               | PBDZZ       |                             | 51190              | 6050-0040-570         | CABLE, RADIO FREQUEN |                | EA 2 |
| 2                                 | 115               | PBDZZ       |                             | 51190              | 6050-0033-440         | CABLE, RADIO FREQUEN |                | EA 1 |

| SECTION II   |      | TM11-6625-3016-24P |       |               |                        |                |     |      |  |
|--------------|------|--------------------|-------|---------------|------------------------|----------------|-----|------|--|
| (1)          | (2)  | (3)                | (4)   | (5)           | (6)                    |                | (7) | (8)  |  |
| ILLUSTRATION |      | NATIONAL           |       |               | DESCRIPTION            |                |     | QTY  |  |
| (A)          | (B)  | STOCK              |       |               |                        |                |     | INC  |  |
| FIG          | ITEM | NUMBER             | FSCM  | PART          |                        |                |     | IN   |  |
| NO           | NO   |                    |       | NUMBER        |                        | USABLE ON CODE | U/M | UNIT |  |
|              |      |                    |       |               |                        |                |     |      |  |
| 2            | 116  | PBDZZ              | 51190 | 6050-0010-805 | CABLE,RADIO FREQUEN    |                |     | EA 1 |  |
| 2            | 117  | PBDZZ              | 51190 | 6042-2376-600 | CABLE,RADIO FREQUEN    |                |     | EA 1 |  |
| 2            | 118  | PBDZZ              | 51190 | 6042-2376-400 | CABLE,RADIO FREQUEN    |                |     | EA 1 |  |
| 2            | 119  | PAHZZ              | 51190 | 7010-2374-900 | PRINTED CKT BOARD ASSY |                |     | EA 1 |  |





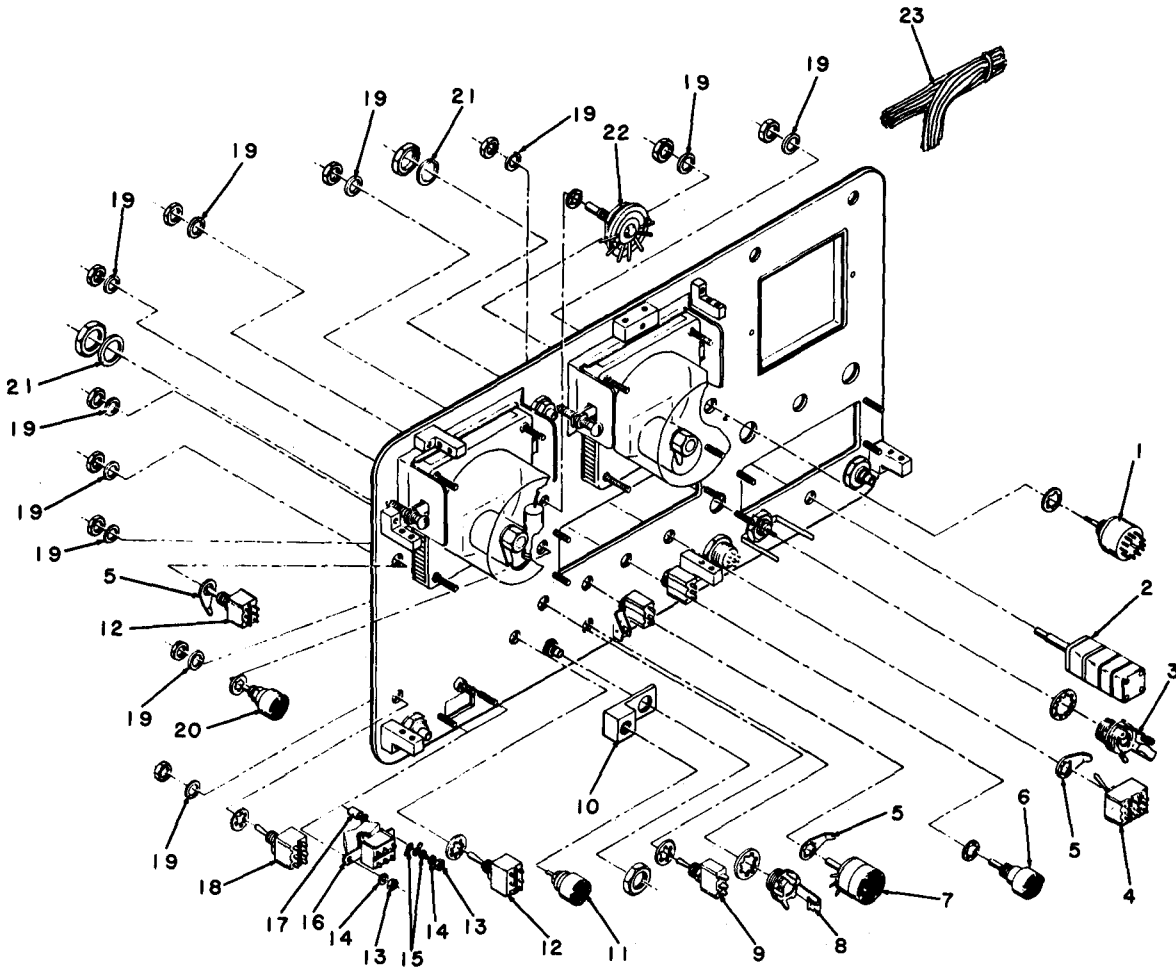
FRONT VIEW

ELBANO03

Figure 3. Mechanical Assembly Front Panel A1A1.



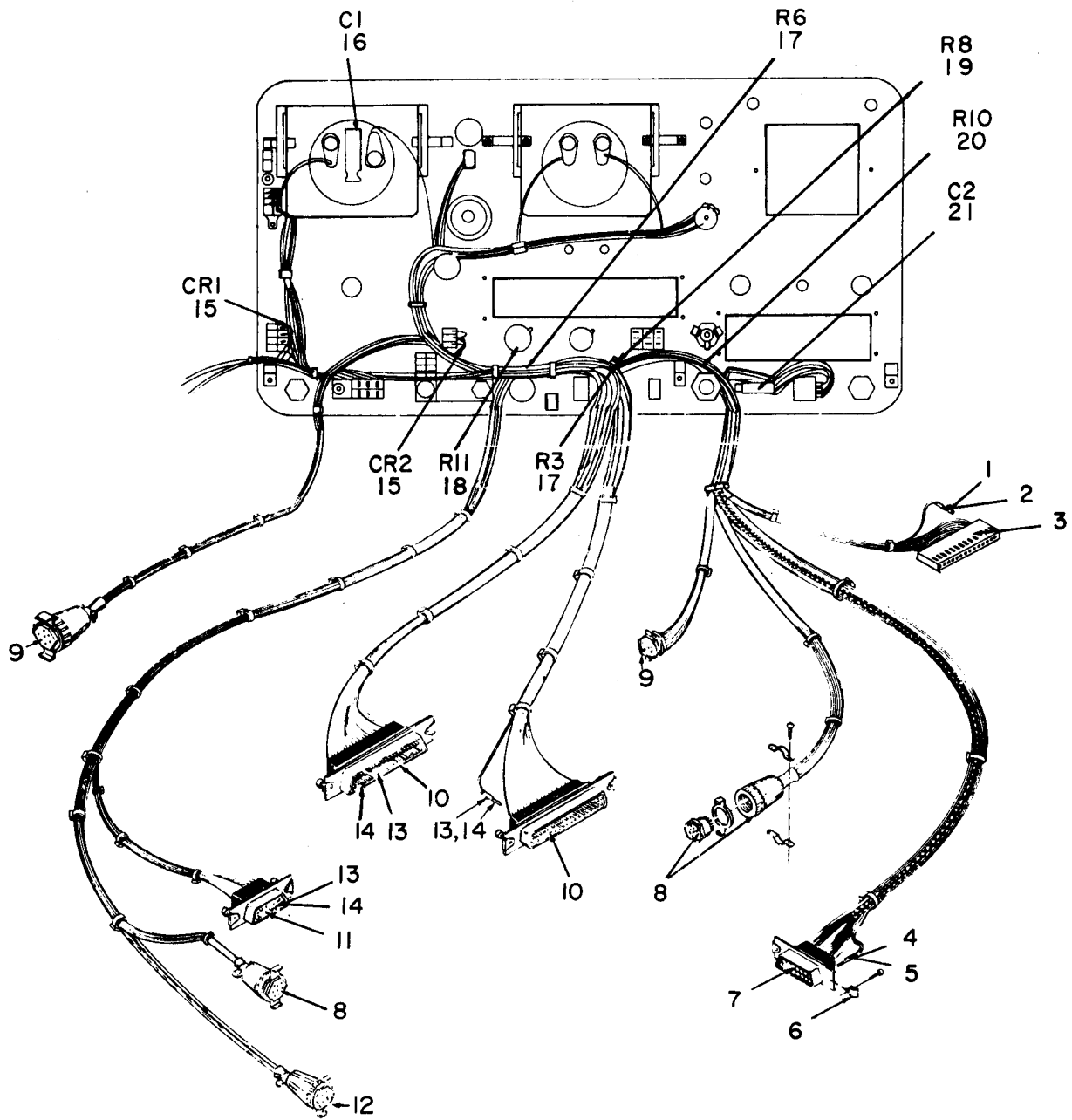
| SECTION II<br>(1)<br>ILLUSTRATION    |                   | (2)         | (3)                         | TM11-6625-3016-24P |                       | (6)                 | (7)            | (8)         |
|--------------------------------------|-------------------|-------------|-----------------------------|--------------------|-----------------------|---------------------|----------------|-------------|
| (A)<br>FIG<br>NO                     | (B)<br>ITEM<br>NO | SMR<br>CODE | NATIONAL<br>STOCK<br>NUMBER | (4)<br>FSCM        | (5)<br>PART<br>NUMBER | DESCRIPTION         | USABLE ON CODE | U/M<br>UNIT |
| GROUP 0101 MECHANICAL ASSEMBLY FRONT |                   |             |                             |                    |                       |                     |                |             |
| PANEL A1A1                           |                   |             |                             |                    |                       |                     |                |             |
| 3                                    | 1                 | MDDZZ       |                             | 51190              | 2100-2325-800         | BLOCK,MTG,FRT PNL   | EA             | 6           |
| 3                                    | 2                 | MDDZZ       |                             | 51190              | 1405-2300-501         | PANEL,FRONT STRL    | EA             | 1           |
| 3                                    | 3                 | MDDZZ       |                             | 51190              | 2403-2377-901         | OVERLAY,FRT PANEL   | EA             | 1           |
| 3                                    | 4                 | PAHZZ       |                             | 65092              | 20044005-005          | METER,DEVN/POWER    | EA             | 1           |
| 3                                    | 5                 | PAHZZ       |                             | 65092              | 20871172-001          | BEZEL,INSTRUMENT MO | EA             | 2           |
| 3                                    | 6                 | PAHZZ       |                             | 00303              | BEPB-BLACK            | LIGHT,INDICATOR     | EA             | 5           |
| 3                                    | 7                 | PAHZZ       | 6240-00-878-1965            | 92966              | 680                   | LAMP,INCANDESCENT   | EA             | 5           |
| 3                                    | 8                 | PAHZZ       | 6210-00-378-3727            | 00303              | ABP                   | LENS,LIGHT          | EA             | 1           |
| 3                                    | 9                 | PAHZZ       | 6210-00-378-3695            | 00303              | GBP                   | LENS,LIGHT          | EA             | 4           |
| 3                                    | 10                | PAHZZ       |                             | 70903              | RA2.310NYL            | CONNECTOR           | EA             | 1           |
| 3                                    | 11                | PAHZZ       | 5940-00-500-7227            | 74868              | 31-759                | TERMINAL,LUG        | EA             | 1           |
| 3                                    | 12                | PAHZZ       | 5935-00-853-7596            | 81349              | M39012/21-0002        | CONNECTOR,RECEPTACL | EA             | 1           |
| 3                                    | 13                | PAHZZ       | 5305-00-054-6661            | 96906              | MS51957-37            | SCREW,MACHINE       | EA             | 2           |
| 3                                    | 14                | XDHZZ       |                             | 51190              | 2406-2301-500         | BEZEL,CRT           | EA             | 1           |
| 3                                    | 15                | PAHZZ       | 5305-00-770-2533            | 96906              | MS51959-13            | SCREW,MACHINE       | EA             | 2           |
| 3                                    | 16                | MDDZZ       |                             | 51190              | 2100-2334-400         | BLOCK,MTG FRT PNL   | EA             | 1           |
| 3                                    | 17                | PAHZZ       |                             | 19505              | 4-70-36               | ADAPTER,CONNECTOR   | EA             | 4           |
| 3                                    | 18                | PAHZZ       |                             | 73906              | 20044005-004          | METER,FREQ ERROR    | EA             | 1           |



EL8AN004

Figure 4. Mechanical Assembly Front Panel A1A1, Rear View.

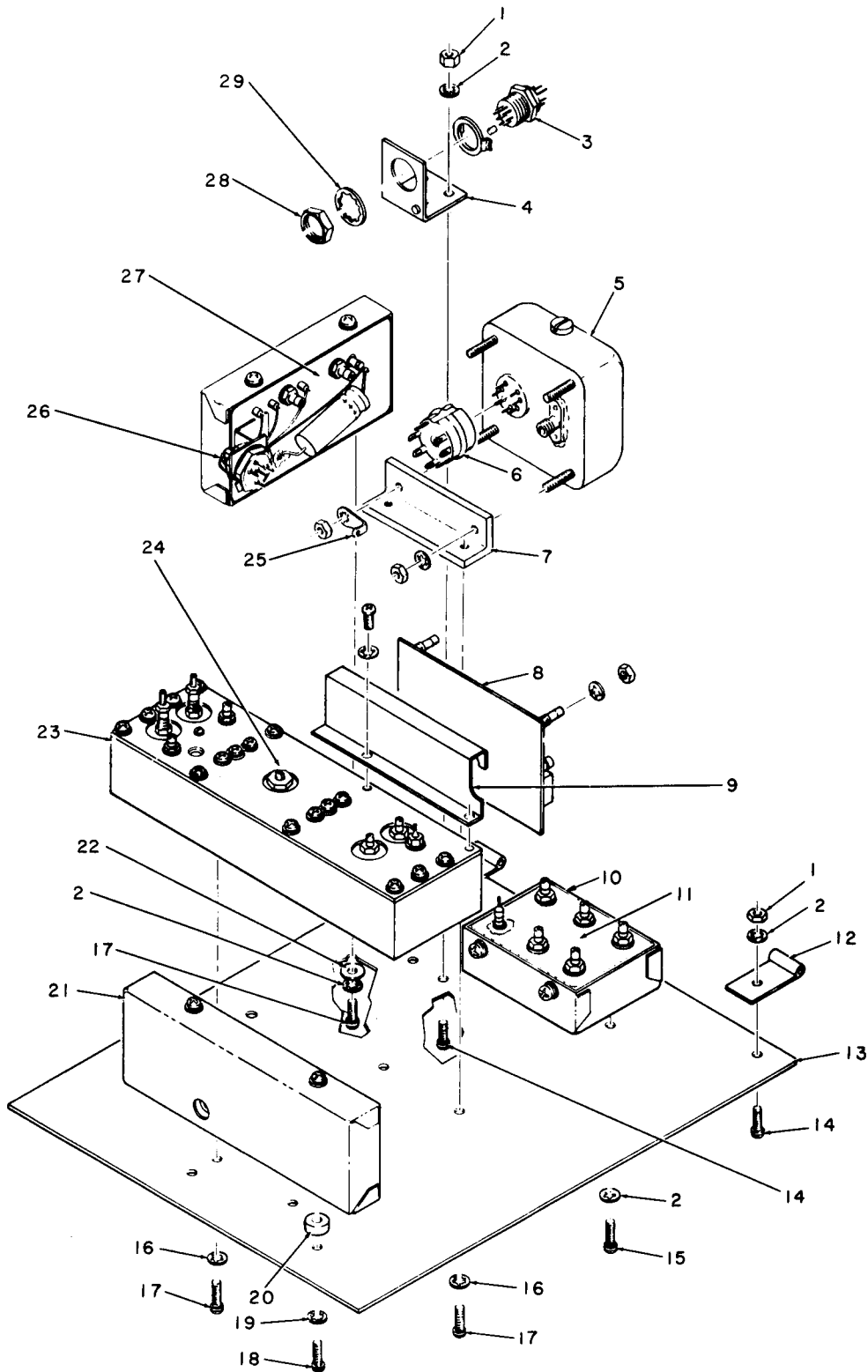
| SECTION II<br>(1)<br>ILLUSTRATION |                   | TM11-6625-3016-24P |                                    |             |                       |                       |                | (7) | (8)                      |
|-----------------------------------|-------------------|--------------------|------------------------------------|-------------|-----------------------|-----------------------|----------------|-----|--------------------------|
| (A)<br>FIG<br>NO                  | (B)<br>ITEM<br>NO | (2)<br>SMR<br>CODE | (3)<br>NATIONAL<br>STOCK<br>NUMBER | (4)<br>FSCM | (5)<br>PART<br>NUMBER | (6)<br>DESCRIPTION    | USABLE ON CODE | U/M | QTY<br>INC<br>IN<br>UNIT |
| 4                                 | 1                 | PAHZZ              | 5930-01-036-1112                   | 81073       | 51CD30-01-1AJN        | SWITCH, ROTARY        |                | EA  | 1                        |
| 4                                 | 2                 | PAHZZ              |                                    | 51190       | 4756-0000-010         | RESISTOR, VARIABLE, W |                | EA  | 1                        |
| 4                                 | 3                 | PAHZZ              | 5935-00-539-1192                   | 82389       | 12B                   | JACK, TELEPHONE       |                | EA  | 1                        |
| 4                                 | 4                 | PAHZZ              | 5930-01-057-1686                   | 09353       | 7301SYZQE             | SWITCH, TOGGLE        |                | EA  | 1                        |
| 4                                 | 5                 | PAHZZ              |                                    | 83330       | 1468-1/4              | LUG, GND              |                | EA  | 7                        |
| 4                                 | 6                 | PAHZZ              |                                    | 51190       | 4750-7617-800         | RESISTOR, VARIABLE, W |                | EA  | 1                        |
| 4                                 | 7                 | PAHZZ              |                                    | 51190       | 4750-7617-100         | RESISTOR, VARIABLE, W |                | EA  | 1                        |
| 4                                 | 8                 | PAHZZ              | 5935-00-192-4789                   | 81349       | M641/12-1             | JACK, TELEPHONE       |                | EA  | 1                        |
| 4                                 | 9                 | PAHZZ              | 5930-01-029-2802                   | 09353       | 7101SYZQ              | SWITCH, ELECTRICAL    |                | EA  | 3                        |
| 4                                 | 10                | MDDZZ              |                                    | 51190       | 1400-2303-200         | BRACKET, MTG, VRES    |                | EA  | 1                        |
| 4                                 | 11                | PAHZZ              |                                    | 51190       | 4750-7616-800         | RESISTOR, VARIABLE, W |                | EA  | 1                        |
| 4                                 | 12                | PAHZZ              | 5930-00-112-4266                   | 09353       | 7211SYZQ              | SWITCH, TOGGLE        |                | EA  | 2                        |
| 4                                 | 13                | PAHZZ              | 5310-00-938-2013                   | 96906       | MS35649-224           | NUT, PLAIN, HEXAGON   |                | EA  | 2                        |
| 4                                 | 14                | PAHZZ              |                                    | 96906       | MS35233-131           | WASHER, LOCK          |                | EA  | 2                        |
| 4                                 | 15                | XADZZ              |                                    | 79963       | 75                    | TERMINAL, LUG         |                | EA  | 3                        |
| 4                                 | 16                | PAHZZ              |                                    | 09353       | 7207J12Q3             | SWITCH, TOGGLE        |                | EA  | 1                        |
| 4                                 | 17                | PAHZZ              |                                    | 51190       | 2800-7600-139         | SPACER                |                | EA  | 2                        |
| 4                                 | 18                | PAHZZ              |                                    | 09353       | 7213SYZQ              | SWITCH, TOGGLE        |                | EA  | 1                        |
| 4                                 | 19                | PAHZZ              |                                    | 51190       | 2840-7600-208         | WASHER                |                | EA  | 1                        |
| 4                                 | 20                | PAHZZ              | 5905-00-539-2994                   | 81349       | RV6NAYS254A           | RESISTOR, VARIABLE, N |                | EA  | 1                        |
| 4                                 | 21                | PAHZZ              |                                    | 51190       | 2840-7600-205         | WASHER                |                | EA  | 1                        |
| 4                                 | 22                | PAHZZ              |                                    | 51190       | 5119-7618-100         | SWITCH, ROTARY        |                | EA  | 1                        |
| 4                                 | 23                | XADDD              |                                    | 51190       | 7007-2377-800         | WIRING HARNESS ASSY   |                | EA  | 1                        |



EL8AN005

Figure 5. Wire Harness Assembly Front Panel A1A1A1.

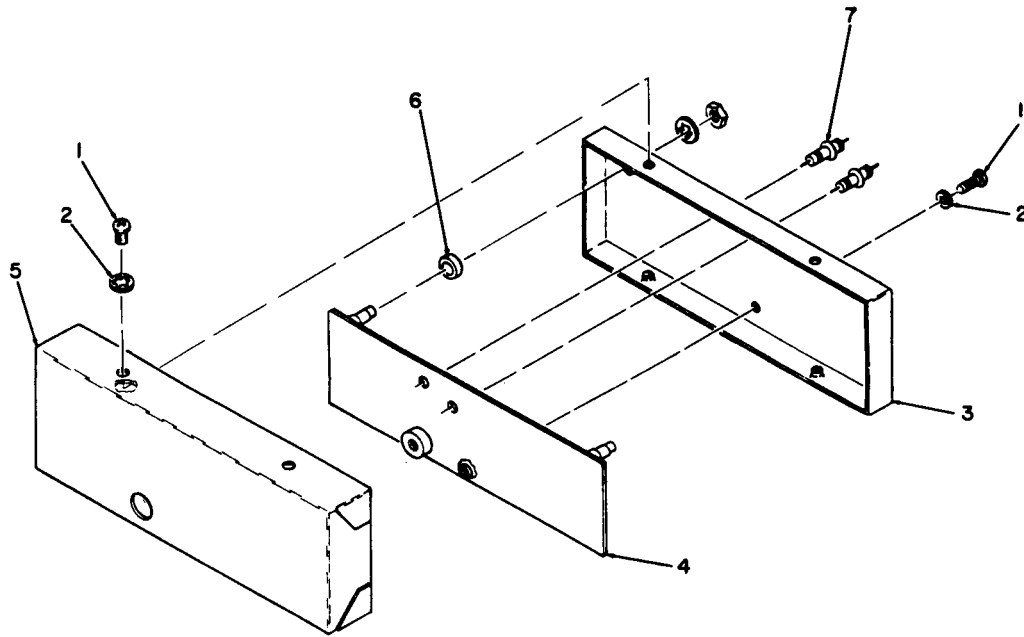
| SECTION II<br>(1)<br>ILLUSTRATION |                   | (2)         | (3)                         | TM11-6625-3016-24P |                 | (6)                                      | (7)            | (8)                      |
|-----------------------------------|-------------------|-------------|-----------------------------|--------------------|-----------------|--|----------------|--------------------------|
| (A)<br>FIG<br>NO                  | (B)<br>ITEM<br>NO | SMR<br>CODE | NATIONAL<br>STOCK<br>NUMBER | FSCM               | PART<br>NUMBER  | DESCRIPTION                              | USABLE ON CODE | QTY<br>INC<br>IN<br>UNIT |
|                                   |                   |             |                             |                    |                 | GROUP 010101 WIRE HARNESS ASSEMBLY FRONT |                |                          |
|                                   |                   |             |                             |                    |                 | PANEL A1A1A1                             |                |                          |
| 5                                 | 1                 | PADZZ       |                             | 27264              | 08-50-0114      | CONTACT, ELECTRICAL                      | EA             | 14                       |
| 5                                 | 2                 | PADZZ       | 5999-01-083-0891            | 00779              | 66506-9         | CONTACT, ELECTRICAL                      | EA             | 15                       |
| 5                                 | 3                 | PADZZ       |                             | 31157              | 22-01-2151      | CONNECTOR                                | EA             | 1                        |
| 5                                 | 4                 | PADZZ       | 5999-01-088-4121            | 00779              | 66504-3         | CONTACT, ELECTRICAL                      | EA             | 3                        |
| 5                                 | 5                 | PADZZ       | 5999-01-075-7360            | 00779              | 66505-9         | CONTACT, ELECTRICAL                      | EA             | 5                        |
| 5                                 | 6                 | PADZZ       | 5305-01-034-3993            | 18342              | 205980-1        | RETAINER KIT, SCREW                      | EA             | 8                        |
| 5                                 | 7                 | PADZZ       | 5935-00-032-9560            | 96214              | 539409-4        | CONNECTOR BODY, RECE                     | EA             | 1                        |
| 5                                 | 8                 | PADZZ       | 5935-00-910-5086            | 95238              | C9-20SGDVS38C   | CONNECTOR, PLUG, ELEC                    | EA             | 2                        |
| 5                                 | 9                 | PADZZ       | 5935-00-912-2331            | 18876              | 9986606         | CONNECTOR, PLUG, ELEC                    | EA             | 1                        |
| 5                                 | 10                | PADZZ       | 5935-01-013-7223            | 00779              | 205210-1        | CONNECTOR BODY, RECE                     | EA             | 2                        |
| 5                                 | 11                | PADZZ       | 5935-00-032-9564            | 96214              | 539409-3        | CONNECTOR BODY, RECE                     | EA             | 1                        |
| 5                                 | 12                | PADZZ       | 5935-00-258-1924            | 81312              | M5SLSH19C       | CONNECTOR, PLUG, ELEC                    | EA             | 1                        |
| 5                                 | 13                | PADZZ       |                             | 18342              | 66506-3         | CONTACT, ELECTRICAL                      | EA             | 24                       |
| 5                                 | 14                | PADZZ       |                             | 18342              | 66507-3         | CONTACT, ELECTRICAL                      | EA             | 43                       |
| 5                                 | 15                | PADZZ       | 5961-00-938-1135            | 81349              | JAN1N4148       | SEMICONDUCTOR DEVIC                      | EA             | 2                        |
| 5                                 | 16                | PADZZ       |                             | 88124              | NLW500-6        | CAPACITOR, FIXED ELE                     | EA             | 1                        |
| 5                                 | 17                | PADZZ       | 5905-00-106-3666            | 81349              | RCR07G103JS     | RESISTOR, FIXED, COMP                    | EA             | 2                        |
| 5                                 | 18                | PADZZ       | 5905-00-114-0710            | 81349              | RCR07G331JS     | RESISTOR, FIXED, COMP                    | EA             | 1                        |
| 5                                 | 19                | PADZZ       | 5905-00-498-6053            | 28480              | 0684-2231       | RESISTOR, FIXED, COMP                    | EA             | 1                        |
| 5                                 | 20                | PADZZ       | 5905-00-487-8874            | 28480              | 0684-1211       | RESISTOR, FIXED, COMP                    | EA             | 1                        |
| 5                                 | 21                | PADZZ       |                             | 27735              | PE13-.047-80-20 | CAPACITOR, FIXED, PLA                    | EA             | 1                        |



EL8AN006

Figure 6. Mechanical Assembly Upper Floor A1A3.

| SECTION II<br>(1)<br>ILLUSTRATION    |                   | (2)         | (3)                         | TM11-6625-3016-24P |                       | (6)                  | (7)            | (8)         |
|--------------------------------------|-------------------|-------------|-----------------------------|--------------------|-----------------------|----------------------|----------------|-------------|
| (A)<br>FIG<br>NO                     | (B)<br>ITEM<br>NO | SMR<br>CODE | NATIONAL<br>STOCK<br>NUMBER | (4)<br>FSCM        | (5)<br>PART<br>NUMBER | DESCRIPTION          | USABLE ON CODE | U/M<br>UNIT |
| GROUP 0102 MECHANICAL ASSEMBLY UPPER |                   |             |                             |                    |                       |                      |                |             |
| FLOOR,ALA3                           |                   |             |                             |                    |                       |                      |                |             |
| 6                                    | 1                 | PADZZ       | 5310-00-934-9748            | 96906              | MS35649-244           | NUT,PLAIN,HEXAGON    | EA             | 2           |
| 6                                    | 2                 | PADZZ       | 5310-00-193-7577            | 96906              | MS35333-36            | WASHER,LOCK          | EA             | 2           |
| 6                                    | 3                 | PADZZ       | 5935-00-903-9778            | 95238              | C9-20PVRNGD           | CONNECTOR,RECEPTACL  | EA             | 1           |
| 6                                    | 4                 | XDDZZ       |                             | 51190              | 1400-2341-000         | BRACKET,MTG          | EA             | 1           |
| 6                                    | 5                 | PAHZZ       | 6625-01-108-0951            | 51190              | 5850-0000-010         | TXCO REF OSC         | EA             | 1           |
| 6                                    | 6                 | PAHZZ       |                             | 00629              | 8578                  | SOCKET,PLUG-IN,ELEC  | EA             | 1           |
| 6                                    | 7                 | XDHZZ       |                             | 51190              | 1400-2364-800         | BRACKET,MTG          | EA             | 1           |
| 6                                    | 8                 | PAHZZ       |                             | 51190              | 7010-2368-600         | CIRCUIT CARD ASSEMB  | EA             | 1           |
| 6                                    | 9                 | MDDZZ       |                             | 51190              | 1400-2369-400         | BRACKET,MTG          | EA             | 1           |
| 6                                    | 10                | PAHZZ       | 6625-01-108-0968            | 51190              | 7014-2362-000         | TXCO DIST AMPLIFIER  | EA             | 1           |
| 6                                    | 11                | XADZZ       |                             | 51190              | 7010-2361-900         | PRINTED CKT BD ASSY  | EA             | 1           |
| 6                                    | 12                | XDHZZ       |                             | 51190              | 2832-2317-000         | HINGE                | EA             | 2           |
| 6                                    | 13                | XDHZZ       |                             | 51190              | 2506-2360-800         | FLOOR                | EA             | 1           |
| 6                                    | 14                | PAHZZ       | 5305-00-054-6661            | 96906              | MS51957-37            | SCREW,MACHINE        | EA             | 2           |
| 6                                    | 15                | PAHZZ       | 5305-00-054-5653            | 96906              | MS51957-19            | SCREW,MACHINE        | EA             | 4           |
| 6                                    | 16                | XAHZZ       |                             | 96906              | MS35333-36            | WASHER,LOCK          | EA             | 6           |
| 6                                    | 17                | XAHZZ       |                             | 96906              | MS51957-37            | SCREW,MACHINE        | EA             | 4           |
| 6                                    | 18                | XAHZZ       |                             | 96906              | MS51957-37            | SCREW,MACHINE        | EA             | 4           |
| 6                                    | 19                | PAHZZ       |                             | 96906              | MS35233-131           | WASHER,LOCK          | EA             | 4           |
| 6                                    | 20                | XAHZZ       |                             | 51190              | 2800-7600-161         | SPACER               | EA             | 2           |
| 6                                    | 21                | PAHZZ       | 6625-01-108-0965            | 51190              | 7024-2322-500         | HET AMP 2PRESICAL AY | EA             | 1           |
| 6                                    | 22                | XAHZZ       |                             | 96906              | MS27183-4             | WASHER,FLAT          | EA             | 2           |
| 6                                    | 23                | PAHZZ       | 6625-01-108-0957            | 51190              | 7025-2356-000         | VCO                  | EA             | 1           |
| 6                                    | 24                | XADZZ       |                             | 51190              | 7010-2355-900         | PRINTED CKT BD ASSY  | EA             | 1           |
| 6                                    | 25                | PADZZ       | 5940-00-156-7196            | 96906              | MS77072-2             | TERMINAL,LUG         | EA             | 1           |
| 6                                    | 26                | PAHZZ       | 6625-01-108-0963            | 51190              | 7026-2321-700         | CLOCK DIVIDER        | EA             | 1           |
| 6                                    | 27                | XADZZ       |                             | 51190              | 7010-2309-300         | PRINTED CKT BD ASSY  | EA             | 1           |
| 6                                    | 28                | PAHZZ       | 5310-00-934-9761            | 96906              | MS35649-264           | NUT,PLAIN,HEXAGON    | EA             | 2           |
| 6                                    | 29                | PAHZZ       |                             | 96906              | MS35333-131           | WASHER,LOCK          | EA             | 1           |

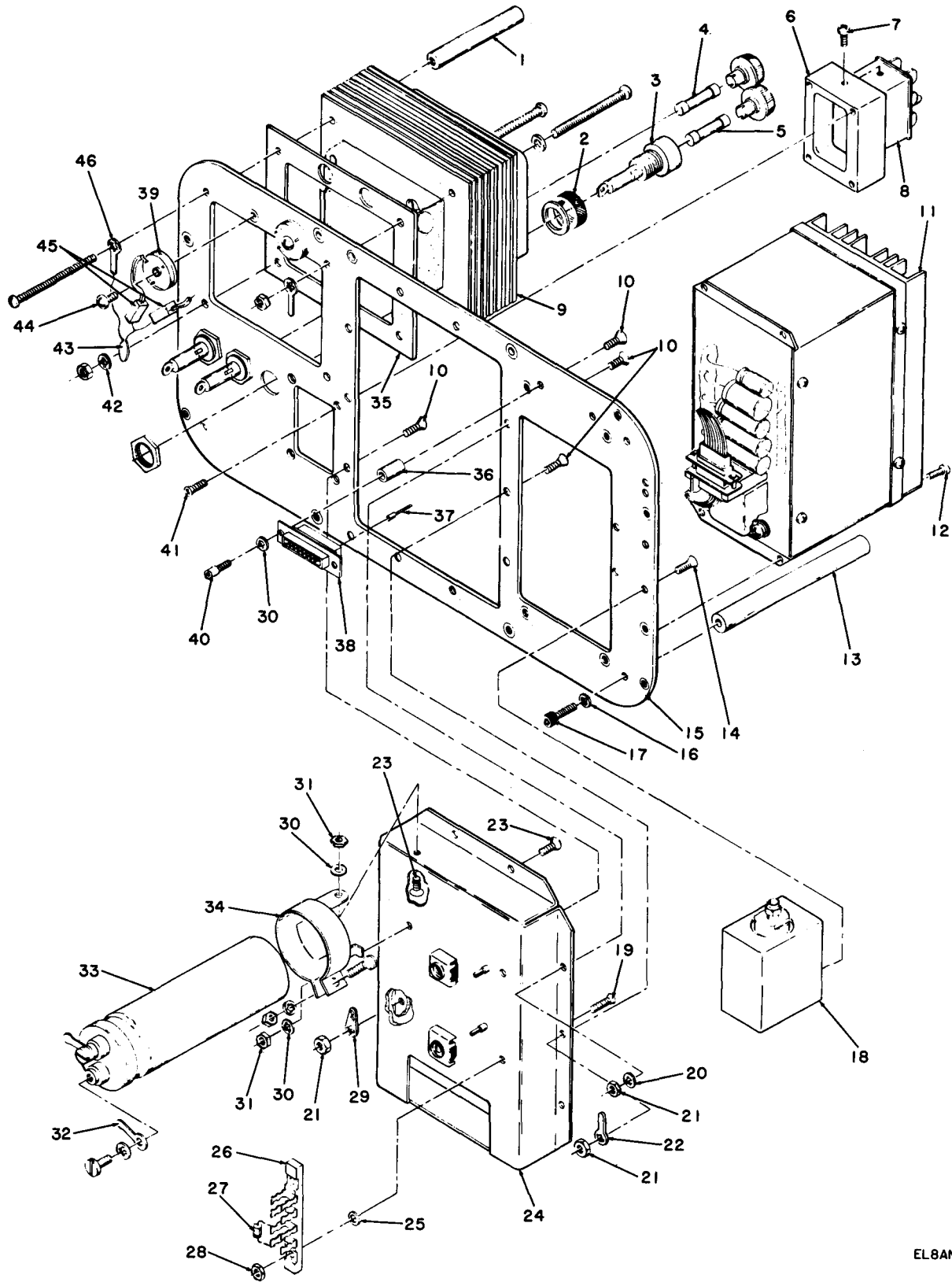


ELBAN007

Figure 7. Mechanical Assembly Het Amp 2 Prescaler A1A3A1.



| SECTION II<br>(1)<br>ILLUSTRATION         |                   | (2)         | (3)                         | TM11-6625-3016-24P |                       | (6)                 | (7)            | (8) |
|---|-------------------|-------------|-----------------------------|--------------------|-----------------------|---------------------|----------------|-----|
| (A)<br>FIG<br>NO                          | (B)<br>ITEM<br>NO | SMR<br>CODE | NATIONAL<br>STOCK<br>NUMBER | (4)<br>FSCM        | (5)<br>PART<br>NUMBER | DESCRIPTION         | USABLE ON CODE | U/M |
| GROUP 010202 MECHANICAL ASSEMBLY, HET AMP |                   |             |                             |                    |                       |                     |                |     |
| 2 PRESCALER, A1A3A1                       |                   |             |                             |                    |                       |                     |                |     |
| 7   | 1                 | PAHZZ       | 5305-00-054-5644            | 96906              | MS51957-11            | SCREW, MACHINE      | EA             | 1   |
| 7   | 2                 | PAHZZ       |                             | 96906              | MS35233-131           | WASHER, LOCK        | EA             | 1   |
| 7   | 3                 | PAHZZ       |                             | 51190              | 1415-2314-801         | COVER, BOTTOM       | EA             | 1   |
| 7   | 4                 | XAHZZ       |                             | 51190              | 7010-2368-400         | PRINTED CKT BD ASSY | EA             | 1   |
| 7   | 5                 | XAHZZ       |                             | 51190              | 1415-2314-802         | COVER, TOP          | EA             | 1   |
| 7   | 6                 | XAHZZ       |                             | 51190              | 2800-7600-154         | SPACER              | EA             | 2   |
| 7   | 7                 | XAHZZ       |                             | 33095              | 51-713-002            | FILTER, FEEDTHRU    | EA             | 2   |



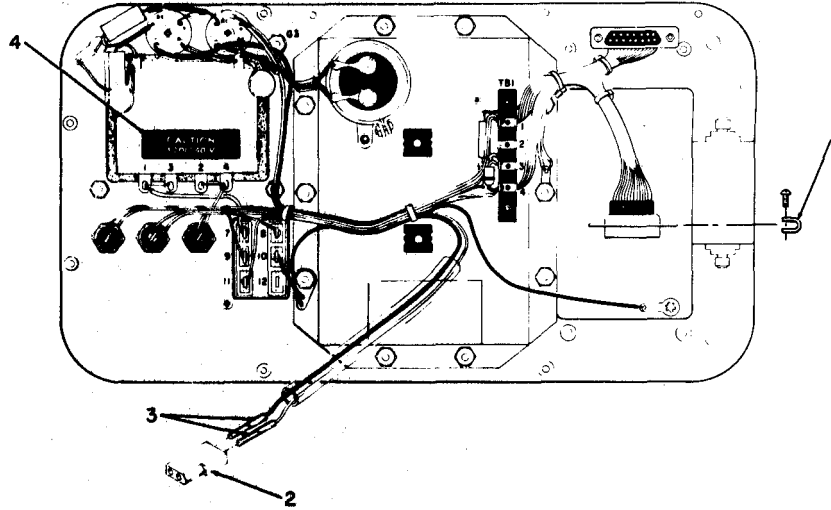
EL8AN008

Figure 8. Mechanical Assembly Rear Panel A1A3.

| SECTION II<br>(1)<br>ILLUSTRATION<br>(A) (B)<br>FIG ITEM<br>NO NO |    | (2)<br>SMR<br>CODE | (3)<br>NATIONAL<br>STOCK<br>NUMBER | TM11-6625-3016-24P<br>(4) (5)<br>FSCM PART<br>NUMBER |                             | (6)<br>DESCRIPTION    | (7)<br>USABLE ON CODE U/M | (8)<br>QTY<br>INC<br>IN<br>UNIT |
|---|----|--------------------|------------------------------------|--|-----------------------------|-----------------------|---------------------------|---------------------------------|
| GROUP 0107 MECHANICAL ASSEMBLY, REAR PANEL                        |    |                    |                                    |  |                             |                       |                           |                                 |
| A1A8  |    |                    |                                    |  |                             |                       |                           |                                 |
| 8   | 1  | MHHZZ              |                                    | 51190  | 1421-2338-100               | SPACER, AL            | EA                        | 1                               |
| 8   | 2  | MHHZZ              |                                    | 51190  | 2800-7600-162               | SPACER, AL            | EA                        | 3                               |
| 8   | 3  | PAHZZ              | 5920-00-892-9311                   | 81349  | FHN26G1                     | FUSEHOLDER, EXTRACTO  | EA                        | 3                               |
| 8   | 4  | PAHZZ              | 5920-00-056-6620                   | 71400  | AGC-7-1/2                   | FUSE, CARTRIDGE       | EA                        | 2                               |
| 8   | 5  | PAHZZ              | 5920-00-156-7375                   | 81349  | F02B250V1-1/4A              | FUSE, CARTRIDGE       | EA                        | 1                               |
| 8   | 6  | MHHZZ              |                                    | 51190  | 1416-2313-600               | BLOCK, MTG            | EA                        | 1                               |
| 8   | 7  | PADZZ              | 5305-00-763-6963                   | 96906  | MS51957-28                  | SCREW, MACHINE        | EA                        | 2                               |
| 8   | 8  | PAHZZ              |                                    | 54492  | P-2406-AB                   | CONNECTOR             | EA                        | 1                               |
| 8   | 9  | PADZZ              |                                    | 54068  | NT-2310                     | TRANSFORMER           | EA                        | 1                               |
| 8   | 10 | PADZZ              | 5305-00-763-6958                   | 96906  | MS51959-24                  | SCREW, MACHINE        | EA                        | 10                              |
| 8   | 11 | PADZZ              | 6625-01-108-0962                   | 51190  | 7023-2338-400               | DUTY CYCLE REGULATED  | EA                        | 1                               |
| 8   | 12 | PADZZ              | 5305-00-054-6649                   | 96906  | MS51957-25                  | SCREW, MACHINE        | EA                        | 4                               |
| 8   | 13 | PADZZ              |                                    | 51190  | 1421-2338-200               | SPACER                | EA                        | 3                               |
| 8   | 14 | PADZZ              | 5305-00-763-6963                   | 96906  | MS51957-28                  | SCREW, MACHINE        | EA                        | 4                               |
| 8   | 15 | MDDZZ              |                                    | 51190  | 1405-2337-901               | PANEL, REAR, STRL     | EA                        | 1                               |
| 8   | 16 | PADZZ              |                                    | 96906  | MS35333-131                 | WASHER, LOCK          | EA                        | 3                               |
| 8   | 17 | PADZZ              | 5305-00-068-5412                   | 96906  | MS16995-4                   | SCREW, CAP, SOCKET HE | EA                        | 3                               |
| 8   | 18 | PADZZ              | 6625-01-109-1669                   | 51190  | 2901-7624-600               | ATTENUATUR            | EA                        | 1                               |
| 8   | 19 | PADZZ              | 5305-00-768-0336                   | 96906  | MS51959-17                  | SCREW, MACHINE        | EA                        | 2                               |
| 8   | 20 | PADZZ              |                                    | 96906  | MS35333-131                 | WASHER, LOCK          | EA                        | 8                               |
| 8   | 21 | PADZZ              | 5310-00-934-9761                   | 96906  | MS35649-264                 | NUT, PLAIN, HEXAGON   | EA                        | 10                              |
| 8   | 22 | PADZZ              | 5940-00-156-7196                   | 96906  | MS77072-2                   | TERMINAL, LUG         | EA                        | 1                               |
| 8   | 23 | PADZZ              | 5305-00-770-2533                   | 96906  | MS51959-13                  | SCREW, MACHINE        | EA                        | 2                               |
| 8   | 24 | PADZZ              |                                    | 51190  | 1414-2311-800               | COVER, BATTERY        | EA                        | 1                               |
| 8   | 25 | PADZZ              | 5310-00-950-1310                   | 96906  | MS27183-4                   | WASHER, FLAT          | EA                        | 2                               |
| 8   | 26 | PADZZ              | 5940-00-204-8225                   | 71785  | 4-170                       | TERMINAL BOARD        | EA                        | 1                               |
| 8   | 27 | PADZZ              |                                    | 22229  | NS2001                      | SEMICONDUCTOR DEVIC   | EA                        | 1                               |
| 8   | 28 | PADZZ              | 5310-00-934-9739                   | 96906  | MS35649-242                 | NUT, PLAIN, HEXAGON   | EA                        | 2                               |
| 8   | 29 | PADZZ              | 5940-00-156-7345                   | 96906  | MS77067-2                   | TERMINAL, LUG         | EA                        | 1                               |
| 8   | 30 | PADZZ              | 5310-00-193-7577                   | 96906  | MS35333-36                  | WASHER, LOCK          | EA                        | 2                               |
| 8   | 31 | PADZZ              | 5310-00-934-9748                   | 96906  | MS35649-244                 | NUT, PLAIN, HEXAGON   | EA                        | 2                               |
| 8   | 32 | PADZZ              | 5940-00-156-7373                   | 96906  | MS77074-6                   | TERMINAL, LUG         | EA                        | 2                               |
| 8   | 33 | PADZZ              | 5910-01-079-7273                   |  | CGS-133U025R4C3P<br>90201 H | CAPACITOR, FIXED, ELE | EA                        | 1                               |
| 8   | 34 | PADZZ              |                                    | 51190  | 2109-7616-700               | CLAMP                 | EA                        | 1                               |
| 8   | 35 | PADZZ              |                                    | 51190  | 2100-2335-900               | PLATE, MOUNTING, TRAN | EA                        | 1                               |
| 8   | 36 | PADZZ              |                                    | 51190  | 2800-7600-138               | SPACER                | EA                        | 2                               |
| 8   | 37 | PADZZ              | 5999-01-088-4121                   | 00779  | 66504-3                     | CONTACT, ELECTRICAL   | EA                        | 30                              |

| SECTION II   |      | TM11-6625-3016-24P |                  |        |               |                |      |   |
|--------------|------|--------------------|------------------|--------|---------------|----------------|------|---|
| (1)          | (2)  | (3)                | (4)              | (5)    | (6)           | (7)            | (8)  |   |
| ILLUSTRATION |      |                    |                  |        | DESCRIPTION   |                | QTY  |   |
| (A)          | (B)  | NATIONAL           |                  | PART   |               |                | INC  |   |
| FIG          | ITEM | STOCK              | FSCM             | NUMBER |               | USABLE ON CODE | IN   |   |
| NO           | NO   | NUMBER             |                  |        |               |                | UNIT |   |
| 8            | 38   | PADZZ              | 5935-00-032-9560 | 96214  | 539409-4      |                | EA   | 2 |
| 8            | 39   | PADZZ              | 5961-01-103-5607 | 83701  | PK-10         |                | EA   | 2 |
| 8            | 40   | PADZZ              |                  | 51190  | 2850-7601-301 |                | EA   | 2 |
| 8            | 41   | PAHZZ              | 5305-00-770-2579 | 96906  | MS51959-15    |                | EA   | 4 |
| 8            | 42   | PAHZZ              | 5310-00-019-0676 | 96906  | MS35333-109   |                | EA   | 2 |
| 8            | 43   | PADZZ              | 5910-00-577-1138 | 99942  | DD103         |                | EA   | 2 |
| 8            | 44   | PADZZ              | 5305-00-054-5649 | 96906  | MS51957-15    |                | EA   | 4 |
| 8            | 45   | PADZZ              |                  | 97137  | PW-5-.1-10    |                | EA   | 2 |
| 8            | 46   | PADZZ              |                  | 83330  | 1411-8        |                | EA   | 2 |

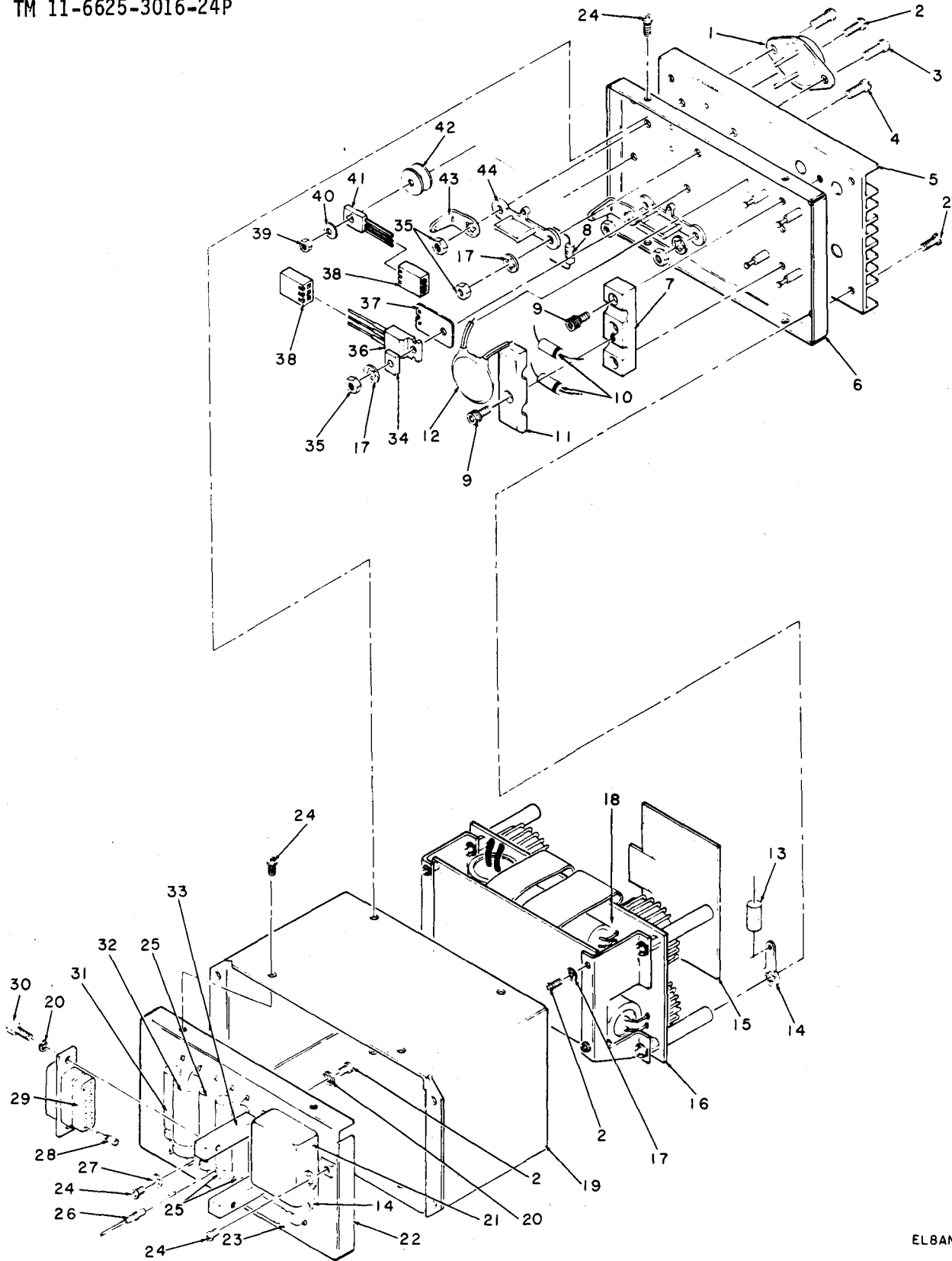




EL8AN009

Figure 9. Mechanical Assembly Rear Panel A1A3, Overall I View.

| SECTION II<br>(1)<br>ILLUSTRATION |                   | TM11-6625-3016-24P |                                    |             |                       | (6)<br>DESCRIPTION  | (7)<br>USABLE ON CODE | (8)<br>QTY<br>INC<br>IN<br>UNIT |
|-----------------------------------|-------------------|--------------------|------------------------------------|-------------|-----------------------|---------------------|-----------------------|---------------------------------|
| (A)<br>FIG<br>NO                  | (B)<br>ITEM<br>NO | (2)<br>SMR<br>CODE | (3)<br>NATIONAL<br>STOCK<br>NUMBER | (4)<br>FSCM | (5)<br>PART<br>NUMBER |                     |                       |                                 |
| 9                                 | 1                 | PADZZ              | 5305-01-034-3993                   | 18342       | 205980-1              | RETAINER KIT,SCREW  | EA                    | 1                               |
| 9                                 | 2                 | PADZZ              |                                    | 31157       | 03-09-1022            | CONNECTOR,RECEPTACL | EA                    | 1                               |
| 9                                 | 3                 | PADZZ              | 5999-00-624-9397                   | 27264       | 02-09-1103            | CONTACT,ELECTRICAL  | EA                    | 2                               |
| 9                                 | 4                 | PADZZ              |                                    | 51190       | 2400-8002-000         | LABEL,CAUTION       | EA                    | 1                               |



EL8ANO 10

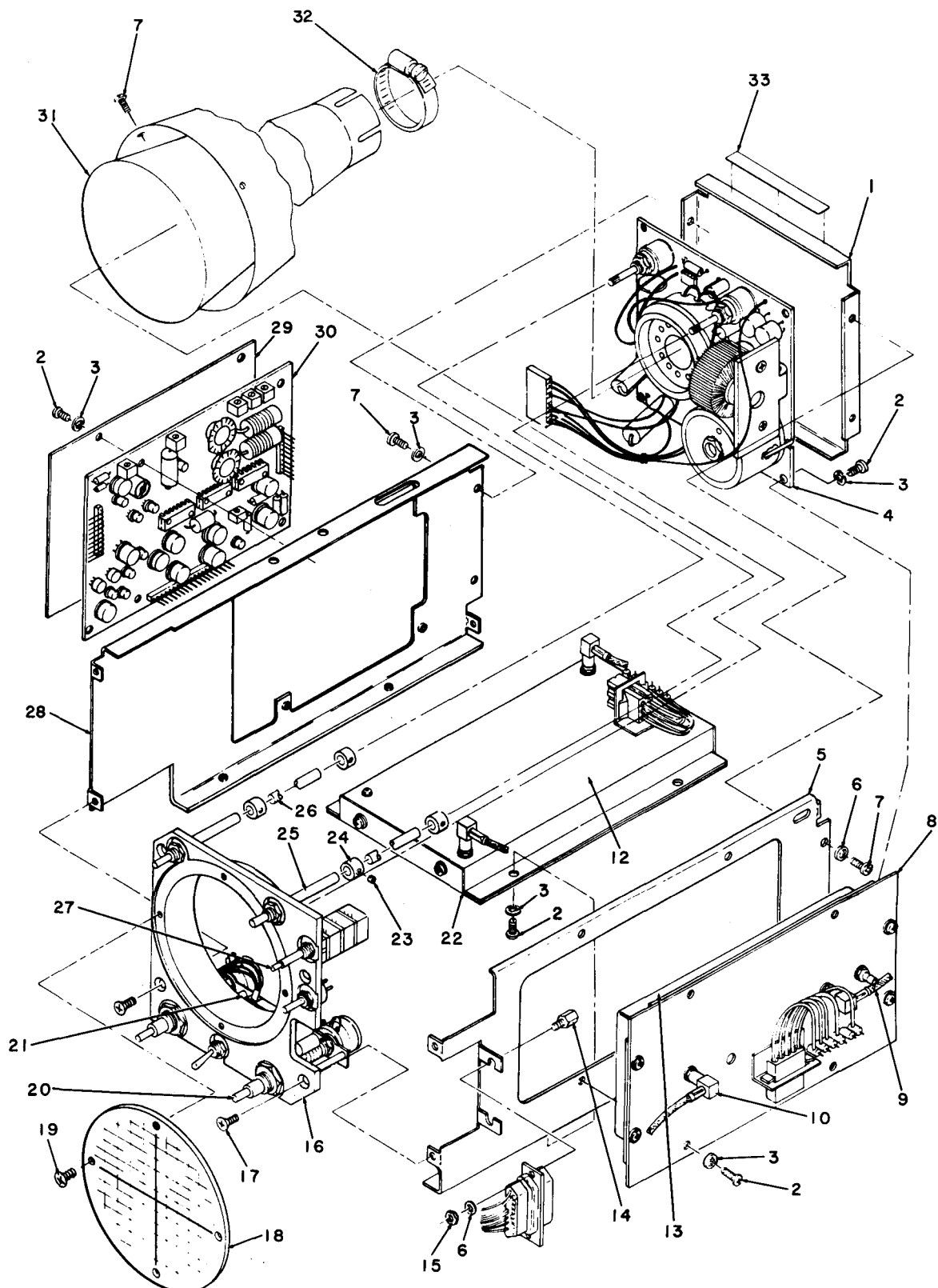
Figure 10. Mechanical Assembly Duty Cycle Regulator A1A8A1.



| SECTION II<br>(1)<br>ILLUSTRATION<br>(A) (B)<br>FIG ITEM<br>NO NO |    | (2)<br>SMR<br>CODE | (3)<br>NATIONAL<br>STOCK<br>NUMBER | TM11-6625-3016-24P<br>(4) (5)<br>FSCM PART<br>NUMBER |               | (6)<br>DESCRIPTION    | (7)<br>USABLE ON CODE U/M | (8)<br>QTY<br>INC<br>IN<br>UNIT |
|---|----|--------------------|------------------------------------|--|---------------|-----------------------|---------------------------|---------------------------------|
| GROUP 010701 MECHANICAL ASSEMBLY, DUTY                            |    |                    |                                    |  |               |                       |                           |                                 |
| CYCLE REGULATOR A1A8A1  |    |                    |                                    |  |               |                       |                           |                                 |
| 10  | 1  | PADZZ              | 5961-01-007-2231                   | 80131  | 2N5879        | TRANSISTOR            | EA                        | 2                               |
| 10  | 2  | PADZZ              | 5305-00-054-5644                   | 96906  | MS51957-11    | SCREW, MACHINE        | EA                        | 4                               |
| 10  | 3  | PADZZ              | 5305-00-054-6653                   | 96906  | MS51957-29    | SCREW, MACHINE        | EA                        | 4                               |
| 10  | 4  | PADZZ              |                                    | 51190  | 2804-0375-051 | SCREW, MACHINE        | EA                        | 1                               |
| 10  | 5  | MDDZZ              |                                    | 51190  | 2506-2337-500 | HEAT SINK             | EA                        | 1                               |
| 10  | 6  | MDDZZ              |                                    | 51190  | 1414-2337-600 | COVER                 | EA                        | 1                               |
| 10  | 7  | MDDZZ              |                                    | 51190  | 5400-2378-500 | HEAT SINK             | EA                        | 1                               |
| 10  | 8  | PADZZ              | 5905-00-477-1419                   | 01121  | CB1501        | RESISTOR, FIXED, COMP | EA                        | 1                               |
| 10  | 9  | PADZZ              | 5305-00-068-5276                   | 96906  | MS16995-9     | SCREW, CAP, SOCKET HE | EA                        | 3                               |
| 10  | 10 | PADZZ              |                                    | 83701  | RWB020A       | SEMICONDUCTOR DEVIC   | EA                        | 2                               |
| 10  | 11 | MDDZZ              |                                    | 51190  | 5400-2378-600 | HEAT SINK             | EA                        | 1                               |
| 10  | 12 | PADZZ              | 5910-00-577-1138                   | 99942  | DD103         | CAPACITOR, FIXED, CER | EA                        | 1                               |
| 10  | 13 | PADZZ              |                                    | 27735  | MPC13-1-50-5  | CAPACITOR, FIXED, MET | EA                        | 1                               |
| 10  | 14 | PADZZ              | 5940-00-204-9158                   | 96906  | MS77072-1     | TERMINAL, LUG         | EA                        | 2                               |
| 10  | 15 | MDDZZ              |                                    | 51190  | 3107-2354-500 | INSULATOR             | EA                        | 1                               |
| 10  | 16 | PADZZ              |                                    | 51190  | 7010-2334-900 | CIRCUIT CARD ASSEMB   | EA                        | 1                               |
| 10  | 17 | PADZZ              |                                    | 96906  | MS35333-131   | WASHER, LOCK          | EA                        | 4                               |
| 10  | 18 | XADZZ              |                                    | 51190  | 7010-2309-000 | PRINTED CKT BD ASSY   | EA                        | 1                               |
| 10  | 19 | XDDZZ              |                                    | 51190  | 1414-2337-700 | COVER                 | EA                        | 1                               |
| 10  | 20 | PADZZ              | 5310-00-782-1349                   | 96906  | MS15795-804   | WASHER, FLAT          | EA                        | 2                               |
| 10  | 21 | PADZZ              |                                    | 32640  | 93G83-4-X-65  | RELAY                 | EA                        | 1                               |
| 10  | 22 | MDDZZ              |                                    | 51190  | 2506-2337-800 | COVER                 | EA                        | 1                               |
| 10  | 23 | PADZZ              | 5910-00-060-9391                   | 14655  | NLW50-50      | CAPACITOR, FIXED, ELE | EA                        | 1                               |
| 10  | 24 | PADZZ              | 5305-00-764-2966                   | 96906  | MS51959-2     | SCREW, MACHINE        | EA                        | 4                               |
| 10  | 25 | PADZZ              | 5910-01-112-0835                   | 90201  | TT25X300A     | CAPACITOR, FIXED, ELE | EA                        | 3                               |
| 10  | 26 | PADZZ              | 5915-00-116-6571                   | 33095  | 51-708-001    | FILTER, RADIO FREQUE  | EA                        | 6                               |
| 10  | 27 | PADZZ              | 5310-00-782-1349                   | 96906  | MS15795-804   | WASHER, FLAT          | EA                        | 1                               |
| 10  | 28 | PADZZ              | 5999-01-083-0891                   | 00779  | 66506-9       | CONTACT, ELECTRICAL   | EA                        | 15                              |
| 10  | 29 | PADZZ              | 5935-00-032-9564                   | 96214  | 539409-3      | CONNECTOR BODY, RECE  | EA                        | 1                               |
| 10  | 30 | PADZZ              |                                    | 51190  | 2850-7601-301 | SCREW, MACHINE        | EA                        | 2                               |
| 10  | 31 | PADZZ              |                                    | 88124  | NLW500-6      | CAPACITOR, FIXED ELE  | EA                        | 1                               |
| 10  | 32 | PADZZ              | 5910-01-097-2748                   | 90201  | TC1520C       | CAPACITOR, FIED, ELE  | EA                        | 1                               |
| 10  | 33 | PADZZ              |                                    | 51190  | 2813-7618-400 | SPACER                | EA                        | 2                               |
| 10  | 34 | PADZZ              |                                    | 02735  | NR231A        | WASHER                | EA                        | 1                               |
| 10  | 35 | PAHZZ              | 5310-00-934-9761                   | 96906  | MS35649-264   | NUT, PLAIN, HEXAGON   | EA                        | 4                               |
| 10  | 36 | PADZZ              | 5961-01-012-9316                   | 80131  | 2N6109        | TRANSISTOR            | EA                        | 1                               |
| 10  | 37 | PADZZ              |                                    | 02735  | DF1038        | INSULATOR, WASHER     | EA                        | 1                               |
| 10  | 38 | PADZZ              | 5935-01-123-9863                   | 27264  | 10-17-2032    | CONNECTOR             | EA                        | 2                               |

| SECTION II   |      | TM11-6625-3016-24P |                  |        |             |                      |      |   |
|--------------|------|--------------------|------------------|--------|-------------|----------------------|------|---|
| (1)          | (2)  | (3)                | (4)              | (5)    | (6)         | (7)                  | (8)  |   |
| ILLUSTRATION |      |                    |                  |        | DESCRIPTION |                      | QTY  |   |
| (A)          | (B)  | NATIONAL           |                  | PART   |             |                      | INC  |   |
| FIG          | ITEM | STOCK              | FSCM             | NUMBER |             | USABLE ON CODE       | U/M  |   |
| NO           | NO   | NUMBER             |                  |        |             |                      | UNIT |   |
| 10           | 39   | PADZZ              | 5310-00-934-9739 | 96906  | MS35649-242 | NUT, PLAIN, HEXAGON  | EA   | 1 |
| 10           | 40   | PADZZ              | 5310-01-080-9226 | 04713  | B52200F006  | WASHER, SPRING TENS  | EA   | 1 |
| 10           | 41   | PADZZ              | 5961-01-005-6607 | 80131  | 2N5195      | TRANSISTOR           | EA   | 1 |
| 10           | 42   | PADZZ              | 5970-01-103-9859 | 04713  | B52600F003  | INSULATOR, WASHER    | EA   | 2 |
| 10           | 43   | PADZZ              | 5940-00-513-3264 | 83330  | 1410-6      | TERMINAL, LUG        | EA   | 2 |
| 10           | 44   | MDDZZ              |                  | 31223  | PT1-1       | MOUNTING PAD, ELECTR | EA   | 2 |

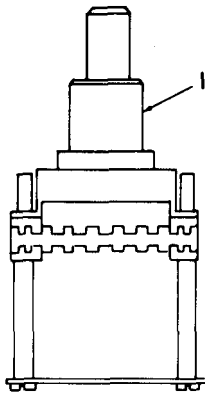




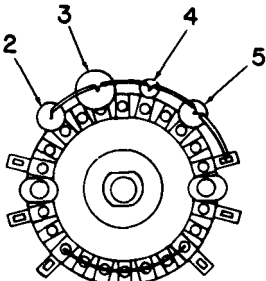
ITEM II IS NOT USED.

Figure 11. Mechanical Assembly Spectrum Analyzer A1A18.

| SECTION II<br>(1)<br>ILLUSTRATION |                   | (2)         | (3)                         | TM11-6625-3016-24P |                       | (6)                                      | (7)            | (8)                      |
|-----------------------------------|-------------------|-------------|-----------------------------|--------------------|-----------------------|--|----------------|--------------------------|
| (A)<br>FIG<br>NO                  | (B)<br>ITEM<br>NO | SMR<br>CODE | NATIONAL<br>STOCK<br>NUMBER | (4)<br>FSCM        | (5)<br>PART<br>NUMBER | DESCRIPTION                              | USABLE ON CODE | U/M<br>INC<br>IN<br>UNIT |
|                                   |                   |             |                             |                    |                       | GROUP 0117 MECHANICAL ASSEMBLY, SPECTRUM |                |                          |
|                                   |                   |             |                             |                    |                       | ANALYZER, A1A18                          |                |                          |
| 11                                | 1                 | PADZZ       |                             | 51190              | 1414-2314-000         | COVER, REAR                              | EA             | 1                        |
| 11                                | 2                 | PADZZ       | 5305-00-054-5653            | 96906              | MS51957-19            | SCREW, MACHINE                           | EA             | 4                        |
| 11                                | 3                 | PADZZ       | 5310-00-193-7577            | 96906              | MS35333-36            | WASHER, LOCK                             | EA             | 2                        |
| 11                                | 4                 | PADZZ       | 6625-01-108-0954            | 51190              | 7010-2362-400         | SCOPE INVERTER BD                        | EA             | 1                        |
| 11                                | 5                 | MDDZZ       |                             | 51190              | 1415-2362-200         | FRAME, SIDE                              | EA             | 1                        |
| 11                                | 6                 | PADZZ       | 5310-00-193-7577            | 96906              | MS35333-36            | WASHER, LOCK                             | EA             | 2                        |
| 11                                | 7                 | PADZZ       | 5305-00-764-2966            | 96906              | MS51959-2             | SCREW, MACHINE                           | EA             | 2                        |
| 11                                | 8                 | PADZZ       | 6625-01-109-1671            | 51190              | 7030-2363-200         | ANALYZER MODULE                          | EA             | 1                        |
| 11                                | 9                 | XADZZ       |                             | 51190              | 6050-0040-720         | COAX ASSY                                | EA             | 1                        |
| 11                                | 10                | PADZZ       |                             | 51190              | 6050-0040-620         | CABLE, RADIO FREQUEN                     | EA             | 1                        |
| 11                                | 12                | XADZZ       |                             | 51190              | 7010-2359-400         | PRINTED CKT BD ASSY                      | EA             | 1                        |
| 11                                | 13                | XADZZ       |                             | 51190              | 7010-2359-300         | PRINTED CKT BD ASSY                      | EA             | 1                        |
| 11                                | 14                | PADZZ       |                             | 51190              | 2850-7601-301         | SCREW, MACHINE                           | EA             | 2                        |
| 11                                | 15                | PADZZ       | 5310-00-934-9739            | 96906              | MS35649-242           | NUT, PLAIN, HEXAGON                      | EA             | 2                        |
| 11                                | 16                | PADZZ       |                             | 51190              | 7028-2366-900         | ANALYZER, SPECTRUM, F                    | EA             | 1                        |
| 11                                | 17                | PADZZ       | 5305-00-770-2533            | 96906              | MS51959-13            | SCREW, MACHINE                           | EA             | 4                        |
| 11                                | 18                | PAHZZ       |                             | 51190              | 2517-2361-700         | GRADICULE                                | EA             | 1                        |
| 11                                | 19                | PAHZZ       | 5305-00-764-2964            | 96906              | MS51959-4             | SCREW, MACHINE                           | EA             | 4                        |
| 11                                | 20                | XADZZ       |                             | 51190              | 7013-2366-700         | MECH ASSY                                | EA             | 1                        |
| 11                                | 21                | PADZZ       |                             | 51190              | 7007-2364-600         | WIRING HARNESS                           | EA             | 1                        |
| 11                                | 22                | PADZZ       | 6625-01-109-1672            | 51190              | 7030-2363-300         | ANALYZER MODULE                          | EA             | 1                        |
| 11                                | 23                | XADZZ       |                             | 96906              | MS51957-11            | SCREW, MACHINE                           | EA             | 4                        |
| 11                                | 24                | XADZZ       |                             | 51190              | 2405-2369-900         | RING, CL                                 | EA             | 4                        |
| 11                                | 25                | XADZZ       |                             | 51190              | 2518-7616-000         | BEARING, PANEL                           | EA             | 2                        |
| 11                                | 26                | XADZZ       |                             | 51190              | 2513-2369-800         | SHAFT                                    | EA             | 2                        |
| 11                                | 27                | XADZZ       |                             | 51190              | 7013-2366-800         | MECH ASSY                                | EA             | 1                        |
| 11                                | 28                | PAHZZ       |                             | 51190              | 1415-2363-100         | FRAME SIDE                               | EA             | 1                        |
| 11                                | 29                | XDHZZ       |                             | 51190              | 3107-2365-300         | INSULATOR                                | EA             | 1                        |
| 11                                | 30                | PADZZ       | 6625-01-108-0955            | 51190              | 7010-2362-500         | SCOPE MAIN BD                            | EA             | 1                        |
| 11                                | 31                | PADZZ       | 5960-00-088-9897            | 81349              | 3RP1A                 | ELECTRON TUBE                            | EA             | 1                        |
| 11                                | 32                | PADZZ       |                             | 30463              | 6620                  | CLAMP, HOSE                              | EA             | 1                        |
| 11                                | 33                | MDDZZ       |                             | 51190              | 2400-8009-000         | LABEL, CAUTION                           | EA             | 1                        |



SIDE VIEW

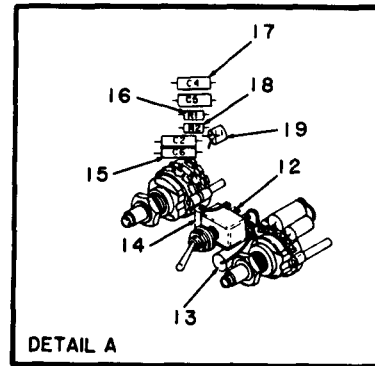
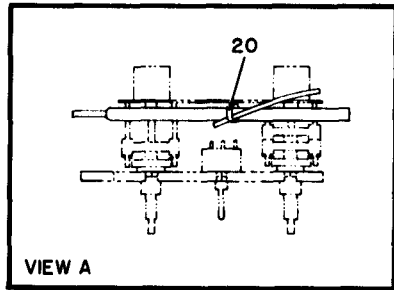
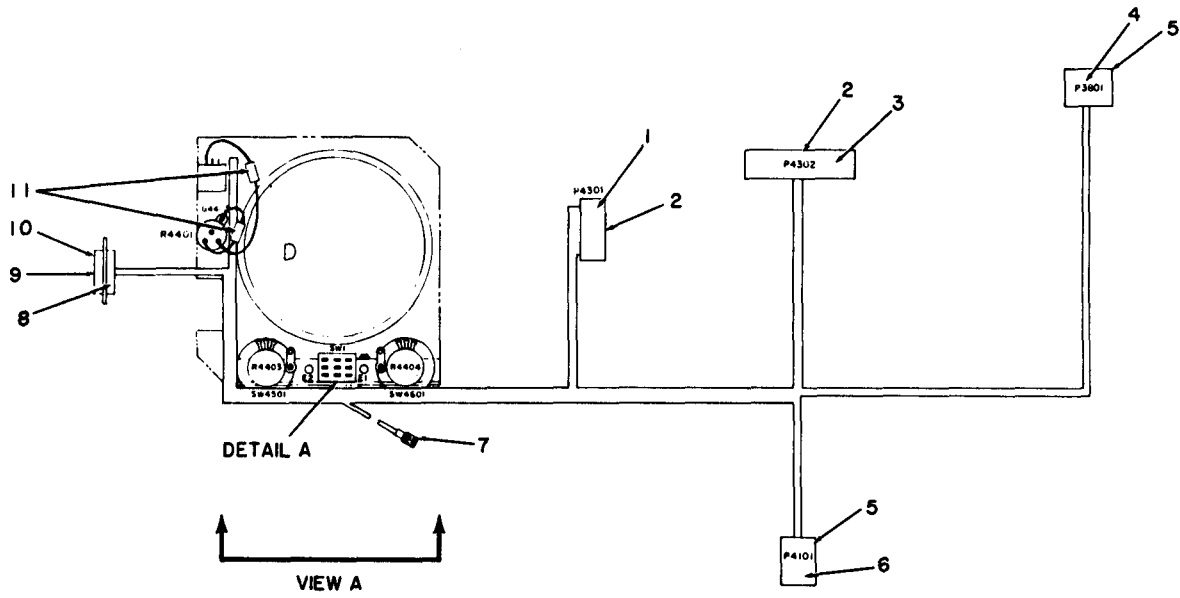


TOP VIEW

EL8ANOI2

Figure 12. Mechanical Assembly Horizontal Sweep Switch A1A18A5A1.

| SECTION II   |      | TM11-6625-3016-24P |                  |               |                                     |                       |      |   |
|--------------|------|--------------------|------------------|---------------|-------------------------------------|-----------------------|------|---|
| (1)          | (2)  | (3)                | (4)              | (5)           | (6)                                 | (7)                   | (8)  |   |
| ILLUSTRATION |      | NATIONAL           | DESCRIPTION      |               |                                     | QTY                   |      |   |
| (A)          | (B)  | STOCK              |                  |               |                                     | INC                   |      |   |
| FIG          | ITEM | NUMBER             | PART             |               |                                     | IN                    |      |   |
| NO           | NO   |                    | NUMBER           |               | USABLE ON CODE                      | U/M                   | UNIT |   |
|              |      |                    |                  |               | GROUP 01170501 MECHANICAL ASSEMBLY, |                       |      |   |
|              |      |                    |                  |               | HORIZONTAL SWEEP SWITCH             |                       |      |   |
|              |      |                    |                  |               | A1A18A5A1                           |                       |      |   |
| 12           | 1    | PADZZ              | 11237            | 5P6043A       | SWITCH, ROTARY                      | EA                    | 1    |   |
| 12           | 2    | PADZZ              | 27735            | PC12-.01-50-5 | CAPACITOR, FIXED, PLA               | EA                    | 1    |   |
| 12           | 3    | PADZZ              | 27735            | PC12-.1-50-5  | CAPACITOR, FIXED, PLA               | EA                    | 1    |   |
| 12           | 4    | PADZZ              | 5910-01-123-0747 | 31433         | T322B105K035AS                      | CAPACITOR, FIXED, ELE | EA   | 1 |
| 12           | 5    | PADZZ              | 5910-00-248-9346 | 05397         | T322C106K020AS                      | CAPACITOR, FIXED, ELE | EA   | 1 |

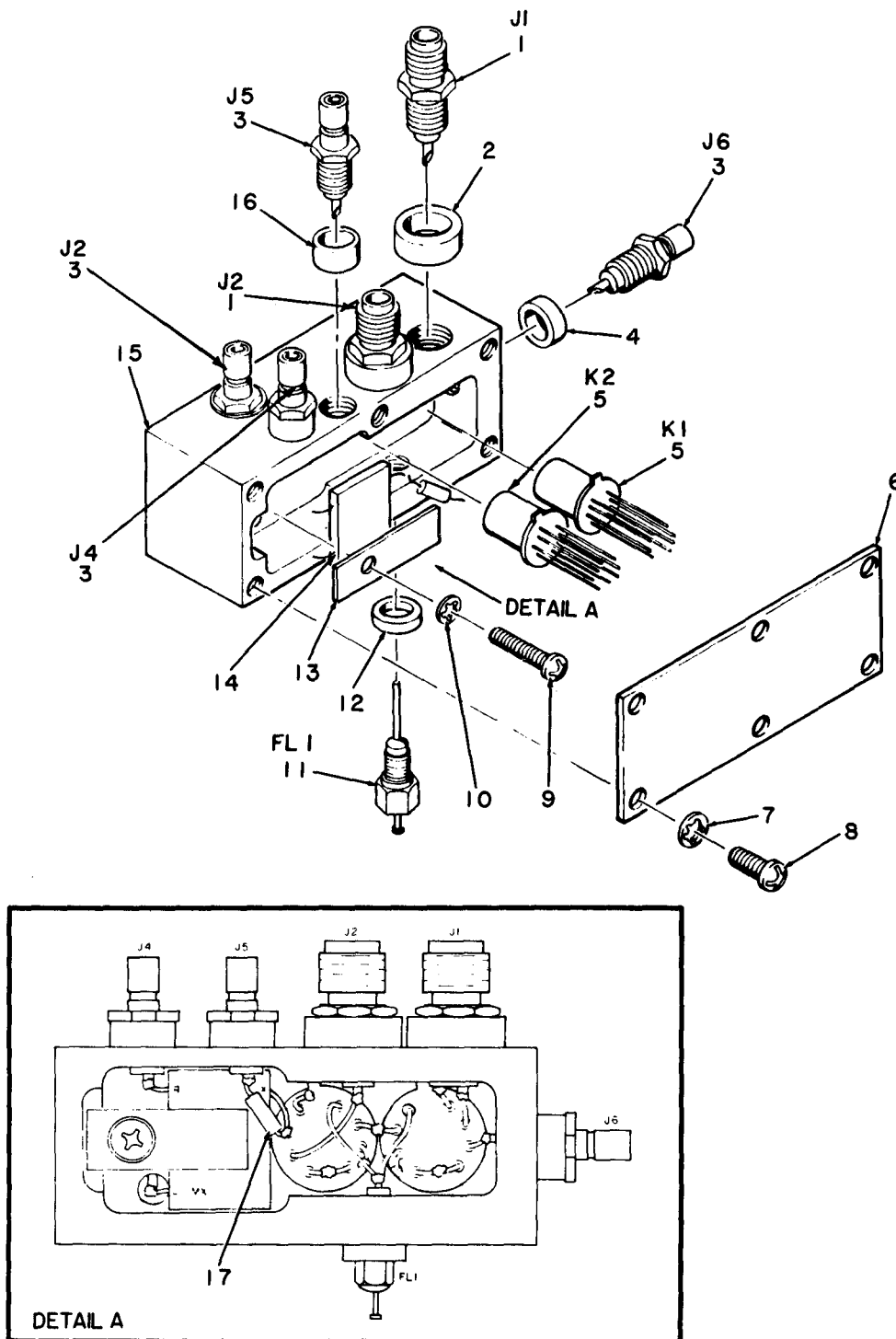


ELBAND13

Figure 13. Wire Harness Assembly Spectrum Analyzer A1A18A5A3.



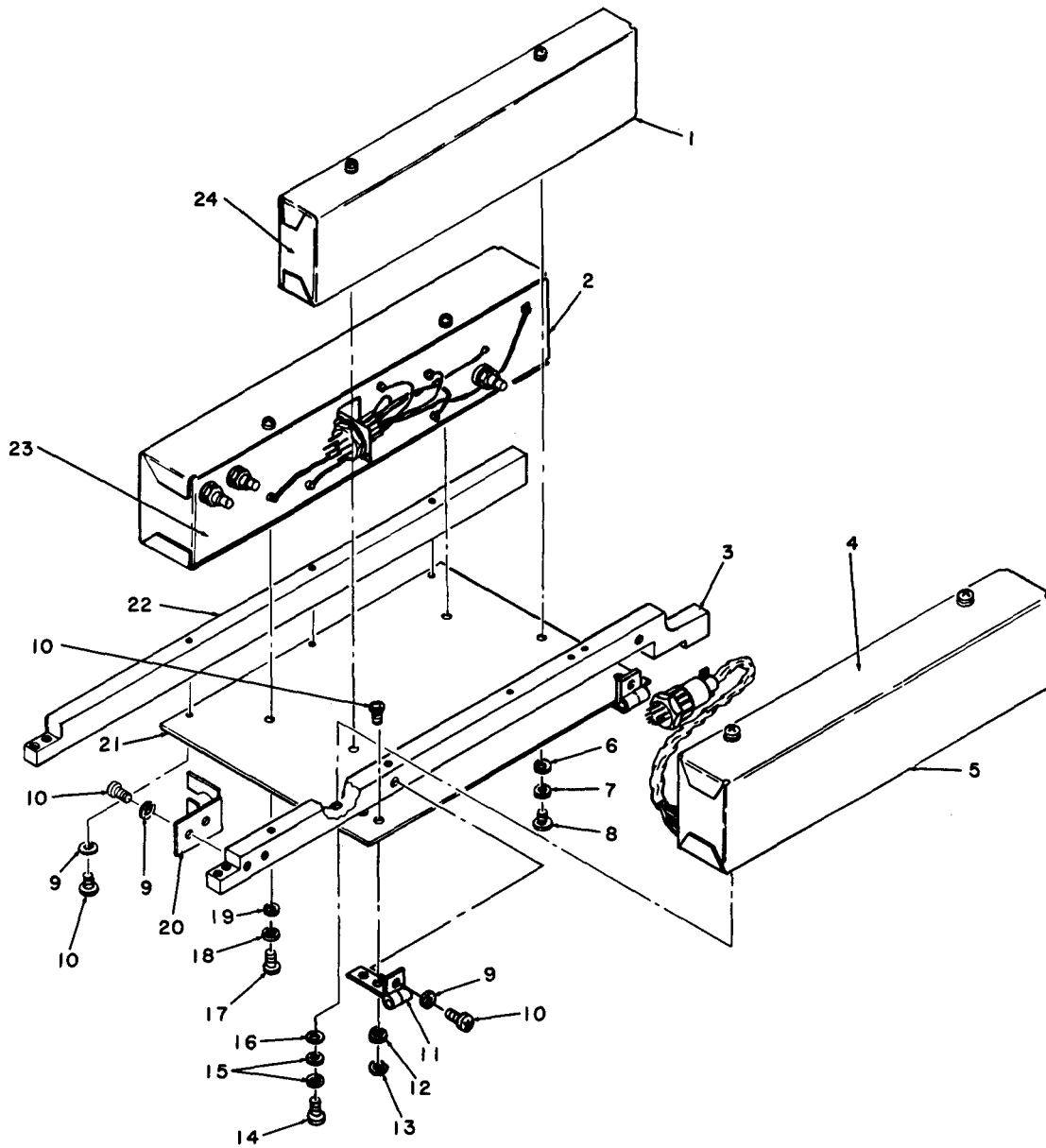
| SECTION II<br>(1)<br>ILLUSTRATION<br>(A) (B)<br>FIG ITEM<br>NO NO |    | (2)<br>SMR<br>CODE | (3)<br>NATIONAL<br>STOCK<br>NUMBER | TM11-6625-3016-24P<br>(4) (5)<br>FSCM PART<br>NUMBER |                 | (6)<br>DESCRIPTION    | (7)<br>USABLE ON CODE U/M | (8)<br>QTY<br>INC<br>IN<br>UNIT |
|---|----|--------------------|------------------------------------|--|-----------------|-----------------------|---------------------------|---------------------------------|
| GROUP 01170503 WIRE HARNESS ASSEMBLY,                             |    |                    |                                    |  |                 |                       |                           |                                 |
| SPECTRUM ANALYZER   |    |                    |                                    |  |                 |                       |                           |                                 |
| A1A18A5A3   |    |                    |                                    |  |                 |                       |                           |                                 |
| 13  | 1  | PADZZ              | 5935-01-082-5293                   | 27264  | 22-01-2101      | CONNECTOR BODY, RECE  | EA                        | 1                               |
| 13  | 2  | PADZZ              |                                    | 27264  | 08-56-0110      | CONTACT, ELECTRICAL   | EA                        | 23                              |
| 13  | 3  | PADZZ              | 5935-01-036-3441                   | 27264  | 22-01-2181      | CONNECTOR, PLUG, ELEC | EA                        | 1                               |
| 13  | 4  | PADZZ              | 5935-00-032-9553                   | 27264  | 03-06-2055      | CONNECTOR BODY, RECE  | EA                        | 1                               |
| 13  | 5  | PADZZ              | 5999-00-540-9143                   | 27264  | 02-06-2132      | CONTACT, ELECTRICAL   | EA                        | 11                              |
| 13  | 6  | PADZZ              | 5935-00-309-8502                   | 27264  | 1625-6P1        | CONNECTOR BODY, PLUG  | EA                        | 1                               |
| 13  | 7  | PADZZ              |                                    | 51190  | 6050-0070-890   | CABLE, RADIO FREQUEN  | EA                        | 1                               |
| 13  | 8  | PADZZ              | 5935-00-032-9564                   | 96214  | 539409-3        | CONNECTOR BODY, RECE  | EA                        | 1                               |
| 13  | 9  | PADZZ              |                                    | 18342  | 66506-3         | CONTACT, ELECTRICAL   | EA                        | 3                               |
| 13  | 10 | PADZZ              |                                    | 18342  | 66507-3         | CONTACT, ELECTRICAL   | EA                        | 5                               |
| 13  | 11 | PADZZ              | 5905-00-135-6046                   | 81349  | RCR07G681JS     | RESISTOR, FIXED, COMP | EA                        | 2                               |
| 13  | 12 | PADZZ              | 5930-00-162-1858                   | 09353  | 7303SYZQ        | SWITCH, TOGGLE        | EA                        | 1                               |
| 13  | 13 | PADZZ              |                                    | 27735  | PE11-.1-200-5   | CAPACITOR, FIXED, PLA | EA                        | 1                               |
| 13  | 14 | PADZZ              |                                    | 31433  | T322D685M035AS  | CAPACITOR, FIXED      | EA                        | 1                               |
| 13  | 15 | PADZZ              |                                    | 27735  | PC12-.01-50-5   | CAPACITOR, FIXED, PLA | EA                        | 2                               |
| 13  | 16 | PADZZ              |                                    | 28363  | C41001F         | RESISTOR, FIXED, FILM | EA                        | 1                               |
| 13  | 17 | PADZZ              |                                    | 27735  | PE13-.0015-80-5 | CAPACITOR, FIXED, PLA | EA                        | 2                               |
| 13  | 18 | PADZZ              |                                    | 28363  | C41000F         | RESISTOR, FIXED, FILM | EA                        | 1                               |
| 13  | 19 | PADZZ              |                                    | 99800  | 2534-36         | COIL, RADIO FREQUENC  | EA                        | 1                               |
| 13  | 20 | PADZZ              | 5975-00-111-3208                   | 96906  | MS3367-5-9      | STRAP, TIEDOWN, ELECT | EA                        | 20                              |



EL8ANO14

Figure 14. Mechanical Assembly First Mixer A1A19.

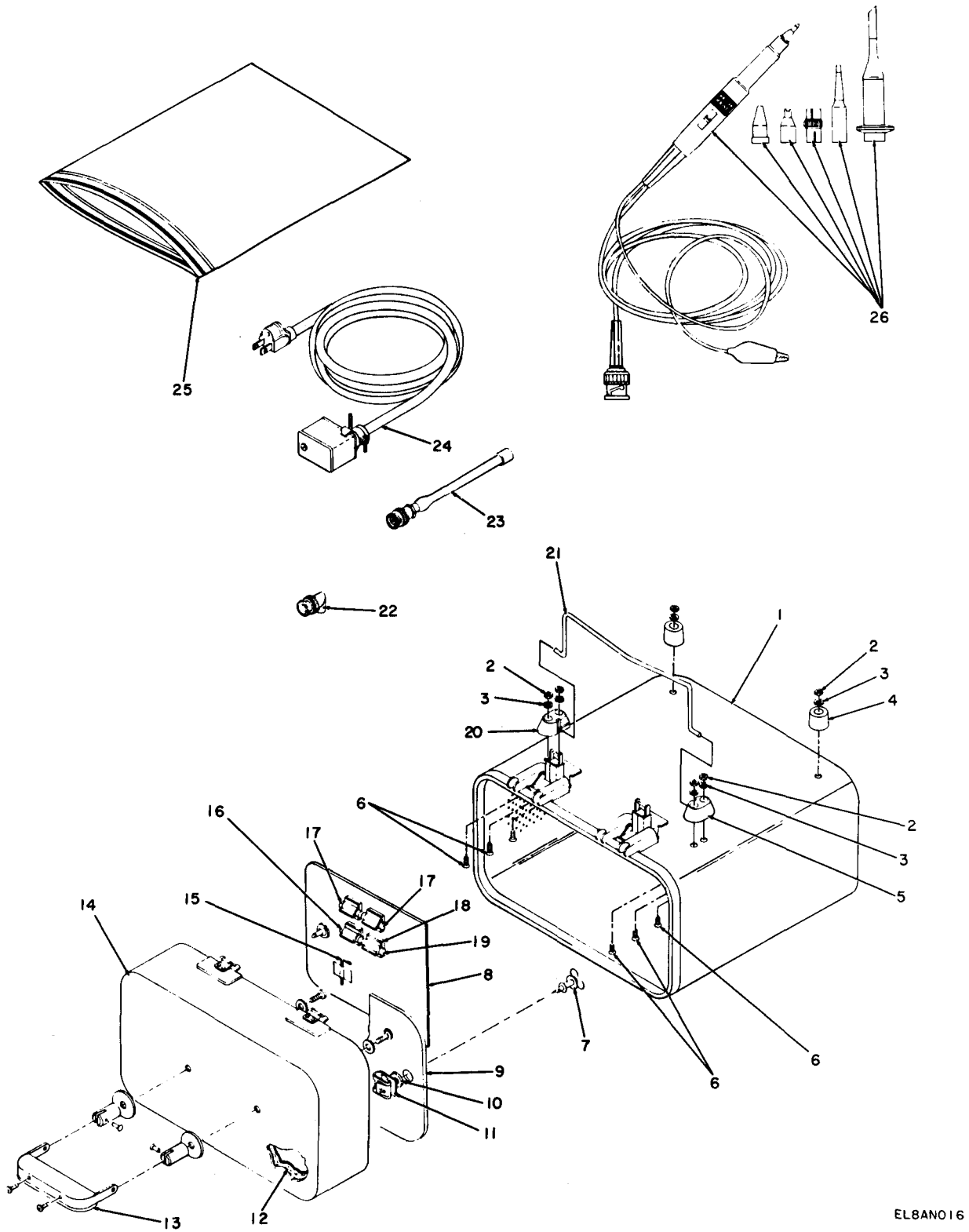
| SECTION II<br>(1)<br>ILLUSTRATION |                   | (2)         | (3)                         | TM11-6625-3016-24P |                | (6)   | (7)            | (8)                      |
|-----------------------------------|-------------------|-------------|-----------------------------|--------------------|----------------|---|----------------|--------------------------|
| (A)<br>FIG<br>NO                  | (B)<br>ITEM<br>NO | SMR<br>CODE | NATIONAL<br>STOCK<br>NUMBER | FSCM               | PART<br>NUMBER | DESCRIPTION   | USABLE ON CODE | QTY<br>INC<br>IN<br>UNIT |
|                                   |                   |             |                             |                    |                | GROUP 0118 MECHANICAL ASSEMBLY, FIRST<br>MIXER, ALA19 |                |                          |
| 14                                | 1                 | PAHZZ       |                             | 19505              | 60-9939-090    | CONNECTOR, RECEPTACL                                  | EA             | 2                        |
| 14                                | 2                 | PAHZZ       |                             | 51190              | 2800-7600-111  | SPACER  | EA             | 2                        |
| 14                                | 3                 | PAHZZ       |                             | 19505              | 17-0219-000    | CONNECTOR   | EA             | 4                        |
| 14                                | 4                 | PAHZZ       |                             | 51190              | 2800-7600-154  | SPACER  | EA             | 1                        |
| 14                                | 5                 | PAHZZ       |                             | 11532              | 732-12         | RELAY   | EA             | 2                        |
| 14                                | 6                 | MHHZZ       |                             | 51190              | 1414-2373-500  | COVER, MIXER  | EA             | 1                        |
| 14                                | 7                 | PAHZZ       | 5310-00-193-7577            | 96906              | MS35333-36     | WASHER, LOCK  | EA             | 3                        |
| 14                                | 8                 | PAHZZ       | 5305-00-764-2966            | 96906              | MS51959-2      | SCREW, MACHINE  | EA             | 3                        |
| 14                                | 9                 | PAHZZ       | 5305-00-054-6661            | 96906              | MS51957-37     | SCREW, MACHINE  | EA             | 1                        |
| 14                                | 10                | PAHZZ       |                             | 96906              | MS35233-131    | WASHER, LOCK  | EA             | 1                        |
| 14                                | 11                | PAHZZ       | 5915-01-084-6573            | 33095              | 51-712-001     | FILTER, RADIO FREQUE                                  | EA             | 1                        |
| 14                                | 12                | PAHZZ       |                             | 51190              | 2800-7600-179  | SPACER  | EA             | 1                        |
| 14                                | 13                | PAHZZ       |                             | 51190              | 4503-2373-600  | RETAINER  | EA             | 1                        |
| 14                                | 14                | PAHZZ       | 5895-01-128-3218            | 21912              | MD-614         | MIXER   | EA             | 1                        |
| 14                                | 15                | MHHZZ       |                             | 51190              | 2100-2373-400  | ENCLOSURE   | EA             | 1                        |
| 14                                | 16                | PAHZZ       |                             | 51190              | 2800-7600-180  | SPACER  | EA             | 2                        |
| 14                                | 17                | PAHZZ       |                             | 28363              | C42490F        | RESISTOR, FIXED, FILM                                 | EA             | 1                        |



EL8AN015

Figure 15. Mechanical Assembly Lower Floor A1A24.

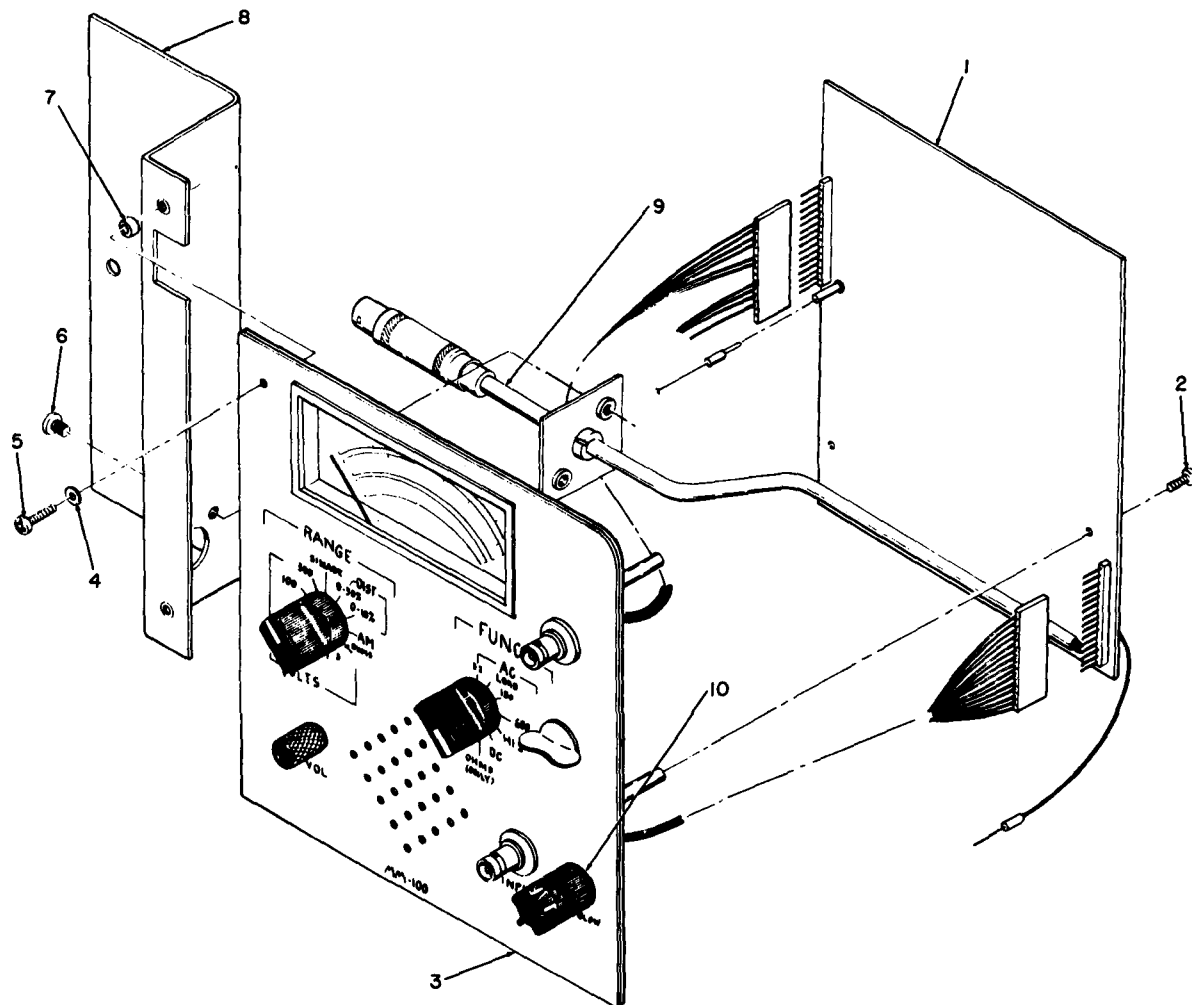
| SECTION II<br>(1)<br>ILLUSTRATION     |                   | (2)         | (3)                         | TM11-6625-3016-24P |                       | (6)                 | (7)            | (8)                      |
|---------------------------------------|-------------------|-------------|-----------------------------|--------------------|-----------------------|---------------------|----------------|--------------------------|
| (A)<br>FIG<br>NO                      | (B)<br>ITEM<br>NO | SMR<br>CODE | NATIONAL<br>STOCK<br>NUMBER | (4)<br>FSCM        | (5)<br>PART<br>NUMBER | DESCRIPTION         | USABLE ON CODE | QTY<br>INC<br>IN<br>UNIT |
| GROUP 0123 MECHANICAL ASSEMBLY, LOWER |                   |             |                             |                    |                       |                     |                |                          |
| FLOOR,ALA24                           |                   |             |                             |                    |                       |                     |                |                          |
| 15                                    | 1                 | PAHZZ       | 6625-01-109-1676            | 51190              | 7017-2321-900         | MIXER ASSEMBLY      | EA             | 1                        |
| 15                                    | 2                 | PAHZZ       | 6625-01-109-1674            | 51190              | 7005-2376-200         | FM AM GENERATOR     | EA             | 1                        |
| 15                                    | 3                 | XAHZZ       |                             | 51190              | 1404-2316-300         | RAIL, SPRT          | EA             | 1                        |
| 15                                    | 4                 | PAHZZ       | 6625-01-109-1675            | 51190              | 7027-2348-300         | RECEIVER ASSEMBLY   | EA             | 1                        |
| 15                                    | 5                 | XADZZ       |                             | 51190              | 7010-2348-200         | PRINTED CKT BD ASSY | EA             | 1                        |
| 15                                    | 6                 | XAHZZ       |                             | 96906              | MS27183-4             | WASHER, FLAT        | EA             | 2                        |
| 15                                    | 7                 | XAHZZ       |                             | 96906              | MS35333-36            | WASHER, LOCK        | EA             | 2                        |
| 15                                    | 8                 | XAHZZ       |                             | 96906              | MS51957-19            | SCREW, MACHINE      | EA             | 2                        |
| 15                                    | 9                 | PAHZZ       | 5310-00-193-7577            | 96906              | MS35333-36            | WASHER, LOCK        | EA             | 2                        |
| 15                                    | 10                | PAHZZ       | 5305-00-054-5653            | 96906              | MS51957-19            | SCREW, MACHINE      | EA             | 2                        |
| 15                                    | 11                | XDHZZ       |                             | 51190              | 2832-0016-901         | HINGE               | EA             | 2                        |
| 15                                    | 12                | PAHZZ       |                             | 96906              | MS35233-131           | WASHER, LOCK        | EA             | 4                        |
| 15                                    | 13                | PAHZZ       | 5310-00-938-2013            | 96906              | MS35649-224           | NUT, PLAIN, HEXAGON | EA             | 4                        |
| 15                                    | 14                | XAHZZ       |                             | 96906              | MS51957-19            | SCREW, MACHINE      | EA             | 2                        |
| 15                                    | 15                | XAHZZ       |                             | 96906              | MS35333-36            | WASHER, LOCK        | EA             | 4                        |
| 15                                    | 16                | XAHZZ       |                             | 96906              | MS27183-4             | WASHER, FLAT        | EA             | 2                        |
| 15                                    | 17                | XAHZZ       |                             | 96906              | MS51957-19            | SCREW, MACHINE      | EA             | 2                        |
| 15                                    | 18                | XAHZZ       |                             | 96906              | MS35333-36            | WASHER, LOCK        | EA             | 2                        |
| 15                                    | 19                | XAHZZ       |                             | 96906              | MS27183-4             | WASHER, FLAT        | EA             | 2                        |
| 15                                    | 20                | XDHZZ       |                             | 51190              | 1400-2340-900         | BRACKET, MTG        | EA             | 1                        |
| 15                                    | 21                | XAHZZ       |                             | 51190              | 2506-2310-200         | FLOOR               | EA             | 1                        |
| 15                                    | 22                | XDHZZ       |                             | 51190              | 1404-2325-700         | RAIL, SPRT          | EA             | 1                        |
| 15                                    | 23                | XADZZ       |                             | 51190              | 7010-2376-100         | PRINTED CKT BD ASSY | EA             | 1                        |
| 15                                    | 24                | XADZZ       |                             | 51190              | 7010-2309-500         | PRINTED CKT BD ASSY | EA             | 1                        |



ELBAN016

Figure 16. Case Assembly A2.

| SECTION II<br>(1)<br>ILLUSTRATION |                   | (2)         | (3)                         | TM11-6625-3016-24P |                       | (6)                       | (7)            | (8) |
|-----------------------------------|-------------------|-------------|-----------------------------|--------------------|-----------------------|---------------------------|----------------|-----|
| (A)<br>FIG<br>NO                  | (B)<br>ITEM<br>NO | SMR<br>CODE | NATIONAL<br>STOCK<br>NUMBER | (4)<br>FSCM        | (5)<br>PART<br>NUMBER | DESCRIPTION               | USABLE ON CODE | U/M |
|                                   |                   |             |                             |                    |                       | GROUP 02 CASE ASSEMBLY A2 |                |     |
| 16                                | 1                 | PAHZZ       |                             | 51190              | 1412-7635-600         | CASE,MODIFIED             | EA             | 1   |
| 16                                | 2                 | PAHZZ       | 5310-00-934-9761            | 96906              | MS35649-264           | NUT,PLAIN,HEXAGON         | EA             | 2   |
| 16                                | 3                 | PAHZZ       |                             | 96906              | MS35333-131           | WASHER,LOCK               | EA             | 2   |
| 16                                | 4                 | PAHZZ       |                             | 51190              | 1421-0000-500         | FOOT,CONICAL              | EA             | 2   |
| 16                                | 5                 | PAHZZ       |                             | 51190              | 1421-0000-201         | FOOT,MTG                  | EA             | 1   |
| 16                                | 6                 | PAHZZ       | 5305-00-764-2964            | 96906              | MS51959-4             | SCREW,MACHINE             | EA             | 2   |
| 16                                | 7                 | PAHZZ       |                             | 94222              | 85-12-160-16          | FASTENER,RECEPTACLE       | EA             | 2   |
| 16                                | 8                 | PADZZ       |                             | 51190              | 1414-2379-100         | COVER,ACCESSORY           | EA             | 1   |
| 16                                | 9                 | PAHDD       |                             | 51190              | 7003-2380-000         | COMPOSITE ASSEMBLY        | EA             | 1   |
| 16                                | 10                | PAHZZ       | 5310-00-822-8525            | 94222              | 85-34-101-20          | WASHER,SPLIT              | EA             | 2   |
| 16                                | 11                | PAHZZ       |                             | 94222              | 85-47-101-15          | RECEPTACLE,TURNLOCK       | EA             | 2   |
| 16                                | 12                | XAHZZ       |                             | 51190              | 3107-2380-600         | INSULATOR                 | EA             | 1   |
| 16                                | 13                | PAHZZ       |                             | 51190              | 1407-0000-002         | HANDLE                    | EA             | 1   |
| 16                                | 14                | PAHZZ       |                             | 51190              | 1412-7635-700         | CASE COVER                | EA             | 1   |
| 16                                | 15                | PAHZZ       |                             | 39428              | 7122H13               | KEY,HEX                   | EA             | 1   |
| 16                                | 16                | PAHZZ       | 5920-00-156-7375            | 81349              | F02B250V1-1/4A        | FUSE,CARTRIDGE            | EA             | 1   |
| 16                                | 17                | PAHZZ       | 5920-00-056-6620            | 71400              | AGC-7-1/2             | FUSE,CARTRIDGE            | EA             | 2   |
| 16                                | 18                | PAHZZ       |                             | 25706              | 670-1/4               | CLIP,SPRING TENSION       | EA             | 4   |
| 16                                | 19                | PAHZZ       | 5920-00-518-1790            | 81349              | F02A250V3/8A          | FUSE,CARTRIDGE            | EA             | 1   |
| 16                                | 20                | PAHZZ       |                             | 51190              | 1421-0000-200         | FOOT,MTG                  | EA             | 1   |
| 16                                | 21                | XAHZZ       |                             | 51109              | 1422-0001-000         | BAIL,STAND                | EA             | 1   |
| 16                                | 22                | PAHZZ       | 5935-01-032-5404            | 81349              | M55339/14-00306       | ADAPTER,CONNECTOR         | EA             | 1   |
| 16                                | 23                | PAHZZ       |                             | 51190              | 1201-7616-500         | ANTENNA ASSEMBLY          | EA             | 1   |
| 16                                | 24                | PAHZZ       |                             | 51190              | 6041-2326-602         | CABLE ASSEMBLY,POWE       | EA             | 1   |
| 16                                | 25                | PAHZZ       |                             | 20208              | 9380                  | BAG,PLASTIC               | EA             | 1   |
| 16                                | 26                | XAHZZ       |                             | 51190              | 6500-2380-800         | MINOR ASSY                | EA             | 1   |



EL8AN017

Figure 17. Composite Assembly A2A1.



| SECTION II<br>(1)<br>ILLUSTRATION  |                   | (2)         | (3)                         | TM11-6625-3016-24P |                       | (6)                 | (7)            | (8)                      |
|------------------------------------|-------------------|-------------|-----------------------------|--------------------|-----------------------|---------------------|----------------|--------------------------|
| (A)<br>FIG<br>NO                   | (B)<br>ITEM<br>NO | SMR<br>CODE | NATIONAL<br>STOCK<br>NUMBER | (4)<br>FSCM        | (5)<br>PART<br>NUMBER | DESCRIPTION         | USABLE ON CODE | QTY<br>INC<br>IN<br>UNIT |
| GROUP 0201 COMPOSITE ASSEMBLY A2A1 |                   |             |                             |                    |                       |                     |                |                          |
| 17                                 | 1                 | PADZZ       |                             | 51190              | 7010-2380-300         | PRINTED CKT BD ASSY | EA             | 1                        |
| 17                                 | 2                 | XAHZZ       |                             | 96906              | MS51957-37            | SCREW,MACHINE       | EA             | 3                        |
| 17                                 | 3                 | PADZZ       |                             | 51190              | 7005-2380-400         | PANEL,FR            | EA             | 1                        |
| 17                                 | 4                 | PADZZ       | 5310-00-582-5965            | 96906              | MS35338-44            | WASHER,LOCK         | EA             | 2                        |
| 17                                 | 5                 | PADZZ       | 5305-00-054-6653            | 96906              | MS51957-29            | SCREW,MACHINE       | EA             | 2                        |
| 17                                 | 6                 | XAHZZ       |                             | 96906              | MS51957-37            | SCREW,MACHINE       | EA             | 2                        |
| 17                                 | 7                 | XAHZZ       |                             | 51190              | 2800-7600-150         | SPACER              | EA             | 2                        |
| 17                                 | 8                 | XAHZZ       |                             | 51190              | 6500-2379-400         | BRACKET,FR PANEL    | EA             | 1                        |
| 17                                 | 9                 | XADZZ       |                             | 51190              | 6046-2379-900         | CABLE ASSY          | EA             | 1                        |
| 17                                 | 10                | PAOZZ       | 5920-00-280-5029            | 81349              | F02A250V1/32A         | FUSE,CARTRIDGE      | EA             | 1                        |

## NATIONAL STOCK NUMBER AND PART NUMBER INDEX

| STOCK NUMBER     | FIGURE NO | ITEM NO | STOCK NUMBER     | FIGURE NO | ITEM NO |
|------------------|-----------|---------|------------------|-----------|---------|
| 5310-00-019-0676 | 8         | 42      | 5305-00-763-6958 | 8         | 10      |
| 5935-00-032-9553 | 13        | 4       | 5305-00-763-6963 | 2         | 4       |
| 5935-00-032-9560 | 5         | 7       | 5305-00-763-6963 | 8         | 7       |
| 5935-00-032-9560 | 8         | 38      | 5305-00-763-6963 | 8         | 14      |
| 5935-00-032-9564 | 5         | 11      | 5305-00-764-2964 | 11        | 19      |
| 5935-00-032-9564 | 10        | 29      | 5305-00-764-2964 | 16        | 6       |
| 5935-00-032-9564 | 13        | 8       | 5305-00-764-2966 | 2         | 32      |
| 5305-00-054-5636 | 2         | 40      | 5305-00-764-2966 | 10        | 24      |
| 5305-00-054-5638 | 2         | 43      | 5305-00-764-2966 | 11        | 7       |
| 5305-00-054-5644 | 2         | 10      | 5305-00-764-2966 | 14        | 8       |
| 5305-00-054-5644 | 7         | 1       | 5305-00-768-0336 | 2         | 26      |
| 5305-00-054-5644 | 10        | 2       | 5305-00-768-0336 | 8         | 19      |
| 5305-00-054-5649 | 8         | 44      | 5305-00-770-2533 | 3         | 15      |
| 5305-00-054-5650 | 2         | 18      | 5305-00-770-2533 | 8         | 23      |
| 5305-00-054-5651 | 2         | 27      | 5305-00-770-2533 | 11        | 17      |
| 5305-00-054-5651 | 2         | 61      | 5305-00-770-2579 | 8         | 41      |
| 5305-00-054-5653 | 2         | 16      | 5305-00-777-6039 | 2         | 33      |
| 5305-00-054-5653 | 6         | 15      | 5310-00-782-1349 | 2         | 87A     |
| 5305-00-054-5653 | 11        | 2       | 5310-00-782-1349 | 10        | 20      |
| 5305-00-054-5653 | 15        | 10      | 5310-00-782-1349 | 10        | 27      |
| 5305-00-054-6649 | 8         | 12      | 5310-00-822-8525 | 16        | 10      |
| 5305-00-054-6653 | 10        | 3       | 5935-00-853-7596 | 3         | 12      |
| 5305-00-054-6653 | 17        | 5       | 6240-00-878-1965 | 3         | 7       |
| 5305-00-054-6661 | 2         | 1A      | 5920-00-892-9311 | 8         | 3       |
| 5305-00-054-6661 | 3         | 13      | 5935-00-903-9778 | 6         | 3       |
| 5305-00-054-6661 | 6         | 14      | 5935-00-910-5086 | 5         | 8       |
| 5305-00-054-6661 | 14        | 9       | 5935-00-912-2331 | 5         | 9       |
| 5920-00-056-6620 | 8         | 4       | 5310-00-934-9739 | 8         | 28      |
| 5920-00-056-6620 | 16        | 17      | 5310-00-934-9739 | 10        | 39      |
| 5910-00-060-9391 | 10        | 23      | 5310-00-934-9739 | 11        | 15      |
| 5305-00-068-5276 | 10        | 9       | 5310-00-934-9748 | 2         | 92      |
| 5305-00-068-5412 | 8         | 17      | 5310-00-934-9748 | 6         | 1       |
| 5960-00-088-9897 | 11        | 31      | 5310-00-934-9748 | 8         | 31      |
| 5905-00-106-3666 | 5         | 17      | 5310-00-934-9761 | 6         | 28      |
| 5975-00-111-3208 | 13        | 20      | 5310-00-934-9761 | 8         | 21      |
| 5930-00-112-4266 | 4         | 12      | 5310-00-934-9761 | 10        | 35      |
| 5905-00-114-0710 | 5         | 18      | 5310-00-934-9761 | 16        | 2       |
| 5915-00-116-6571 | 10        | 26      | 5310-00-934-9765 | 2         | 76      |
| 5905-00-135-6046 | 13        | 11      | 5961-00-938-1135 | 5         | 15      |
| 5940-00-156-7196 | 6         | 25      | 5310-00-938-2013 | 2         | 63      |
| 5940-00-156-7196 | 8         | 22      | 5310-00-938-2013 | 4         | 13      |
| 5940-00-156-7345 | 8         | 29      | 5310-00-938-2013 | 15        | 13      |
| 5940-00-156-7373 | 8         | 32      | 5310-00-950-1310 | 8         | 25      |
| 5920-00-156-7375 | 8         | 5       | 5305-00-959-0379 | 2         | 23      |
| 5920-00-156-7375 | 16        | 16      | 5961-01-005-6607 | 10        | 41      |
| 5930-00-162-1858 | 13        | 12      | 5961-01-007-2231 | 10        | 1       |
| 5310-00-167-0657 | 2         | 64      | 5961-01-012-9316 | 10        | 36      |
| 5310-00-167-0752 | 2         | 2       | 5935-01-013-7223 | 5         | 10      |
| 5935-00-192-4789 | 4         | 8       | 5930-01-029-2802 | 4         | 9       |
| 5310-00-193-7577 | 2         | 11      | 5935-01-032-5404 | 16        | 22      |
| 5310-00-193-7577 | 2         | 60      | 5305-01-034-3993 | 5         | 6       |
| 5310-00-193-7577 | 6         | 2       | 5305-01-034-3993 | 9         | 1       |
| 5310-00-193-7577 | 8         | 30      | 5930-01-036-1112 | 4         | 1       |
| 5310-00-193-7577 | 11        | 3       | 5935-01-036-3441 | 13        | 3       |
| 5310-00-193-7577 | 11        | 6       | 5930-01-057-1686 | 4         | 4       |
| 5310-00-193-7577 | 14        | 7       | 5999-01-075-7360 | 5         | 5       |
| 5310-00-193-7577 | 15        | 9       | 5910-01-079-7273 | 8         | 33      |
| 5940-00-204-8225 | 8         | 26      | 5310-01-080-9226 | 10        | 40      |
| 5940-00-204-9158 | 10        | 14      | 5935-01-082-5293 | 13        | 1       |
| 5910-00-248-9346 | 12        | 5       | 5999-01-083-0891 | 5         | 2       |
| 5935-00-258-1924 | 5         | 12      | 5999-01-083-0891 | 10        | 28      |
| 5920-00-280-5029 | 17        | 10      | 5915-01-084-6573 | 14        | 11      |
| 5935-00-309-8502 | 13        | 6       | 5999-01-088-4121 | 5         | 4       |
| 6210-00-378-3695 | 3         | 9       | 5999-01-088-4121 | 8         | 37      |
| 6210-00-378-3727 | 3         | 8       | 5910-01-097-2748 | 10        | 32      |
| 5310-00-400-5503 | 2         | 79      | 5961-01-103-5607 | 8         | 39      |
| 5905-00-477-1419 | 10        | 8       | 5970-01-103-9859 | 10        | 42      |
| 5905-00-487-8874 | 5         | 20      | 6625-01-108-0951 | 6         | 5       |
| 5905-00-498-6053 | 5         | 19      | 6625-01-108-0952 | 2         | 37      |
| 5940-00-500-7227 | 3         | 11      | 6625-01-108-0953 | 2         | 19      |
| 5940-00-513-3264 | 10        | 43      | 6625-01-108-0954 | 11        | 4       |
| 5920-00-518-1790 | 16        | 19      | 6625-01-108-0955 | 11        | 30      |
| 5935-00-539-1192 | 4         | 3       | 6625-01-108-0956 | 2         | 7       |
| 5905-00-539-2994 | 4         | 20      | 6625-01-108-0957 | 6         | 23      |
| 5999-00-540-9143 | 13        | 5       | 6625-01-108-0958 | 2         | 53      |
| 5910-00-577-1138 | 8         | 43      | 6625-01-108-0959 | 2         | 36      |
| 5910-00-577-1138 | 10        | 12      | 6625-01-108-0960 | 2         | 49      |
| 5310-00-582-5965 | 17        | 4       | 6625-01-108-0961 | 2         | 48      |
| 5999-00-624-9397 | 9         | 3       | 6625-01-108-0962 | 8         | 11      |
| 5305-00-727-8833 | 2         | 70      | 6625-01-108-0963 | 6         | 26      |

SECTION IV  
 NATIONAL STOCK NUMBER AND PART NUMBER INDEX

TM11-6625-3016-24P

| STOCK NUMBER     | FIGURE NO | ITEM NO |
|------------------|-----------|---------|
| 6625-01-108-0964 | 2         | 84      |
| 6625-01-108-0965 | 6         | 21      |
| 6625-01-108-0966 | 2         | 1       |
| 6625-01-108-0967 | 2         | 47      |
| 6625-01-108-0968 | 6         | 10      |
| 6625-01-109-0697 | 2         | 9       |
| 6625-01-109-1669 | 8         | 18      |
| 6625-01-109-1670 | 2         | 54      |
| 6625-01-109-1671 | 11        | 8       |
| 6625-01-109-1672 | 11        | 22      |
| 6625-01-109-1673 | 2         | 57      |

| STOCK NUMBER     | FIGURE NO | ITEM NO |
|------------------|-----------|---------|
| 6625-01-109-1674 | 15        | 2       |
| 6625-01-109-1675 | 15        | 4       |
| 6625-01-109-1676 | 15        | 1       |
| 6625-01-109-1677 | 2         | 8       |
| 5910-01-112-0835 | 10        | 25      |
| 5910-01-123-0747 | 12        | 4       |
| 5935-01-123-9863 | 10        | 38      |
| 5895-01-128-3218 | 14        | 14      |
| 6625-01-131-2623 | 2         | 59      |
| 6625-01-131-3439 | 1         | 1       |

| FSCM  | PART NUMBER       | FIGURE NO | ITEM NO | FSCM  | PART NUMBER  | FIGURE NO | ITEM NO |
|-------|-------------------|-----------|---------|-------|--------------|-----------|---------|
| 00303 | ABP               | 3         | 8       | 96906 | MS35333-36   | 15        | 18      |
| 71400 | AGC-7-1/2         | 8         | 4       | 96906 | MS35333-36   | 15        | 7       |
| 71400 | AGC-7-1/2         | 16        | 17      | 96906 | MS35338-44   | 17        | 4       |
| 88044 | AN960-3           | 2         | 64      | 96906 | MS35649-224  | 2         | 63      |
| 88044 | AN960D10L         | 2         | 2       | 96906 | MS35649-224  | 2         | 83      |
| 00303 | BEPB-BLACK        | 3         | 6       | 96906 | MS35649-224  | 4         | 13      |
| 04713 | B52200F006        | 10        | 40      | 96906 | MS35649-224  | 15        | 13      |
| 04713 | B52600F003        | 10        | 42      | 96906 | MS35649-242  | 8         | 28      |
| 01121 | CB1501            | 10        | 8       | 96906 | MS35649-242  | 10        | 39      |
| 90201 | CGS-133U025R4C3PH | 8         | 33      | 96906 | MS35649-242  | 11        | 15      |
| 28363 | C41000F           | 13        | 18      | 96906 | MS35649-244  | 2         | 92      |
| 28363 | C41001F           | 13        | 16      | 96906 | MS35649-244  | 6         | 1       |
| 28363 | C42490F           | 14        | 17      | 96906 | MS35649-244  | 8         | 31      |
| 95238 | C9-20PVRNGD       | 6         | 3       | 96906 | MS35649-264  | 6         | 28      |
| 95238 | C9-20SGDVS38C     | 5         | 8       | 96906 | MS35649-264  | 8         | 21      |
| 99942 | DD103             | 8         | 43      | 96906 | MS35649-264  | 10        | 35      |
| 99942 | DD103             | 10        | 12      | 96906 | MS35649-264  | 16        | 2       |
| 02735 | DF1038            | 10        | 37      | 96906 | MS35650-304  | 2         | 76      |
| 81349 | FHN26G1           | 8         | 3       | 96906 | MS35650-3254 | 2         | 79      |
| 81349 | F02A250V1/32A     | 17        | 10      | 96906 | MS51957-11   | 2         | 10      |
| 81349 | F02A250V3/8A      | 16        | 19      | 96906 | MS51957-11   | 7         | 1       |
| 81349 | F02B250V1-1/4A    | 8         | 5       | 96906 | MS51957-11   | 10        | 2       |
| 81349 | F02B250V1-1/4A    | 16        | 16      | 96906 | MS51957-11   | 11        | 23      |
| 00303 | GBP               | 3         | 9       | 96906 | MS51957-15   | 8         | 44      |
| 81349 | JAN1N4148         | 5         | 15      | 96906 | MS51957-16   | 2         | 18      |
| 21912 | MD-614            | 14        | 14      | 96906 | MS51957-17   | 2         | 27      |
| 27735 | MPC13-1-50-5      | 10        | 13      | 96906 | MS51957-17   | 2         | 61      |
| 96906 | MS15795-804       | 2         | 87A     | 96906 | MS51957-19   | 2         | 16      |
| 96906 | MS15795-804       | 10        | 20      | 96906 | MS51957-19   | 6         | 15      |
| 96906 | MS15795-804       | 10        | 27      | 96906 | MS51957-19   | 11        | 2       |
| 96906 | MS16995-10        | 2         | 23      | 96906 | MS51957-19   | 15        | 10      |
| 96906 | MS16995-12        | 2         | 17      | 96906 | MS51957-19   | 15        | 14      |
| 96906 | MS16995-4         | 8         | 17      | 96906 | MS51957-19   | 15        | 17      |
| 96906 | MS16995-9         | 10        | 9       | 96906 | MS51957-19   | 15        | 8       |
| 96906 | MS27183-4         | 6         | 22      | 96906 | MS51957-2    | 2         | 40      |
| 96906 | MS27183-4         | 8         | 25      | 96906 | MS51957-25   | 8         | 12      |
| 96906 | MS27183-4         | 15        | 16      | 96906 | MS51957-28   | 2         | 4       |
| 96906 | MS27183-4         | 15        | 19      | 96906 | MS51957-28   | 8         | 7       |
| 96906 | MS27183-4         | 15        | 6       | 96906 | MS51957-28   | 8         | 14      |
| 96906 | MS3367-5-9        | 13        | 20      | 96906 | MS51957-29   | 10        | 3       |
| 96906 | MS35233-131       | 2         | 44      | 96906 | MS51957-29   | 17        | 5       |
| 96906 | MS35233-131       | 2         | 82      | 96906 | MS51957-37   | 2         | 1A      |
| 96906 | MS35233-131       | 2         | 22      | 96906 | MS51957-37   | 3         | 13      |
| 96906 | MS35233-131       | 4         | 14      | 96906 | MS51957-37   | 6         | 14      |
| 96906 | MS35233-131       | 6         | 19      | 96906 | MS51957-37   | 6         | 17      |
| 96906 | MS35233-131       | 7         | 2       | 96906 | MS51957-37   | 6         | 18      |
| 96906 | MS35233-131       | 14        | 10      | 96906 | MS51957-37   | 14        | 9       |
| 96906 | MS35233-131       | 15        | 12      | 96906 | MS51957-37   | 17        | 6       |
| 96906 | MS35333-109       | 8         | 42      | 96906 | MS51957-37   | 17        | 2       |
| 96906 | MS35333-131       | 6         | 29      | 96906 | MS51957-4    | 2         | 43      |
| 96906 | MS35333-131       | 8         | 16      | 96906 | MS51959-12   | 2         | 33      |
| 96906 | MS35333-131       | 8         | 20      | 96906 | MS51959-13   | 3         | 15      |
| 96906 | MS35333-131       | 10        | 17      | 96906 | MS51959-13   | 8         | 23      |
| 96906 | MS35333-131       | 16        | 3       | 96906 | MS51959-13   | 11        | 17      |
| 96906 | MS35333-36        | 2         | 11      | 96906 | MS51959-15   | 8         | 41      |
| 96906 | MS35333-36        | 2         | 60      | 96906 | MS51959-17   | 2         | 26      |
| 96906 | MS35333-36        | 6         | 2       | 96906 | MS51959-17   | 8         | 19      |
| 96906 | MS35333-36        | 6         | 16      | 96906 | MS51959-2    | 2         | 32      |
| 96906 | MS35333-36        | 8         | 30      | 96906 | MS51959-2    | 10        | 24      |
| 96906 | MS35333-36        | 11        | 3       | 96906 | MS51959-2    | 11        | 7       |
| 96906 | MS35333-36        | 11        | 6       | 96906 | MS51959-2    | 14        | 8       |
| 96906 | MS35333-36        | 14        | 7       | 96906 | MS51959-24   | 8         | 10      |
| 96906 | MS35333-36        | 15        | 9       | 96906 | MS51959-3    | 2         | 70      |
| 96906 | MS35333-36        | 15        | 15      | 96906 | MS51959-4    | 11        | 19      |

SECTION IV  
 NATIONAL STOCK NUMBER AND PART NUMBER INDEX

TM11-6625-3016-24P

| FSCM  | PART NUMBER     | FIGURE NO | ITEM NO | FSCM  | PART NUMBER   | FIGURE NO | ITEM NO |
|-------|-----------------|-----------|---------|-------|---------------|-----------|---------|
| 96906 | MS51959-4       | 16        | 6       | 51190 | 1415-2348-500 | 2         | 50      |
| 96906 | MS77067-2       | 8         | 29      | 51190 | 1415-2362-200 | 11        | 5       |
| 96906 | MS77072-1       | 10        | 14      | 51190 | 1415-2363-100 | 11        | 28      |
| 96906 | MS77072-2       | 6         | 25      | 51190 | 1416-2313-600 | 8         | 6       |
| 96906 | MS77072-2       | 8         | 22      | 51190 | 1421-0000-200 | 16        | 20      |
| 96906 | MS77074-6       | 8         | 32      | 51190 | 1421-0000-201 | 16        | 5       |
| 81349 | M39012/21-0002  | 3         | 12      | 51190 | 1421-0000-500 | 16        | 4       |
| 81312 | M5SLSH19C       | 5         | 12      | 51190 | 1421-2338-100 | 8         | 1       |
| 81349 | M55339/14-00306 | 16        | 22      | 51190 | 1421-2338-200 | 8         | 13      |
| 81349 | M641/12-1       | 4         | 8       | 51190 | 1422-0001-000 | 16        | 21      |
| 18324 | NE5532N         | 2         | 67      | 83330 | 1468-1/4      | 4         | 5       |
| 14655 | NLW50-50        | 10        | 23      | 27264 | 1625-6P1      | 13        | 6       |
| 88124 | NLW500-6        | 5         | 16      | 19505 | 17-0219-000   | 14        | 3       |
| 88124 | NLW500-6        | 10        | 31      | 80131 | 2N5195        | 10        | 41      |
| 02735 | NR231A          | 10        | 34      | 80131 | 2N5879        | 10        | 1       |
| 22229 | NS2001          | 8         | 27      | 80131 | 2N6109        | 10        | 36      |
| 54068 | NT-2310         | 8         | 9       | 73906 | 20044005-004  | 3         | 18      |
| 54492 | P-2406-AB       | 8         | 8       | 65092 | 20044005-005  | 3         | 4       |
| 27735 | PC12-.01-50-5   | 12        | 2       | 00779 | 205210-1      | 5         | 10      |
| 27735 | PC12-.01-50-5   | 13        | 15      | 18342 | 205980-1      | 5         | 6       |
| 27735 | PC12-.1-50-5    | 12        | 3       | 18342 | 205980-1      | 9         | 1       |
| 27735 | PE11-.1-200-5   | 13        | 13      | 65092 | 20871172-001  | 3         | 5       |
| 27735 | PE13-.0015-80-5 | 13        | 17      | 51190 | 2100-2325-800 | 3         | 1       |
| 27735 | PE13-.047-80-20 | 5         | 21      | 51190 | 2100-2334-400 | 3         | 16      |
| 83701 | PK-10           | 8         | 39      | 51190 | 2100-2335-900 | 8         | 35      |
| 31223 | PT1-1           | 10        | 44      | 51190 | 2100-2373-400 | 14        | 15      |
| 97137 | PW-5-.1-10      | 8         | 45      | 51190 | 2109-7616-700 | 8         | 34      |
| 70903 | RA2.310NYL      | 3         | 10      | 27264 | 22-01-2101    | 13        | 1       |
| 81349 | RCR07G103JS     | 5         | 17      | 31157 | 22-01-2151    | 5         | 3       |
| 81349 | RCR07G331JS     | 5         | 18      | 27264 | 22-01-2181    | 13        | 3       |
| 81349 | RCR07G681JS     | 13        | 11      | 51190 | 2400-8002-000 | 9         | 4       |
| 81349 | RV6NAYS254A     | 4         | 20      | 51190 | 2400-8009-000 | 11        | 33      |
| 83701 | RWB020A         | 10        | 10      | 51190 | 2401-2347-600 | 2         | 71      |
| 90201 | TC1520C         | 10        | 32      | 51190 | 2402-0018-300 | 2         | 75      |
| 90201 | TT25X300A       | 10        | 25      | 51190 | 2402-0921-900 | 2         | 73      |
| 31433 | T322B105K035AS  | 12        | 4       | 51190 | 2402-0922-000 | 2         | 77      |
| 05397 | T322C106K020AS  | 12        | 5       | 51190 | 2402-0940-000 | 2         | 74      |
| 31433 | T322D685M035AS  | 13        | 14      | 51190 | 2402-2347-700 | 2         | 72      |
| 27264 | 02-06-2132      | 13        | 5       | 51190 | 2403-2377-901 | 3         | 3       |
| 27264 | 02-09-1103      | 9         | 3       | 51190 | 2405-2302-700 | 2         | 69      |
| 27264 | 03-06-2055      | 13        | 4       | 51190 | 2405-2369-900 | 11        | 24      |
| 31157 | 03-09-1022      | 9         | 2       | 51190 | 2406-2301-500 | 3         | 14      |
| 28480 | 0684-1211       | 5         | 20      | 51190 | 2506-2310-200 | 15        | 21      |
| 28480 | 0684-2231       | 5         | 19      | 51190 | 2506-2333-900 | 2         | 12      |
| 27264 | 08-50-0114      | 5         | 1       | 51190 | 2506-2337-500 | 10        | 5       |
| 27264 | 08-56-0110      | 13        | 2       | 51190 | 2506-2337-800 | 10        | 22      |
| 27264 | 10-17-2032      | 10        | 38      | 51190 | 2506-2360-800 | 6         | 13      |
| 82389 | 12B             | 4         | 3       | 51190 | 2509-2317-100 | 2         | 85      |
| 51190 | 1201-7616-500   | 16        | 23      | 51190 | 2513-2369-800 | 11        | 26      |
| 51190 | 1400-2303-200   | 4         | 10      | 51190 | 2517-2361-700 | 11        | 18      |
| 51190 | 1400-2327-400   | 2         | 52      | 51190 | 2518-7616-000 | 11        | 25      |
| 51190 | 1400-2329-000   | 2         | 13      | 99800 | 2534-36       | 13        | 19      |
| 51190 | 1400-2340-900   | 15        | 20      | 51190 | 2800-2600-161 | 2         | 20      |
| 51190 | 1400-2341-000   | 6         | 4       | 51190 | 2800-7600-111 | 14        | 2       |
| 51190 | 1400-2357-500   | 2         | 42      | 51190 | 2800-7600-116 | 2         | 15      |
| 51190 | 1400-2364-800   | 6         | 7       | 51190 | 2800-7600-138 | 8         | 36      |
| 51190 | 1400-2369-400   | 6         | 9       | 51190 | 2800-7600-139 | 4         | 17      |
| 51190 | 1400-2375-800   | 2         | 14      | 51190 | 2800-7600-150 | 17        | 7       |
| 51190 | 1404-2316-300   | 15        | 3       | 51190 | 2800-7600-154 | 7         | 6       |
| 51190 | 1404-2316-400   | 2         | 86      | 51190 | 2800-7600-154 | 14        | 4       |
| 51190 | 1404-2316-500   | 2         | 41      | 51190 | 2800-7600-161 | 6         | 20      |
| 51190 | 1404-2316-600   | 2         | 91      | 51190 | 2800-7600-162 | 8         | 2       |
| 51190 | 1404-2316-700   | 2         | 25      | 51190 | 2800-7600-179 | 14        | 12      |
| 51190 | 1404-2325-700   | 15        | 22      | 51190 | 2800-7600-180 | 14        | 16      |
| 51190 | 1405-2300-501   | 3         | 2       | 51190 | 2804-0375-051 | 10        | 4       |
| 51190 | 1405-2337-901   | 8         | 15      | 51190 | 2807-7632-600 | 2         | 88      |
| 51190 | 1407-0000-002   | 16        | 13      | 51190 | 2813-7600-163 | 2         | 55      |
| 83330 | 1410-6          | 10        | 43      | 51190 | 2813-7618-400 | 10        | 33      |
| 83330 | 1411-8          | 8         | 46      | 51190 | 2832-0016-901 | 15        | 11      |
| 51190 | 1412-7635-600   | 16        | 1       | 51190 | 2832-2317-000 | 6         | 12      |
| 51190 | 1412-7635-700   | 16        | 14      | 51190 | 2840-7600-205 | 2         | 78      |
| 51190 | 1414-2311-800   | 8         | 24      | 51190 | 2840-7600-205 | 4         | 21      |
| 51190 | 1414-2314-000   | 11        | 1       | 51190 | 2840-7600-208 | 2         | 80      |
| 51190 | 1414-2337-600   | 10        | 6       | 51190 | 2840-7600-208 | 4         | 19      |
| 51190 | 1414-2337-700   | 10        | 19      | 51190 | 2840-7600-219 | 2         | 90      |
| 51190 | 1414-2373-500   | 14        | 6       | 51190 | 2850-7601-301 | 8         | 40      |
| 51190 | 1414-2379-100   | 16        | 8       | 51190 | 2850-7601-301 | 10        | 30      |
| 51190 | 1415-2314-801   | 7         | 3       | 51190 | 2850-7601-301 | 11        | 14      |
| 51190 | 1415-2314-802   | 7         | 5       | 51190 | 2850-7617-400 | 2         | 46      |
| 51190 | 1415-2344-200   | 2         | 51      | 51190 | 2901-7624-600 | 8         | 18      |

SECTION IV  
 NATIONAL STOCK NUMBER AND PART NUMBER INDEX

TM11-6625-3016-24P

| FSCM  | PART NUMBER    | FIGURE NO | ITEM NO | FSCM  | PART NUMBER   | FIGURE NO | ITEM NO |
|-------|----------------|-----------|---------|-------|---------------|-----------|---------|
| 81349 | 3RP1A          | 11        | 31      | 51190 | 7005-2338-001 | 2         | 5       |
| 74868 | 31-759         | 3         | 11      | 51190 | 7005-2349-201 | 2         | 59      |
| 51190 | 3107-2354-500  | 10        | 15      | 51190 | 7005-2363-701 | 2         | 39      |
| 51190 | 3107-2365-300  | 11        | 29      | 51190 | 7005-2372-500 | 2         | 37      |
| 51190 | 3107-2380-600  | 16        | 12      | 51190 | 7005-2373-300 | 2         | 19      |
| 71785 | 4-170          | 8         | 26      | 51190 | 7005-2373-700 | 2         | 1       |
| 19505 | 4-70-36        | 3         | 17      | 51190 | 7005-2374-000 | 2         | 6       |
|       |                |           |         | 51190 | 7005-2375-300 | 2         | 84      |
| 51190 | 4503-2335-500  | 2         | 89      | 51190 | 7005-2376-200 | 15        | 2       |
| 51190 | 4503-2342-600  | 2         | 56      | 51190 | 7005-2377-700 | 2         | 68      |
| 51190 | 4503-2373-600  | 14        | 13      | 51190 | 7005-2380-400 | 17        | 3       |
| 51190 | 4503-2376-300  | 2         | 28      | 51190 | 7006-2364-400 | 2         | 93      |
| 51190 | 4750-7616-800  | 4         | 11      | 51190 | 7007-2364-600 | 11        | 21      |
| 51190 | 4750-7617-100  | 4         | 7       | 51190 | 7007-2377-800 | 4         | 23      |
| 51190 | 4750-7617-800  | 4         | 6       | 51190 | 7010-2309-000 | 10        | 18      |
| 51190 | 4756-0000-010  | 4         | 2       | 51190 | 7010-2309-300 | 6         | 27      |
| 11237 | 5P6043A        | 12        | 1       | 51190 | 7010-2309-500 | 15        | 24      |
| 33095 | 51-708-001     | 10        | 26      | 51190 | 7010-2310-100 | 2         | 24      |
| 33095 | 51-712-001     | 14        | 11      | 51190 | 7010-2330-300 | 2         | 9A      |
| 33095 | 51-713-002     | 7         | 7       | 51190 | 7010-2334-900 | 10        | 16      |
| 81073 | 51CD30-01-1AJN | 4         | 1       | 51190 | 7010-2342-300 | 2         | 53      |
| 51190 | 5119-7618-100  | 4         | 22      | 51190 | 7010-2342-400 | 2         | 48      |
| 96214 | 539409-3       | 5         | 11      | 51190 | 7010-2348-200 | 15        | 5       |
| 96214 | 539409-3       | 10        | 29      | 51190 | 7010-2349-300 | 2         | 49      |
| 96214 | 539409-3       | 13        | 8       | 51190 | 7010-2351-300 | 2         | 31A     |
| 96214 | 539409-4       | 5         | 7       | 51190 | 7010-2354-900 | 2         | 58      |
| 96214 | 539409-4       | 8         | 38      | 51190 | 7010-2355-900 | 6         | 24      |
| 51190 | 5400-2378-500  | 10        | 7       | 51190 | 7010-2357-300 | 2         | 36      |
| 51190 | 5400-2378-600  | 10        | 11      | 51190 | 7010-2359-300 | 11        | 13      |
| 51190 | 5850-0000-010  | 6         | 5       | 51190 | 7010-2359-400 | 11        | 12      |
| 51190 | 5950-2323-400  | 2         | 29      | 51190 | 7010-2361-900 | 6         | 11      |
| 19505 | 60-9939-090    | 14        | 1       | 51190 | 7010-2362-400 | 11        | 4       |
| 51190 | 6041-2326-602  | 16        | 24      | 51190 | 7010-2362-500 | 11        | 30      |
| 51190 | 6042-2375-500  | 2         | 96      | 51190 | 7010-2367-201 | 2         | 54      |
| 51190 | 6042-2375-600  | 2         | 94      | 51190 | 7010-2368-400 | 7         | 4       |
| 51190 | 6042-2375-700  | 2         | 95      | 51190 | 7010-2368-600 | 6         | 8       |
| 51190 | 6042-2376-400  | 2         | 118     | 51190 | 7010-2372-100 | 2         | 34      |
| 51190 | 6042-2376-600  | 2         | 117     | 51190 | 7010-2372-400 | 2         | 38      |
| 51190 | 6046-2379-900  | 17        | 9       | 51190 | 7010-2373-100 | 2         | 45      |
| 51190 | 6050-0010-805  | 2         | 116     | 51190 | 7010-2374-600 | 2         | 66      |
| 51190 | 6050-0021-410  | 2         | 35      | 51190 | 7010-2375-200 | 2         | 81      |
| 51190 | 6050-0033-440  | 2         | 115     | 51190 | 7010-2376-100 | 15        | 23      |
| 51190 | 6050-0040-570  | 2         | 114     | 51190 | 7010-2380-300 | 17        | 1       |
| 51190 | 6050-0040-620  | 2         | 113     | 51190 | 7013-2329-700 | 2         | 8       |
| 51190 | 6050-0040-620  | 11        | 10      | 51190 | 7013-2343-300 | 2         | 62      |
| 51190 | 6050-0040-720  | 11        | 9       | 51190 | 7013-2366-700 | 11        | 20      |
| 51190 | 6050-0040-870  | 2         | 112     | 51190 | 7013-2366-800 | 11        | 27      |
| 51190 | 6050-0041-220  | 2         | 111     | 51190 | 7014-2355-400 | 2         | 57      |
| 51190 | 6050-0041-320  | 2         | 110     | 51190 | 7014-2362-000 | 6         | 10      |
| 51190 | 6050-0041-620  | 2         | 109     | 51190 | 7015-2309-700 | 2         | 7       |
| 51190 | 6050-0041-720  | 2         | 108     | 51190 | 7017-2321-900 | 15        | 1       |
| 51190 | 6050-0041-820  | 2         | 107     | 51190 | 7017-2346-200 | 2         | 30      |
| 51190 | 6050-0041-970  | 2         | 106     | 51190 | 7018-2340-200 | 2         | 21      |
| 51190 | 6050-0042-020  | 2         | 105     | 51190 | 7018-2359-100 | 2         | 9       |
| 51190 | 6050-0042-120  | 2         | 104     | 51190 | 7019-2342-901 | 1         | 1       |
| 51190 | 6050-0042-220  | 2         | 103     | 51190 | 7022-2360-200 | 2         | 47      |
| 51190 | 6050-0050-925  | 2         | 102     | 51190 | 7023-2338-400 | 8         | 11      |
| 51190 | 6050-0052-325  | 2         | 101     | 51190 | 7024-2322-500 | 6         | 21      |
| 51190 | 6050-0060-745  | 2         | 100     | 51190 | 7025-2356-000 | 6         | 23      |
| 51190 | 6050-0070-890  | 13        | 7       | 51190 | 7026-2321-700 | 6         | 26      |
| 51190 | 6050-0320-620  | 2         | 99      | 51190 | 7027-2348-300 | 15        | 4       |
| 51190 | 6050-0320-720  | 2         | 98      | 51190 | 7028-2366-900 | 11        | 16      |
| 51190 | 6050-9900-100  | 2         | 97      | 51190 | 7029-2362-600 | 2         | 87      |
| 51190 | 6500-2353-400  | 2         | 65      | 51190 | 7030-2363-200 | 11        | 8       |
| 51190 | 6500-2379-400  | 17        | 8       | 51190 | 7030-2363-300 | 11        | 22      |
| 51190 | 6500-2380-800  | 16        | 26      | 51190 | 7048-2351-600 | 2         | 31      |
| 30463 | 6620           | 11        | 32      | 09353 | 7101SYZQ      | 4         | 9       |
| 00779 | 66504-3        | 5         | 4       | 39428 | 7122H13       | 16        | 15      |
| 00779 | 66504-3        | 8         | 37      | 09353 | 7207J12Q3     | 4         | 16      |
| 00779 | 66505-9        | 5         | 5       | 09353 | 7211SYZQ      | 4         | 12      |
| 18342 | 66506-3        | 5         | 13      | 09353 | 7213SYZQ      | 4         | 18      |
| 18342 | 66506-3        | 13        | 9       | 09353 | 7301SYZQE     | 4         | 4       |
| 00779 | 66506-9        | 5         | 2       | 09353 | 7303SYZQ      | 13        | 12      |
| 00779 | 66506-9        | 10        | 28      | 11532 | 732-12        | 14        | 5       |
| 18342 | 66507-3        | 5         | 14      | 79963 | 75            | 4         | 15      |
| 18342 | 66507-3        | 13        | 10      | 94222 | 85-12-160-16  | 16        | 7       |
| 25706 | 670-1/4        | 16        | 18      | 94222 | 85-34-101-20  | 16        | 10      |
| 92966 | 680            | 3         | 7       | 94222 | 85-47-101-15  | 16        | 11      |
| 51190 | 7003-2364-101  | 1         | 2       | 00629 | 8578          | 6         | 6       |
| 51190 | 7003-2380-000  | 16        | 9       | 32640 | 93GB3-4-X-65  | 10        | 21      |

SECTION IV  
NATIONAL STOCK NUMBER AND PART NUMBER INDEX

TM11-6625-3016-24P

| FSCM  | PART NUMBER | FIGURE<br>NO | ITEM<br>NO | FSCM  | PART NUMBER | FIGURE<br>NO | ITEM<br>NO |
|-------|-------------|--------------|------------|-------|-------------|--------------|------------|
| 20208 | 9380        | 16           | 25         | 18876 | 9986606     | 5            | 9          |

LATEST NATIONAL STOCK NUMBER AND PART NUMBER ASSIGNMENTS

| FSCM  | PART NUMBER   | FIGURE<br>NO | ITEM<br>NO | FSCM | PART NUMBER | FIGURE<br>NO | ITEM<br>NO |
|-------|---------------|--------------|------------|------|-------------|--------------|------------|
| 51190 | 7005-7624-500 | 2            | 3          |      |             |              |            |
| 51190 | 7010-2374-900 | 2            | 119        |      |             |              |            |

RECOMMENDED CHANGES TO EQUIPMENT TECHNICAL PUBLICATIONS



THEN... JOT DOWN THE DOPE ABOUT IT ON THIS FORM. CAREFULLY TEAR IT OUT, FOLD IT AND DROP IT IN THE MAIL!

SOMETHING WRONG WITH THIS PUBLICATION?

FROM: (PRINT YOUR UNIT'S COMPLETE ADDRESS)  
 Commander  
 Stateside Army Depot  
 ATTN: AMSTA-US  
 Stateside, N.J. 07703

DATE SENT  
 10 July 1975

|  |                               |  |
|--|-------------------------------|--|
| PUBLICATION NUMBER<br>TM 11-5840-340-20P | PUBLICATION DATE<br>23 Jan 78 | PUBLICATION TITLE<br>Radar Set AN/PRC-76 |
|--|-------------------------------|--|

| BE EXACT... PIN-POINT WHERE IT IS |            |            |           | IN THIS SPACE TELL WHAT IS WRONG AND WHAT SHOULD BE DONE ABOUT IT:  |
|-----------------------------------|------------|------------|-----------|---|
| PAGE NO.                          | PARA-GRAPH | FIGURE NO. | TABLE NO. |   |
| 33                                |            |            |           | For item 2, change the NSN to read: 5835-00-134-9186.<br>Reason: Accuracy.  |
| 44                                |            | 19         |           | Identify the cover on the junction box (item no. 5).<br>Reason: It is a separate item and is not called out on figure 19. |
| 45                                |            |            |           | Add the cover of the junction box as an item in the listing for figure 19.<br>Reason: Same as above                       |

EXAMPLE

PRINTED NAME, GRADE OR TITLE, AND TELEPHONE NUMBER  
 SSG I. M. DeSpirit of 999-1776

SIGN HERE





RECOMMENDED CHANGES TO EQUIPMENT TECHNICAL PUBLICATIONS



THEN...JOT DOWN THE DOPE ABOUT IT ON THIS FORM. CAREFULLY TEAR IT OUT, FOLD IT AND DROP IT IN THE MAIL.

SOMETHING WRONG WITH THIS PUBLICATION?

FROM: (PRINT YOUR UNIT'S COMPLETE ADDRESS)

DATE SENT

PUBLICATION NUMBER

TM 11-6625-3016-24P

PUBLICATION DATE

PUBLICATION TITLE Test Set, Radio

AN/GRM-114

BE EXACT PIN-POINT WHERE IT IS

PAGE NO.

PARA-GRAPH

FIGURE NO.

TABLE NO.

IN THIS SPACE TELL WHAT IS WRONG AND WHAT SHOULD BE DONE ABOUT IT:

TEAR ALONG PERFORATED LINE

PRINTED NAME GRADE OR TITLE AND TELEPHONE NUMBER

SIGN HERE

DA FORM 2028-2  
1 JUL 79

PREVIOUS EDITIONS ARE OBSOLETE

P.S.--IF YOUR OUTFIT WANTS TO KNOW ABOUT YOUR RECOMMENDATION MAKE A CARBON COPY OF THIS AND GIVE IT TO YOUR HEADQUARTERS.

FILL IN YOUR  
UNIT'S ADDRESS

FOLD BACK

DEPARTMENT OF THE ARMY

\_\_\_\_\_  
\_\_\_\_\_  
\_\_\_\_\_

OFFICIAL BUSINESS  
PENALTY FOR PRIVATE USE \$300

POSTAGE AND FEES PAID  
DEPARTMENT OF THE ARMY  
DOD 314



Commander  
US Army Communications-Electronics Command  
and Fort Monmouth  
ATTN: DRSEL-ME-MP  
Fort Monmouth, New Jersey 07703

1989 RELEASE UNDER E.O. 14176

RECOMMENDED CHANGES TO EQUIPMENT TECHNICAL PUBLICATIONS



THEN...JOT DOWN THE DOPE ABOUT IT ON THIS FORM. CAREFULLY TEAR IT OUT, FOLD IT AND DROP IT IN THE MAIL.

SOMETHING WRONG WITH THIS PUBLICATION?

FROM: (PRINT YOUR UNIT'S COMPLETE ADDRESS)

DATE SENT

PUBLICATION NUMBER

TM 11-6625-3016-24P

PUBLICATION DATE

PUBLICATION TITLE Test Set, Radio

AN/GRM-114

BE EXACT PIN-POINT WHERE IT IS

PAGE NO.

PARA-GRAPH

FIGURE NO.

TABLE NO.

IN THIS SPACE TELL WHAT IS WRONG AND WHAT SHOULD BE DONE ABOUT IT:

TEAR ALONG PERFORATED LINE

PRINTED NAME GRADE OR TITLE AND TELEPHONE NUMBER

SIGN HERE

DA FORM 2028-2  
1 JUL 79

PREVIOUS EDITIONS ARE OBSOLETE

P.S.--IF YOUR OUTFIT WANTS TO KNOW ABOUT YOUR RECOMMENDATION MAKE A CARBON COPY OF THIS AND GIVE IT TO YOUR HEADQUARTERS.

FILL IN YOUR  
UNIT'S ADDRESS

FOLD BACK

DEPARTMENT OF THE ARMY

\_\_\_\_\_  
\_\_\_\_\_

OFFICIAL BUSINESS  
PENALTY FOR PRIVATE USE \$300

POSTAGE AND FEES PAID  
DEPARTMENT OF THE ARMY  
DOD 314



TEAR ALONG PERFORATED LINE

Commander  
US Army Communications-Electronics Command  
and Fort Monmouth  
ATTN: DRSEL-ME-MP  
Fort Monmouth, New Jersey 07703

RECOMMENDED CHANGES TO EQUIPMENT TECHNICAL PUBLICATIONS



THEN...JOT DOWN THE DOPE ABOUT IT ON THIS FORM. CAREFULLY TEAR IT OUT, FOLD IT AND DROP IT IN THE MAIL.

SOMETHING WRONG WITH THIS PUBLICATION?

FROM: (PRINT YOUR UNIT'S COMPLETE ADDRESS)

DATE SENT

PUBLICATION NUMBER

TM 11-6625-3016-24P

PUBLICATION DATE

PUBLICATION TITLE Test Set, Radio

AN/GRM-114

BE EXACT PIN-POINT WHERE IT IS

PAGE NO.

PARA-GRAPH

FIGURE NO.

TABLE NO.

IN THIS SPACE TELL WHAT IS WRONG AND WHAT SHOULD BE DONE ABOUT IT:

TEAR ALONG PERFORATED LINE

PRINTED NAME GRADE OR TITLE AND TELEPHONE NUMBER

SIGN HERE

DA FORM 2028-2  
1 JUL 79

PREVIOUS EDITIONS ARE OBSOLETE

P.S.--IF YOUR OUTFIT WANTS TO KNOW ABOUT YOUR RECOMMENDATION MAKE A CARBON COPY OF THIS AND GIVE IT TO YOUR HEADQUARTERS.

FILL IN YOUR  
UNIT'S ADDRESS

FOLD BACK

DEPARTMENT OF THE ARMY

\_\_\_\_\_  
\_\_\_\_\_

OFFICIAL BUSINESS  
PENALTY FOR PRIVATE USE \$300

POSTAGE AND FEES PAID  
DEPARTMENT OF THE ARMY  
DOD 314



Commander  
US Army Communications-Electronics Command  
and Fort Monmouth  
ATTN: DRSEL-ME-MP  
Fort Monmouth, New Jersey 07703

**By Order of the Secretary of the Army:**

**Official:**

**ROBERT M. JOYCE**  
*Major General, United States Army*  
*The Adjutant General*

**E. C. MEYER**  
*General, United States Army*  
*Chief of Staff*

**DISTRIBUTION:**

To be distributed in accordance with DA Form 12-51, Direct Support and General Support Maintenance requirements for AN/VRC-12.

